

FRONT ELEVATION

NOTE: STOOPS, STEPS, APRON AND DRIVE BY OWNER

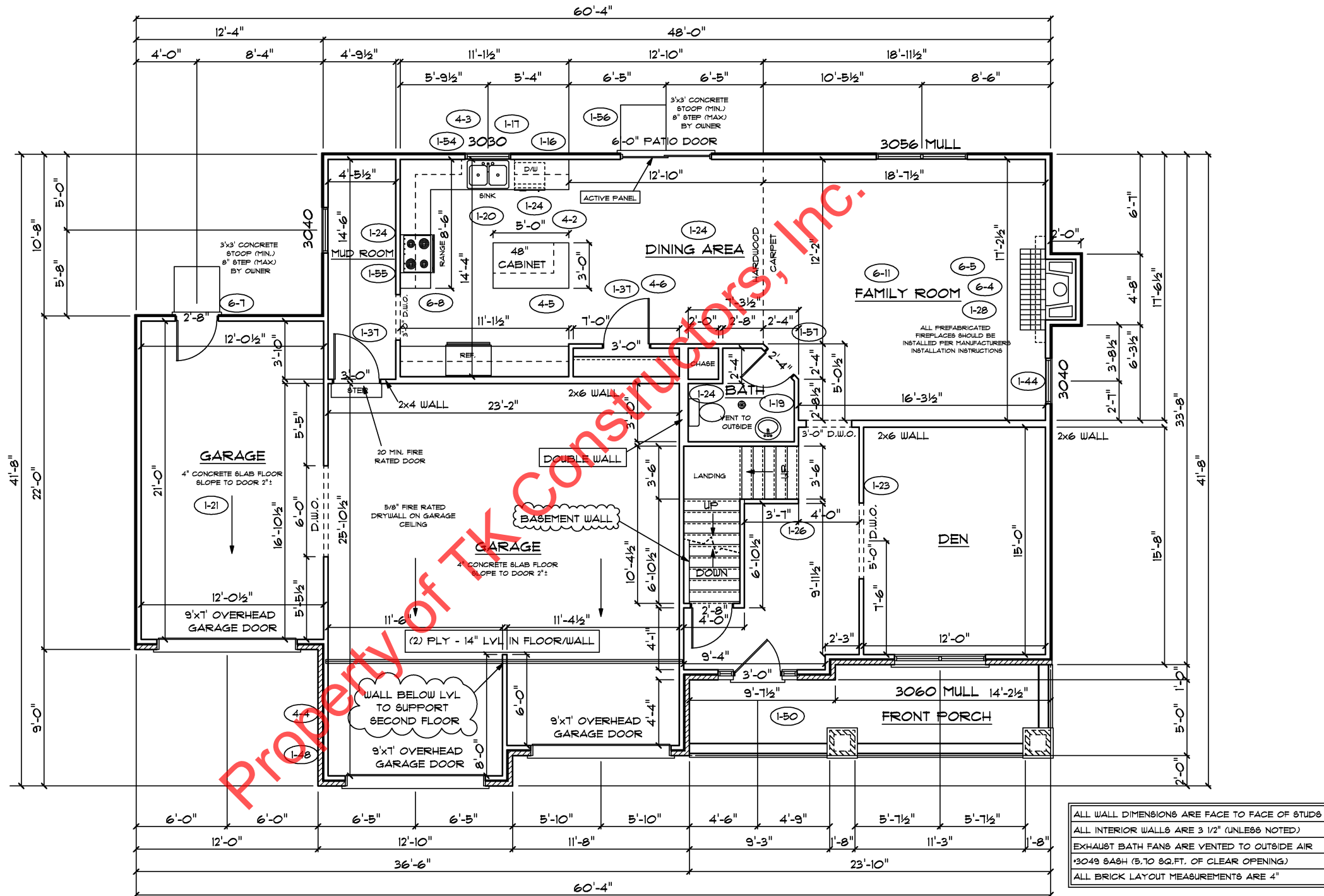


FIRST FLOOR PLAN

| ANDERSEN WINDOW SCHEDULE<br>- 200 SERIES - (1-46)  |           |
|--|-----------|
| ANDERSEN MODEL NO.   | R.O. SIZE |
| 3030   | 36" x 36" |
| 3040   | 36" x 48" |
| 3049*  | 36" x 57" |
| 3056*  | 36" x 66" |
| 3060*  | 36" x 72" |
| 3049 MULL*   | 73" x 57" |
| 3056 MULL*   | 73" x 66" |
| 3060 MULL*   | 73" x 72" |
| ANDERSEN SLIDING DOOR<br>R.O. 72 3/4" x 82 7/8"  |           |
| 3'-0" FRONT DOOR<br>R.O. 38 3/8" x 82 1/2"   |           |
| 3'-0" FRONT DOOR WITH (1) SIDELITE<br>R.O. 51 7/8" x 82 1/2"                                 |           |
| 3'-0" FRONT DOOR WITH (2) SIDELITES<br>R.O. 65 3/8" x 82 1/2"                                |           |
| R.O. FOR BI-FOLD DOORS USING DRYWALL<br>JAMB FACING = 1 1/4" + DOOR SIZE x (81 1/2")         |           |
| R.O. FOR BYPASS DOORS USING DRYWALL<br>JAMB FACING MAKE SAME AS BOTH DOORS<br>ADDED TOGETHER |           |
| ALL INTERIOR DOORS<br>SIZE + 2" TO WIDTH x 82 1/2" HIGH                                      |           |
| R.O. POCKET DOOR<br>(2x DOOR WIDTH + 1") x 85" HIGH  |           |

\* - DENOTES OPENING MEETS  
EGRESS REQUIREMENTS

| 9'-0" FIRST FLOOR<br>CEILING HEIGHT (1-49) |                                      |
|--|--------------------------------------|
| INCLUDES:                                  |                                      |
| 1.   | 4 1/4" BASEBOARDS IN LIEU OF 3 1/4"  |
| 2.   | 3060 WINDOWS IN LIEU OF 3056 WINDOWS |
| 3.   | 3056 WINDOWS IN LIEU OF 3049 WINDOWS |
| 4.   | DRYWALL WRAPPED OPENINGS 12" TALLER  |
| 5.   | 30" KITCHEN CABINETS STANDARD        |
| 6.   | 16'x7' GARAGE DOOR STANDARD          |



ALL WALL DIMENSIONS ARE FACE TO FACE OF STUDS  
 ALL INTERIOR WALLS ARE 3 1/2" (UNLESS NOTED)  
 EXHAUST BATH FANS ARE VENTED TO OUTSIDE AIR  
 \*3049 SASH (5.70 SQ.FT. OF CLEAR OPENING)  
 ALL BRICK LAYOUT MEASUREMENTS ARE 4"

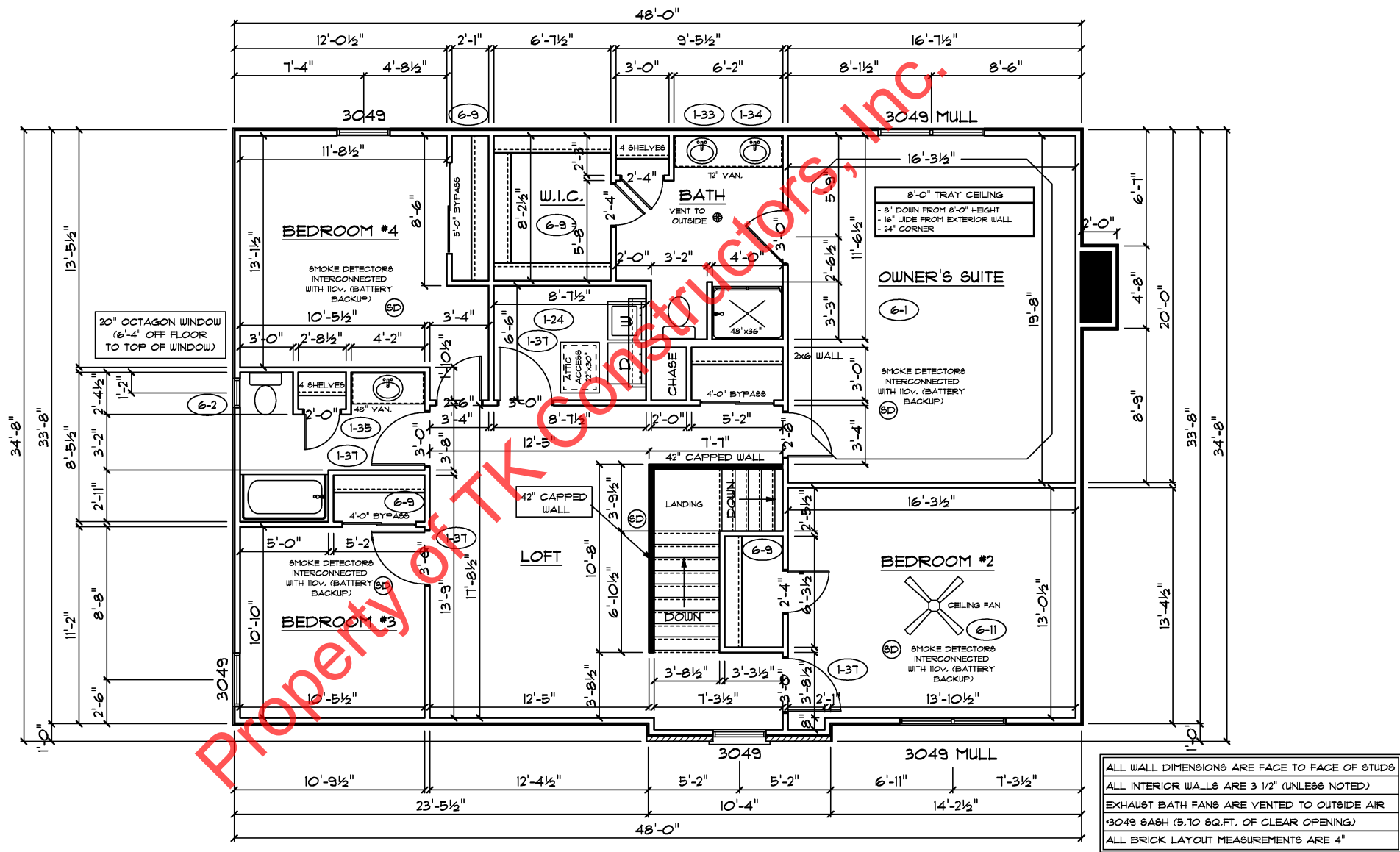


SECOND FLOOR PLAN

|                     |       |
|---------------------|-------|
| FIRST FLOOR SQ.FT.  | 1,130 |
| SECOND FLOOR SQ.FT. | 1,625 |
| TOTAL LIVING SQ.FT. | 2,815 |
| GARAGE              | 876   |
| TOTAL SQ.FT.        | 3,691 |
| EXCLUDING PORCH     | 133   |

| ANDERSEN WINDOW SCHEDULE<br>- 200 SERIES -   |           |
|--|-----------|
| ANDERSEN MODEL NO.   | R.O. SIZE |
| 3030   | 36" x 36" |
| 3040   | 36" x 48" |
| 3049*  | 36" x 51" |
| 3056*  | 36" x 66" |
| 3060*  | 36" x 72" |
| 3049 MULL*   | 73" x 51" |
| 3056 MULL*   | 73" x 66" |
| 3060 MULL*   | 73" x 72" |
| ANDERSEN SLIDING DOOR<br>R.O. T2 3/4" x 82 7/8"  |           |
| 3'-0" FRONT DOOR<br>R.O. 38 3/8" x 82 1/2"   |           |
| 3'-0" FRONT DOOR WITH (1) SIDELITE<br>R.O. 51 7/8" x 82 1/2"                                 |           |
| 3'-0" FRONT DOOR WITH (2) SIDELITES<br>R.O. 65 3/8" x 82 1/2"                                |           |
| R.O. FOR BI-FOLD DOORS USING DRYWALL<br>JAMB FACING = 1 1/4" + DOOR SIZE x (81 1/2")         |           |
| R.O. FOR BYPASS DOORS USING DRYWALL<br>JAMB FACING MAKE SAME AS BOTH DOORS<br>ADDED TOGETHER |           |
| ALL INTERIOR DOORS<br>SIZE + 2" TO WIDTH x 82 1/2" HIGH                                      |           |
| R.O. POCKET DOOR<br>(2x DOOR WIDTH + 1") x 85" HIGH  |           |

\* - DENOTES OPENING MEETS  
EGRESS REQUIREMENTS



ALL WALL DIMENSIONS ARE FACE TO FACE OF STUDS  
 ALL INTERIOR WALLS ARE 3 1/2" (UNLESS NOTED)  
 EXHAUST BATH FANS ARE VENTED TO OUTSIDE AIR  
 \*3049 SASH (5.70 SQ.FT. OF CLEAR OPENING)  
 ALL BRICK LAYOUT MEASUREMENTS ARE 4"

