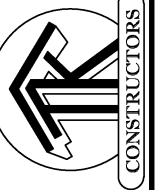


FRONT ELEVATION

NOTE: STOOPS, STEPS, APRON AND DRIVE BY OWNER

GRADE AWAY FROM FOUNDATION BY OWNER

GRADE AWAY FROM FOUNDATION BY OWNER



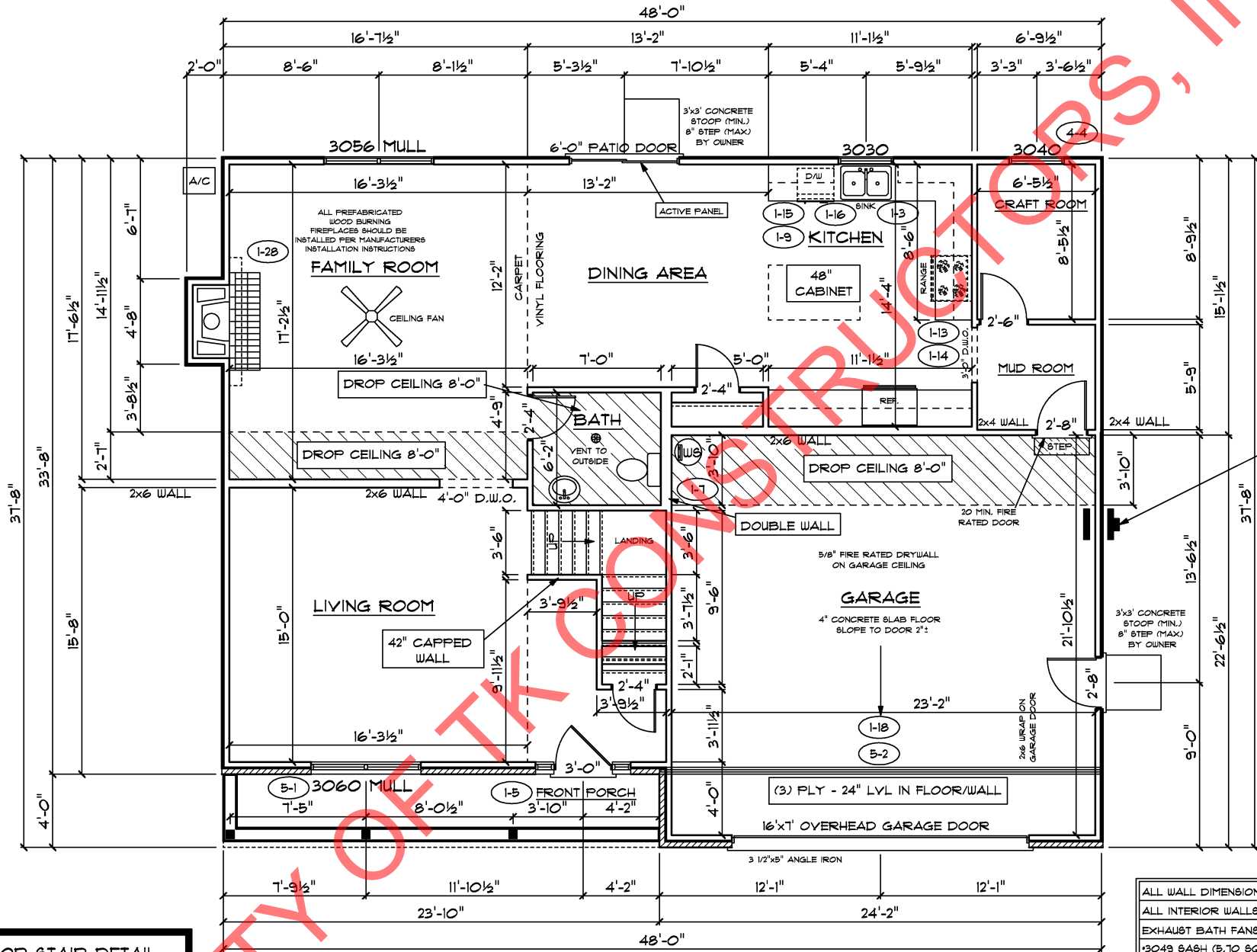
FIRST FLOOR PLAN

ANDERSEN WINDOW SCHEDULE
- 200 SERIES -

ANDERSEN MODEL NO.	R.O. SIZE
3030	36" x 36"
3040	36" x 48"
3049*	36" x 51"
3056*	36" x 66"
3060*	36" x 72"
3049 MULL*	73" x 51"
3056 MULL*	73" x 66"
3060 MULL*	73" x 72"

ANDERSEN SLIDING DOOR R.O. 72 3/4" x 82 1/8"
3'-0" FRONT DOOR R.O. 38 3/8" x 82 1/2"
3'-0" FRONT DOOR WITH (1) SIDELITE R.O. 51 1/8" x 82 1/2"
3'-0" FRONT DOOR WITH (2) SIDELITES R.O. 65 3/8" x 82 1/2"
R.O. FOR BI-FOLD DOORS USING DRYWALL JAMB FACING = 1 1/4" + DOOR SIZE x (81 1/2")
R.O. FOR BYPASS DOORS USING DRYWALL JAMB FACING MAKE SAME AS BOTH DOORS ADDED TOGETHER
ALL INTERIOR DOORS SIZE + 2" TO WIDTH x 82 1/2" HIGH
R.O. POCKET DOOR (2x DOOR WIDTH + 1") x 85" HIGH

* - DENOTES OPENING MEETS
EGRESS REQUIREMENTS



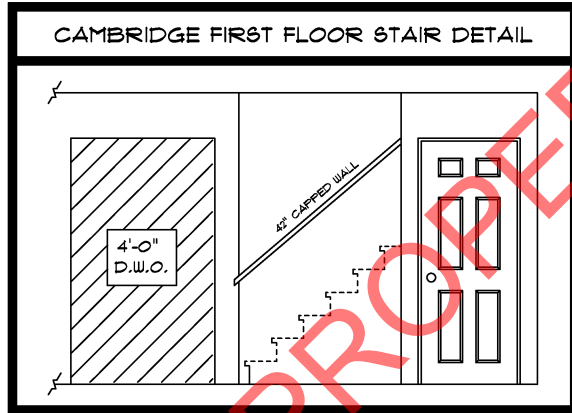
ELECTRIC

9'-0" FIRST FLOOR
CEILING HEIGHT (1-23)

INCLUDES:

- 4 1/4" BASEBOARDS IN LIEU OF 3 1/4"
- 3060 WINDOWS IN LIEU OF 3056 WINDOWS
- 3056 WINDOWS IN LIEU OF 3049 WINDOWS
- DRYWALL WRAPPED OPENINGS 12" TALLER
- 30" KITCHEN CABINETS STANDARD
- 16'x1' GARAGE DOOR STANDARD

ALL WALL DIMENSIONS ARE FACE TO FACE OF STUDS
ALL INTERIOR WALLS ARE 3 1/2" (UNLESS NOTED)
EXHAUST BATH FANS ARE VENTED TO OUTSIDE AIR
3049 BASH (5.70 SQ.FT. OF CLEAR OPENING)
ALL BRICK LAYOUT MEASUREMENTS ARE 4"



SECOND FLOOR PLAN

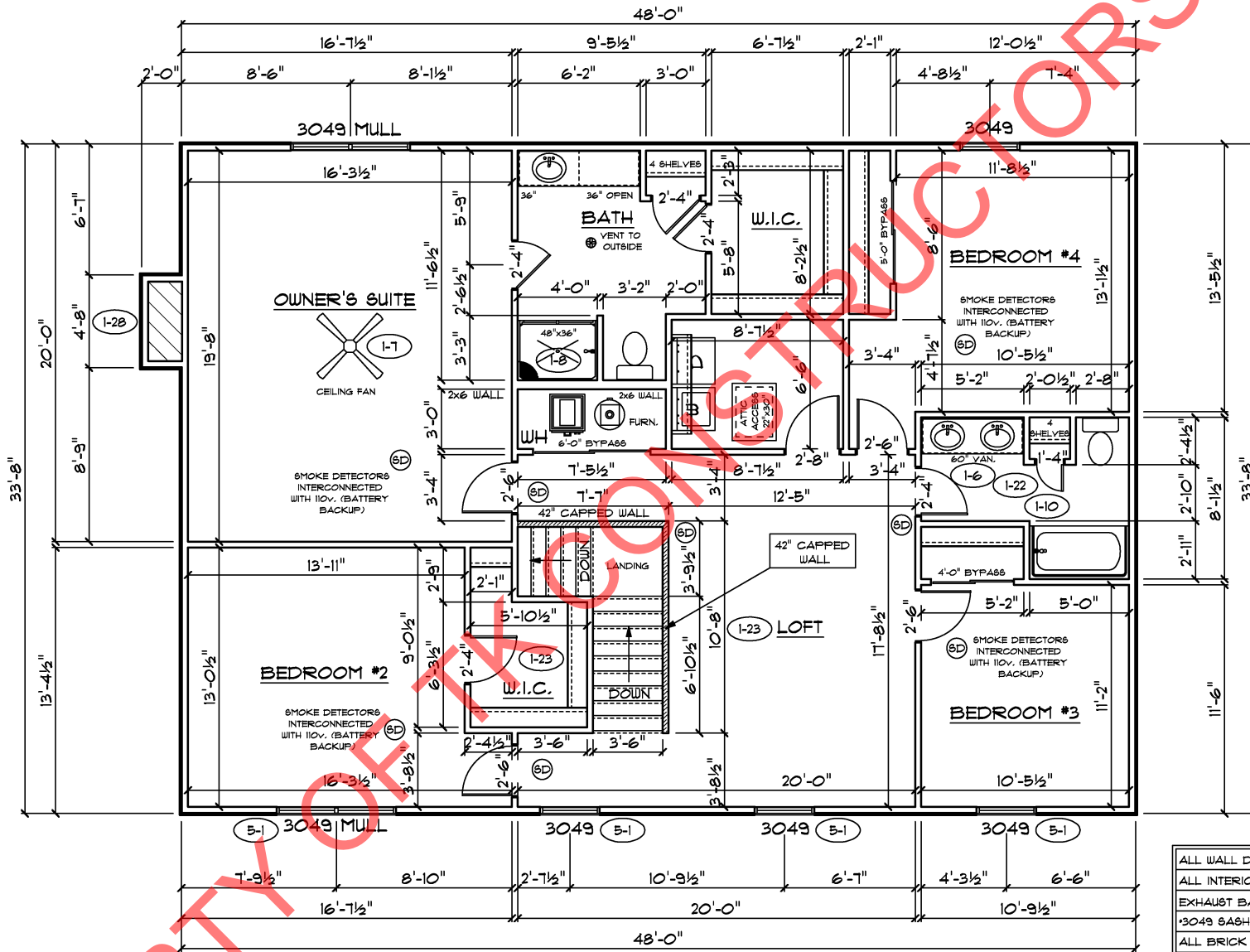
FIRST FLOOR SQ.FT.	1,180
SECOND FLOOR SQ.FT.	1,616
TOTAL LIVING SQ.FT.	2,796
GARAGE	532
TOTAL SQ.FT.	3,328
EXCLUDING PORCH	95

**ANDERSEN WINDOW SCHEDULE
- 200 SERIES -**

ANDERSEN MODEL NO.	R.O. SIZE
3030	36" x 36"
3040	36" x 48"
3049*	36" x 57"
3056*	36" x 66"
3060*	36" x 72"
3049 MULL*	73" x 57"
3056 MULL*	73" x 66"
3060 MULL*	73" x 72"

ANDERSEN SLIDING DOOR R.O. 72 3/4" x 82 7/8"
3'-0" FRONT DOOR R.O. 38 3/8" x 82 1/2"
3'-0" FRONT DOOR WITH (1) SIDELITE R.O. 51 7/8" x 82 1/2"
3'-0" FRONT DOOR WITH (2) SIDELITES R.O. 65 3/8" x 82 1/2"
R.O. FOR BI-FOLD DOORS USING DRYWALL JAMB FACING = 1 1/4" + DOOR SIZE x (81 1/2")
R.O. FOR BYPASS DOORS USING DRYWALL JAMB FACING MAKE SAME AS BOTH DOORS ADDED TOGETHER
ALL INTERIOR DOORS SIZE + 2" TO WIDTH x 82 1/2" HIGH
R.O. POCKET DOOR (2x DOOR WIDTH + 1") x 85" HIGH

* - DENOTES OPENING MEETS
EGRESS REQUIREMENTS



ALL WALL DIMENSIONS ARE FACE TO FACE OF STUDS
ALL INTERIOR WALLS ARE 3 1/2" (UNLESS NOTED)
EXHAUST BATH FANS ARE VENTED TO OUTSIDE AIR
3049 BASH (5.10 SQ.FT. OF CLEAR OPENING)
ALL BRICK LAYOUT MEASUREMENTS ARE 4"

