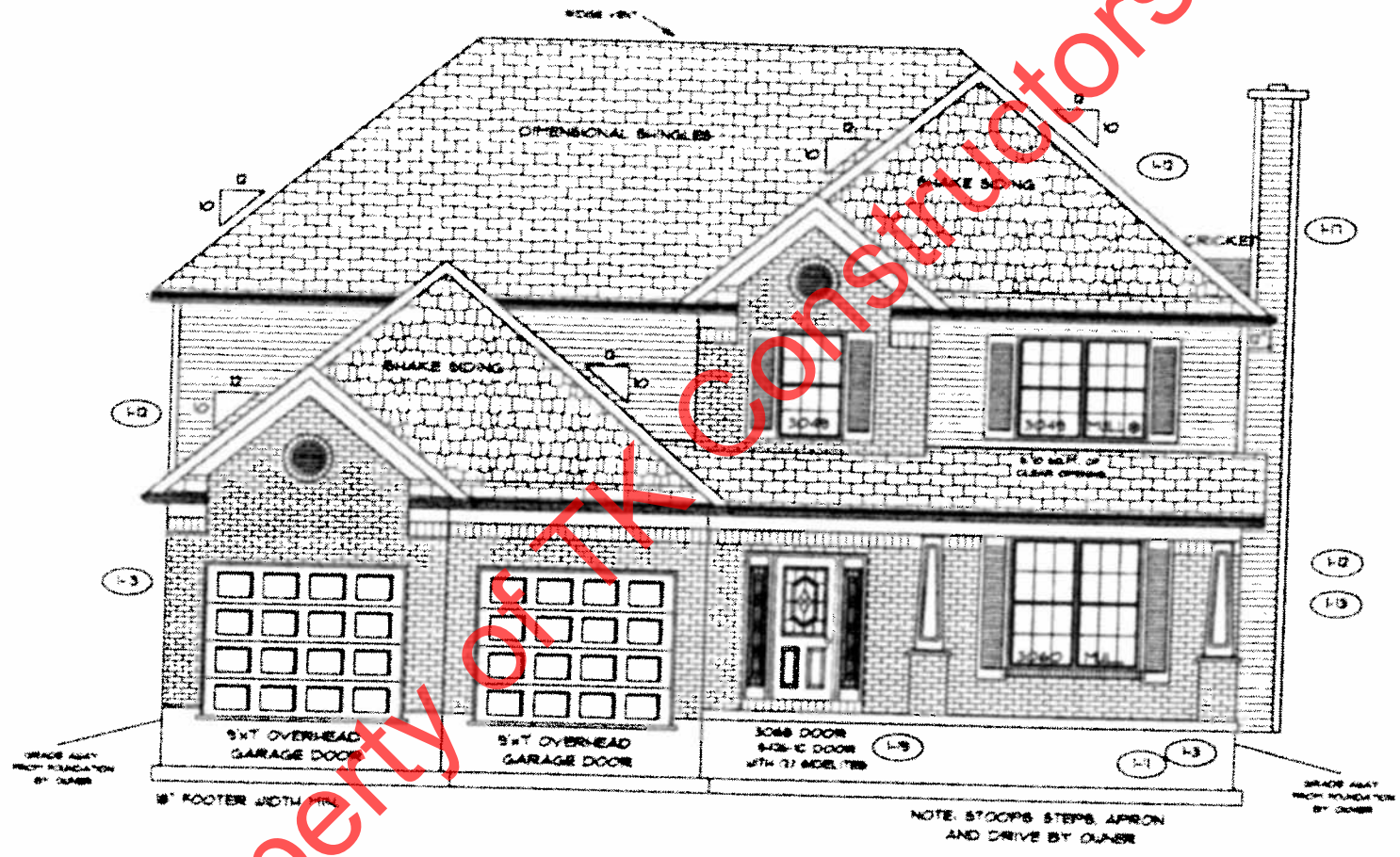


MARKED UP 5-16-14



TK Constructors, Inc.

PAGE NO. 10

ADDENDUM 1
VER: 06.20 AM
DRAWING BY: RLC
1/8" = 1'



DATE: April 29, 2014

JOB NO: 210-14-0432

TK CONSTRUCTORS
CAMBRIDGE ELITE

CRS/MS

FIRST FLOOR PLAN

ANDERSEN WINDOW SCHEDULE
- 200 SERIES -

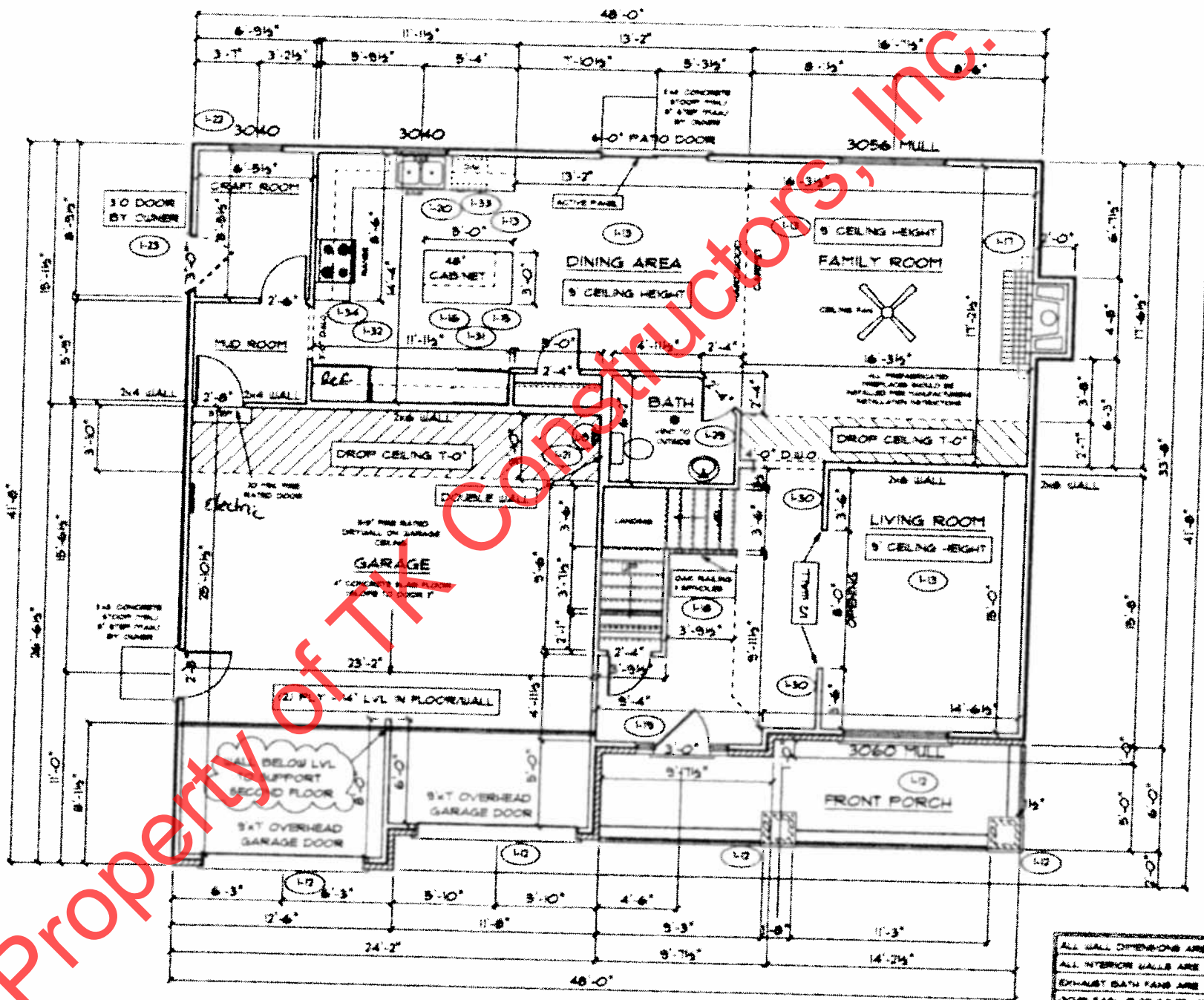
ANDERSEN MODEL NO.	R.O. SIZE
3030	36" x 36"
3040	36" x 48"
3049	36" x 51"
3056	36" x 66"
3060	36" x 72"
3049 MULL.	13" x 51"
3056 MULL.	13" x 66"
3060 MULL.	13" x 72"
ANDERSEN SLIDING DOOR R.O. 72 3/4" x 82 1/8"	
3'-0" FRONT DOOR R.O. 36 3/8" x 82 1/2"	
3'-0" FRONT DOOR WITH (1) SIDELITE R.O. 61 7/8" x 82 1/2"	
3'-0" FRONT DOOR WITH (2) SIDELITES R.O. 68 3/8" x 82 1/2"	
R.O. FOR BI-FOLD DOORS USING DRYWALL JAMB FACING = 1 1/4" - DOOR SIZE x (81 1/2")	
R.O. FOR BYPASS DOORS USING DRYWALL JAMB FACING MAKE SAME AS BOTH DOORS ADDED TOGETHER	
ALL INTERIOR DOORS SIZE = 3" TO WIDTH x 82 1/2" HIGH	
R.O. POCKET DOOR (2x DOOR WIDTH + 7") x 88" HIGH	

.. DENOTES OPENING MEETS EGRESS REQUIREMENTS

9'-0" FIRST FLOOR CEILING HEIGHT

INCLUDES:

1.	4 1/4" BASEBOARDS IN LIEU OF 3 1/4"
2.	3060 WINDOWS IN LIEU OF 3056 WINDOWS
3.	3056 WINDOWS IN LIEU OF 3049 WINDOWS
4.	DRYWALL WRAPPED OPENINGS 2" TALLER
5.	47" KITCHEN CABINETS
6.	2 - 8'x7' GARAGE DOORS



ALL WALL DIMENSIONS ARE FACE TO FACE OF STUD
ALL INTERIOR WALLS ARE 3/4\"/>

Paint spindles, cap + skirt board
stair knob

Property of TK Constructors, Inc.



TK CONSTRUCTORS
CAMBRIDGE ELITE

CKS/m/s

SECOND FLOOR PLAN

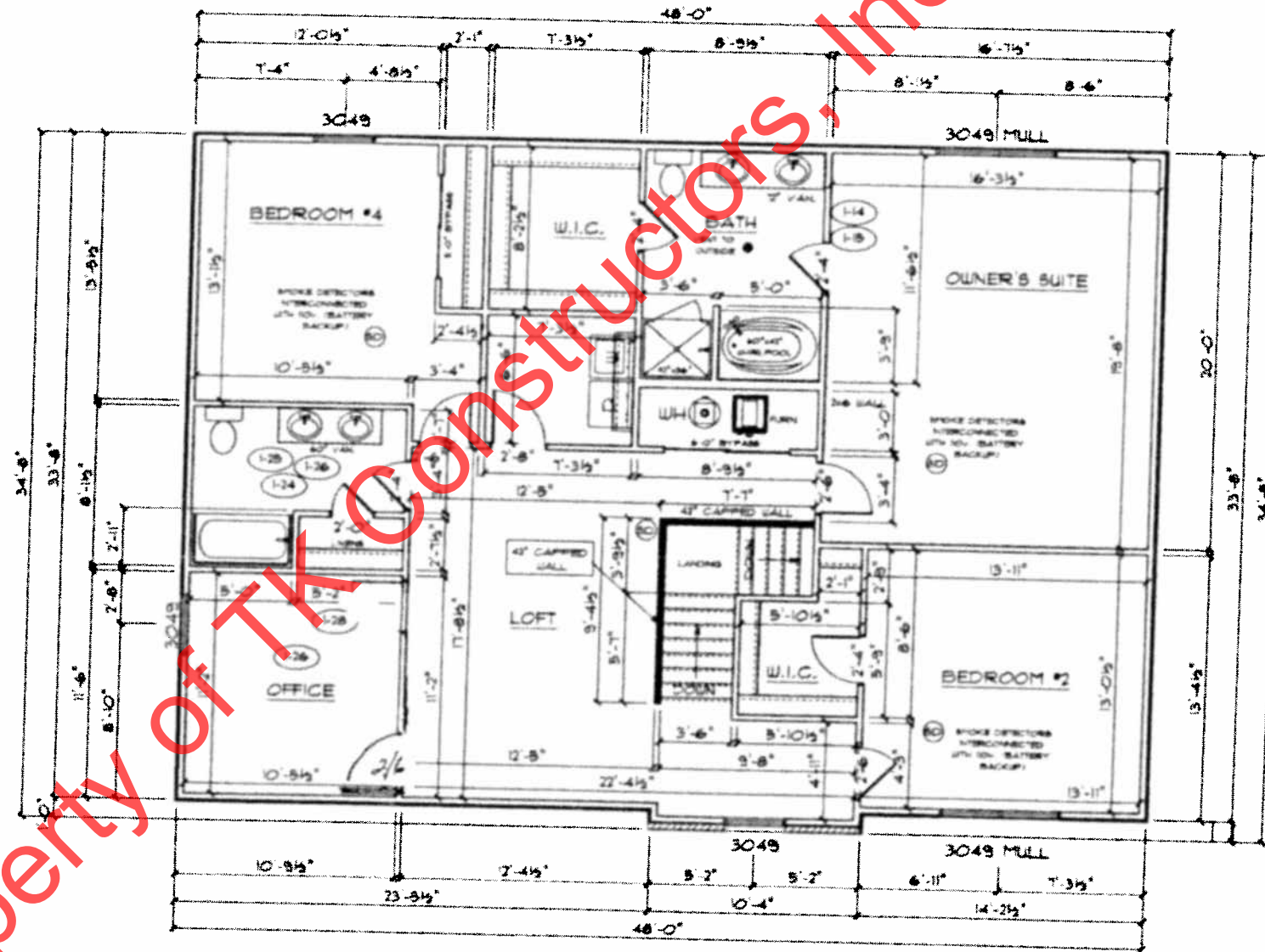
FIRST FLOOR SQ.FT.	1,190
SECOND FLOOR SQ.FT.	1,625
TOTAL LIVING SQ.FT.	2,815
GARAGE	605
TOTAL SQ.FT.	3,420
EXCLUDING PORCH	133

ANDERSEN WINDOW SCHEDULE
- 200 SERIES -

ANDERSEN MODEL NO.	R.O. SIZE
3030	36" x 36"
3040	36" x 48"
3049	36" x 51"
3056	36" x 66"
3060	36" x 72"
3049 MULL	13" x 51"
3056 MULL	13" x 66"
3060 MULL	13" x 72"

ANDERSEN SLIDING DOOR R.O. 72 3/4" x 82 1/8"
3'-0" FRONT DOOR R.O. 36 3/8" x 82 1/2"
3'-0" FRONT DOOR WITH (1) SIDELITE R.O. 51 1/8" x 82 1/2"
3'-0" FRONT DOOR WITH (2) SIDELITES R.O. 65 3/8" x 82 1/2"
R.O. FOR BI-FOLD DOORS USING DRYWALL JAMB FACING = 1 1/4" + DOOR SIZE + (8) 1/2"
R.O. FOR BY-PASS DOORS USING DRYWALL JAMB FACING MAKE SAME AS BOTH DOORS ADDED TOGETHER
ALL INTERIOR DOORS SIZE = 2" TO WIDTH + 82 1/2" HIGH
R.O. POCKET DOOR (2x DOOR WIDTH + 7) x 82" HIGH

○ - DENOTES OPENING MEETS
EGRESS REQUIREMENTS



ALL WALL DIMENSIONS ARE FACE TO FACE OF STUDS
ALL INTERIOR WALLS ARE 3 1/2" (UNLESS NOTED)
EXHAUST BATH FANS ARE VENTED TO OUTSIDE AIR
3049 BATH IS TO 80 FT. OF CLEAR OPENING
ALL BRICK LAY OUT MEASUREMENTS ARE 4"

Property of TK Constructors, Inc.



TK CONSTRUCTORS
CAMBRIDGE ELITE

CKS / MS