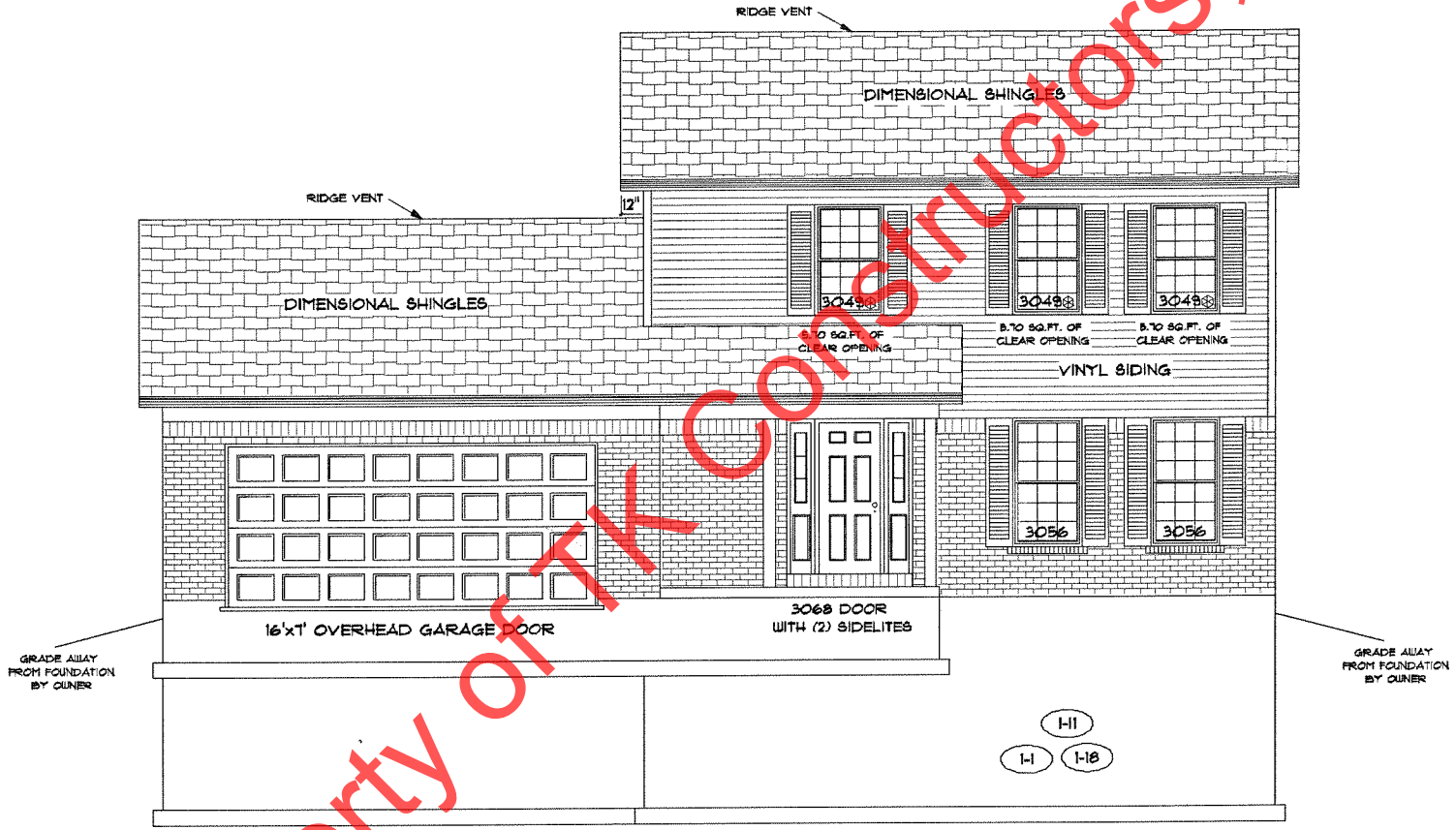


Property of TK Constructors, Inc.



NOTE: STOOPS, STEPS, APRON AND DRIVE BY OWNER

FRONT ELEVATION

16" FOOTER WIDTH MIN. SIZE

TK CONSTRUCTORS
BIRMINGHAM

DATE: August 14, 2012

JOB NO.: 113-12-0051



ADDENDUM I

VER: 05100933A

DRAWING BY: SES

SCALE: 1/8 IN.=1 FT.

PAGE NO.:

1B

FLOOR PLAN

ANDERSEN WINDOW SCHEDULE
- 200 SERIES -

ANDERSEN MODEL NO.	R.O. SIZE
3030	36" x 36"
3040	36" x 48"
3049*	36" x 51"
3056*	36" x 66"
3060*	36" x 72"
3049 MULL*	73" x 51"
3056 MULL*	73" x 66"
3060 MULL*	73" x 72"

ANDERSEN SLIDING DOOR
R.O. 72 3/4" x 82 7/8"

3'-0" FRONT DOOR
R.O. 38 3/8" x 82 1/2"

3'-0" FRONT DOOR WITH (1) SIDELITE
R.O. 51 7/8" x 82 1/2"

3'-0" FRONT DOOR WITH (2) SIDELITES
R.O. 65 3/8" x 82 1/2"

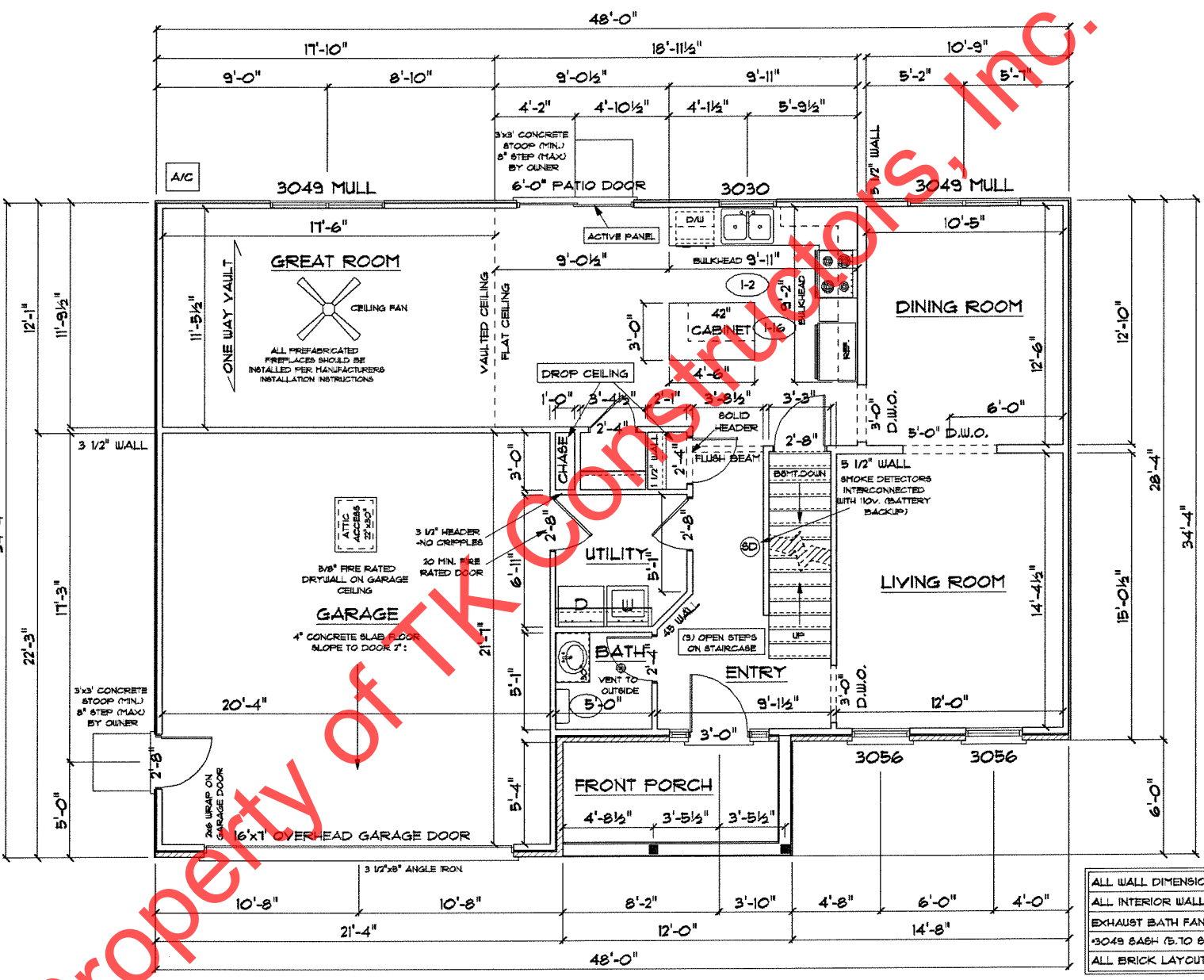
R.O. FOR BI-FOLD DOORS USING DRYWALL
JAMB FACING = 1 1/4" + DOOR SIZE x (81 1/2")

R.O. FOR BYPASS DOORS USING DRYWALL
JAMB FACING MAKE SAME AS BOTH DOORS
ADDED TOGETHER

ALL INTERIOR DOORS
SIZE + 2" TO WIDTH x 82 1/2" HIGH

R.O. POCKET DOOR
(2x DOOR WIDTH + 1") x 85" HIGH

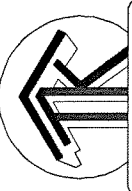
* - DENOTES OPENING MEETS
EGRESS REQUIREMENTS



ALL WALL DIMENSIONS ARE FACE TO FACE OF STUDS
ALL INTERIOR WALLS ARE 3 1/2" (UNLESS NOTED)
EXHAUST BATH FANS ARE VENTED TO OUTSIDE AIR
*3049 BASH (5.10 EQ.FT. OF CLEAR OPENING)
ALL BRICK LAYOUT MEASUREMENTS ARE 4"

PAGE NO: **4B**

ADDENDUM 1
VER: 05100933A
DRAWING BY: SES
SCALE: 1/8 IN. = 1 FT.



DATE: August 14, 2012

CONSTRUCTORS

TK CONSTRUCTORS
BIRMINGHAM

JOB NO: 113-12-0051

SECOND FLOOR PLAN

FIRST FLOOR SQ.FT.	1,024
SECOND FLOOR SQ.FT.	774
TOTAL LIVING SQ.FT.	1,798
GARAGE	464
TOTAL SQ.FT.	2,262
EXCLUDING PORCH	72

ANDERSEN WINDOW SCHEDULE - 200 SERIES -	
ANDERSEN MODEL NO.	R.O. SIZE
3030	36" x 36"
3040	36" x 48"
3049*	36" x 57"
3056*	36" x 66"
3060*	36" x 72"
3049 MULL*	73" x 57"
3056 MULL*	73" x 66"
3060 MULL*	73" x 72"
ANDERSEN SLIDING DOOR R.O. 72 3/4" x 82 1/8"	
3'-0" FRONT DOOR R.O. 38 3/8" x 82 1/2"	
3'-0" FRONT DOOR WITH (1) SIDELITE R.O. 51 7/8" x 82 1/2"	
3'-0" FRONT DOOR WITH (2) SIDELITES R.O. 65 3/8" x 82 1/2"	
R.O. FOR BI-FOLD DOORS USING DRYWALL JAMB FACING + 1 1/4" + DOOR SIZE x (81 1/2")	
R.O. FOR BYPASS DOORS USING DRYWALL JAMB FACING MAKE SAME AS BOTH DOORS ADDED TOGETHER	
ALL INTERIOR DOORS SIZE + 2" TO WIDTH x 82 1/2" HIGH	
R.O. POCKET DOOR (2x DOOR WIDTH + 1") x 85" HIGH	

* - DENOTES OPENING MEETS
EGRESS REQUIREMENTS

