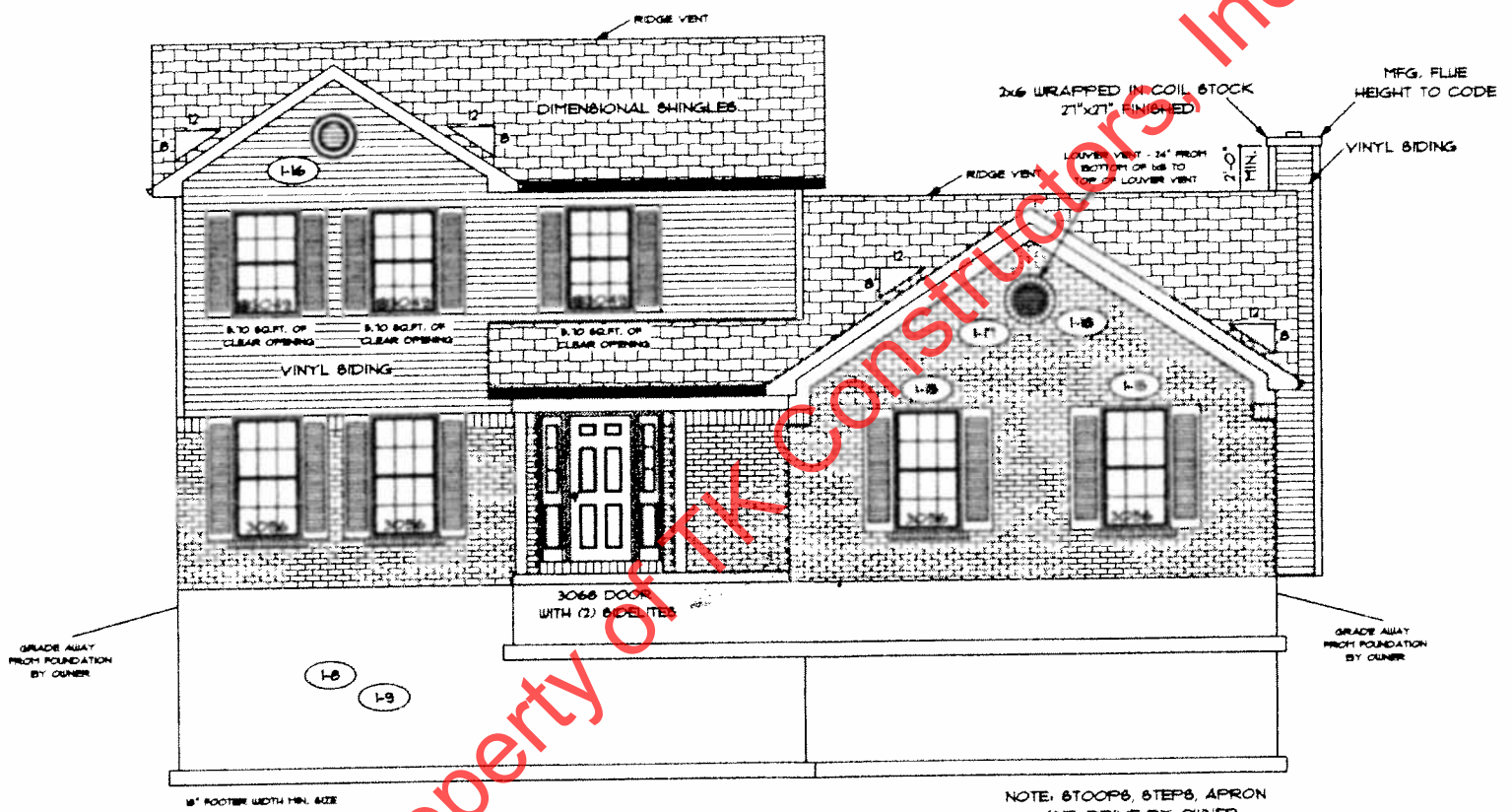



marked up 10-1-13



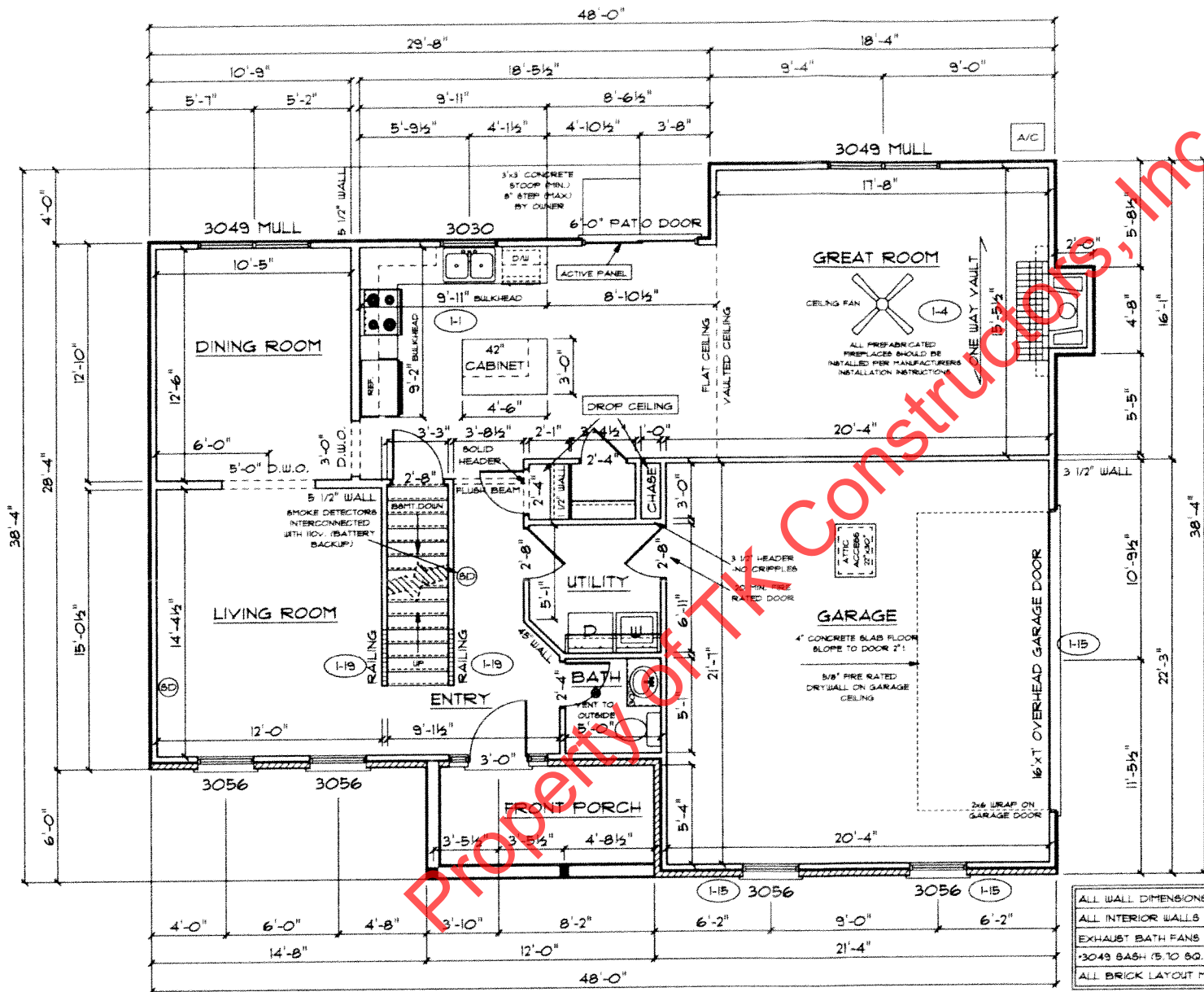
FRONT ELEVATION

Property of TK Constructors Inc.

ADDENDUM 1	PAGE NO.: 1B
VER:	DRAWING BY: SES
	1/8" = 1'
 CONSTRUCTORS	
DATE: July 25, 2013	JOB NO.: 112-13-0080

TK CONSTRUCTORS
BIRMINGHAM

G.



FIRST FLOOR PLAN

ANDERSEN WINDOW SCHEDULE - 200 SERIES -

ANDERSEN MODEL NO.	R.O. SIZE
3030	36" x 36"
3040	36" x 48"
3049*	36" x 57"
3056*	36" x 66"
3060*	36" x 72"
3049 MULL*	73" x 57"
3056 MULL*	73" x 66"
3060 MULL*	73" x 72"

ANDERSEN SLIDING DOOR
 R.O. 72 3/4" x 82 1/8"

3'-0" FRONT DOOR
 R.O. 38 3/8" x 82 1/2"

3'-0" FRONT DOOR WITH (1) SIDELITE
 R.O. 51 1/8" x 82 1/2"

3'-0" FRONT DOOR WITH (2) SIDELITES
 R.O. 65 3/8" x 82 1/2"

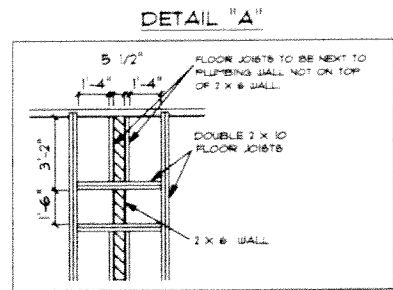
R.O. FOR BI-FOLD DOORS USING DRYWALL
 JAMB FACING + 1 1/4" + DOOR SIZE x (81 1/2")

R.O. FOR BYPASS DOORS USING DRYWALL
 JAMB FACING MAKE SAME AS BOTH DOORS
 ADDED TOGETHER

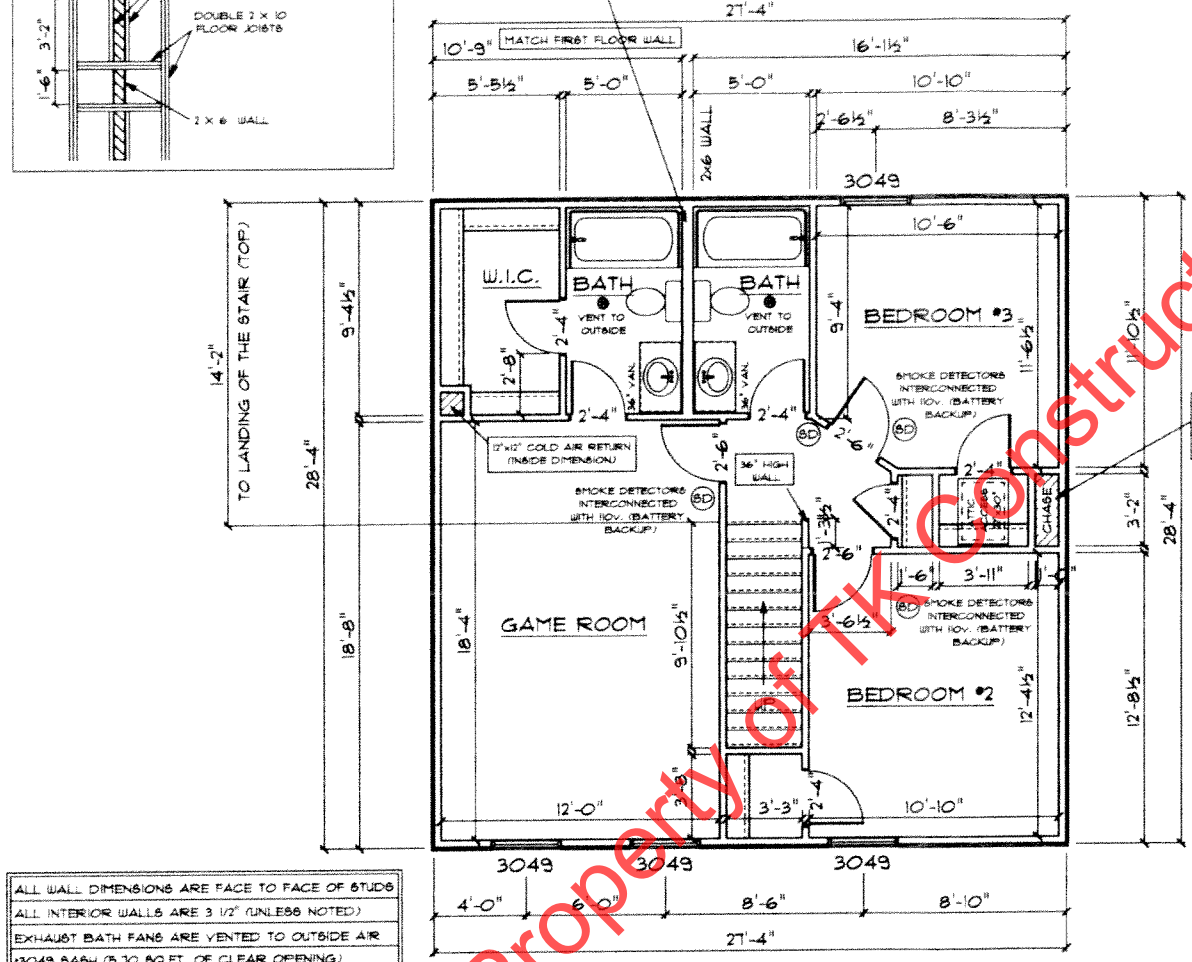
ALL INTERIOR DOORS
 SIZE + 2" TO WIDTH x 82 1/2" HIGH

R.O. POCKET DOOR
 (2x DOOR WIDTH + 1") x 85" HIGH

* - DENOTES OPENING MEETS EGRESS REQUIREMENTS



SEE DETAIL "A" FOR FLOOR JOIST LAYOUT



ALL WALL DIMENSIONS ARE FACE TO FACE OF STUDS
 ALL INTERIOR WALLS ARE 3/2" (UNLESS NOTED)
 EXHAUST BATH FANS ARE VENTED TO OUTSIDE AIR
 3049 BATH (5.10 SQ.FT. OF CLEAR OPENING)
 ALL BRICK LAYOUT MEASUREMENTS ARE 4"

SECOND FLOOR PLAN

FIRST FLOOR SQ.FT.	1,091
SECOND FLOOR SQ.FT.	1,174
TOTAL LIVING SQ.FT.	1,871
GARAGE	464
TOTAL SQ.FT.	2,335
EXCLUDING PORCH	72

ANDERSEN WINDOW SCHEDULE
- 200 SERIES -

ANDERSEN MODEL NO.	R.O. SIZE
3030	36" x 36"
3040	36" x 48"
3049*	36" x 51"
3056*	36" x 66"
3060*	36" x 72"
3049 MULL*	73" x 51"
3056 MULL*	73" x 66"
3060 MULL*	73" x 72"

ANDERSEN SLIDING DOOR
R.O. 12 3/4" x 82 7/8"

3'-0" FRONT DOOR
R.O. 38 3/8" x 82 1/2"

3'-0" FRONT DOOR WITH (1) SIDELITE
R.O. 51 7/8" x 82 1/2"

3'-0" FRONT DOOR WITH (2) SIDELITES
R.O. 65 3/8" x 82 1/2"

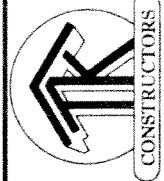
R.O. FOR BI-FOLD DOORS USING DRYWALL
JAMB FACING = 1 1/4" + DOOR SIZE x (81 1/2")

R.O. FOR BYPASS DOORS USING DRYWALL
JAMB FACING MAKE SAME AS BOTH DOORS
ADDED TOGETHER

ALL INTERIOR DOORS
SIZE + 2" TO WIDTH x 82 1/2" HIGH

R.O. POCKET DOOR
(2x DOOR WIDTH + 1") x 85" HIGH

* - DENOTES OPENING MEETS
EGRESS REQUIREMENTS



Handwritten mark resembling the letter 'A'.