

TK CONSTRUCTORS
BIRMINGHAM

DATE: May 10, 2013
 JOB NO: 111-13-0164



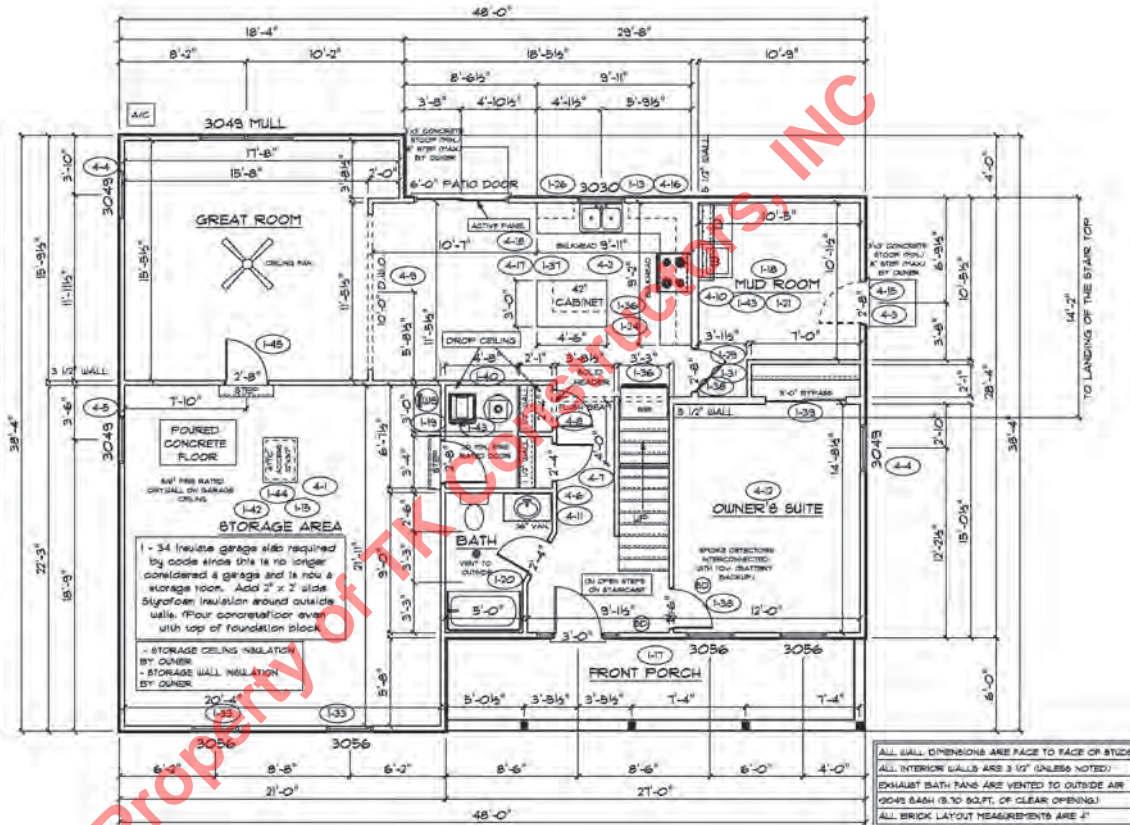
ADDITIONUM 1,4
 VER: SES
 DRAWING BY: SES
 1/8" = 1'

PAGE NO.:
1C

FIRST FLOOR PLAN

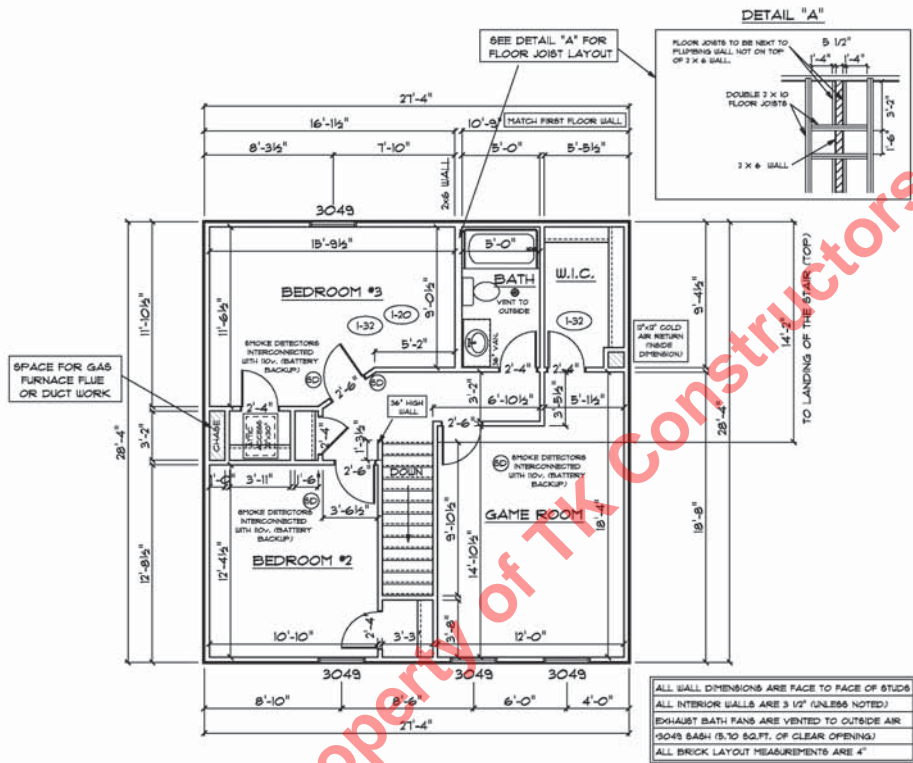
ANDERSEN WINDOW SCHEDULE - 200 SERIES -	
ANDERSEN MODEL NO.	R.O. SIZE
3030	36" x 36"
3040	36" x 48"
3049*	36" x 51"
3056*	36" x 66"
3060*	36" x 72"
3049 MULL*	73" x 51"
3056 MULL*	73" x 66"
3060 MULL*	73" x 72"
ANDERSEN SLIDING DOOR	
R.O. 72 3/4" x 82 1/2"	
3'-0" FRONT DOOR R.O. 36 3/8" x 82 1/2"	
3'-0" FRONT DOOR WITH (1) SIDELITE R.O. 51 7/8" x 82 1/2"	
3'-0" FRONT DOOR WITH (2) SIDELITES R.O. 65 3/8" x 82 1/2"	
R.O. FOR BIFOLD DOORS USING DRYWALL JAMB FACING + 1 3/4" + DOOR SIZE x (81 1/2")	
R.O. FOR BYPASS DOORS USING DRYWALL JAMB FACING MAKE SAME AS BOTH DOORS ADDED TOGETHER	
ALL INTERIOR DOORS SIZE + 2" TO WIDTH x 82 1/2" HIGH	
R.O. POCKET DOOR (2x DOOR WIDTH + 1") x 85" HIGH	

* - DENOTES OPENING MEETS
EGRESS REQUIREMENTS



ALL WALL DIMENSIONS ARE FACE TO FACE OF STUDS
ALL INTERIOR WALLS ARE 3/4" (UNLESS NOTED)
EXHAUST BATH FANS ARE VENTED TO OUTSIDE AIR
DOES BATH (8.30 SQFT. OF CLEAR OPENING)
ALL BRICK LAYOUT MEASUREMENTS ARE 4"





SECOND FLOOR PLAN

FIRST FLOOR SQ.FT.	1,091
SECOND FLOOR SQ.FT.	1,144
TOTAL LIVING SQ.FT.	1,811
GARAGE	462
TOTAL SQ.FT.	2,333
EXCLUDING PORCH	162

ANDERSEN WINDOW SCHEDULE - 200 SERIES -

ANDERSEN MODEL NO.	R.O. SIZE
3030	36" x 36"
3040	36" x 48"
3049*	36" x 51"
3056*	36" x 66"
3060*	36" x 72"
3049 MULL*	73" x 51"
3056 MULL*	73" x 66"
3060 MULL*	73" x 72"

ANDERSEN SLIDING DOOR
R.O. 72 3/4" x 82 1/8"

3'-0" FRONT DOOR
R.O. 36 3/8" x 82 1/2"

3'-0" FRONT DOOR WITH (1) SIDELITE
R.O. 51 1/8" x 82 1/2"

3'-0" FRONT DOOR WITH (2) SIDELITES
R.O. 65 3/8" x 82 1/2"

R.O. FOR BI-FOLD DOORS USING DRYWALL JAMB FACING + 1 1/4" + DOOR SIZE x (81 1/2")

R.O. FOR BY-PASS DOORS USING DRYWALL JAMB FACING MAKE SAME AS BOTH DOORS ADDED TOGETHER

ALL INTERIOR DOORS
SIZE + 2" TO WIDTH x 82 1/2" HIGH

R.O. POCKET DOOR
(2) DOOR WIDTH + 1" x 85" HIGH

* - DENOTES OPENING MEETS EGRESS REQUIREMENTS