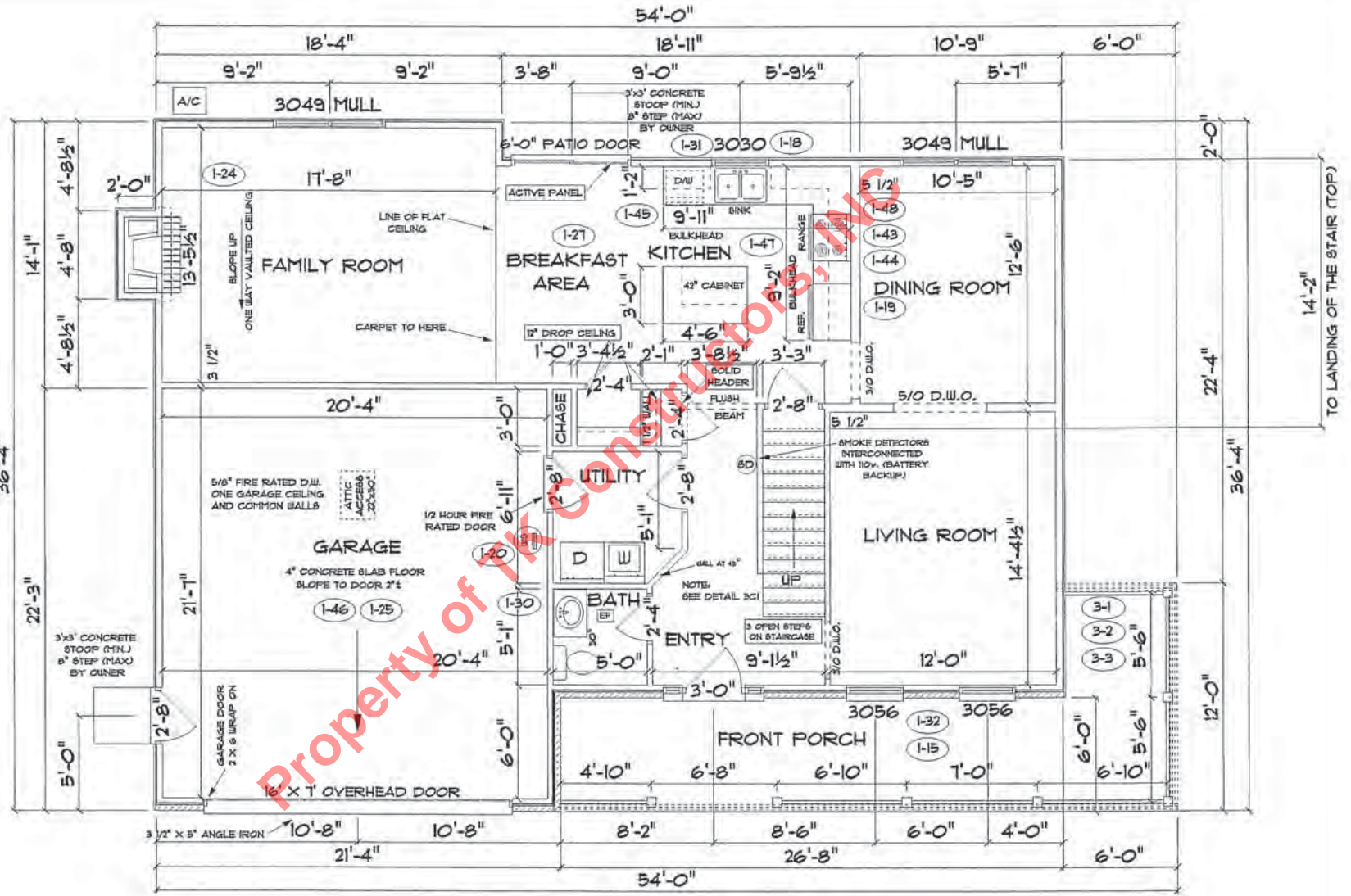


FRONT ELEVATION

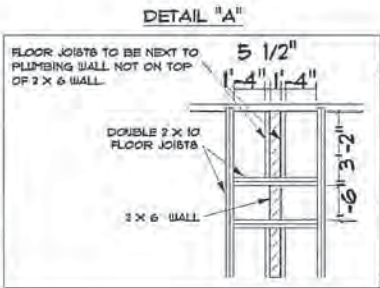
SCALE: 3/16" = 1'



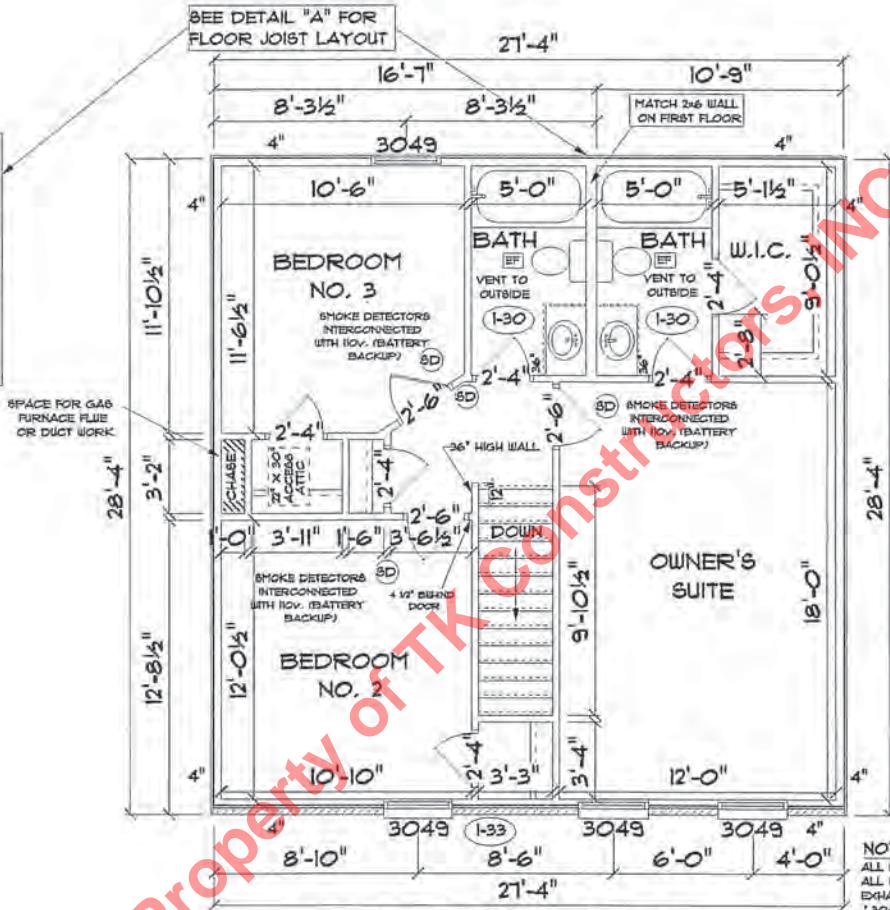
FIRST FLOOR PLAN

SCALE: 3/16" = 1'

CONSTRUCTORS MUNCIE, INDIANA	BIRMINGHAM	DATE: DECEMBER 8, 2006	ADDRESS:	JOB NO. 110-06-0056	DRAWN BY: MEP 06/13/06	SHEET NO. 4B
--	-------------------	---------------------------	----------	------------------------	---------------------------	--------------



SEE DETAIL "A" FOR FLOOR JOIST LAYOUT



ANDERSEN WINDOWS	
MODEL	R.O. SIZE
3030	36" x 36"
3049	36" x 51"
3056	36" x 66"
3049 MULL	73" x 51"
3056 MULL	73" x 66"

ANDERSEN SLIDING DOOR	
R.O. 12 3/4" x 82 1/8"	
3/0 FRONT DOOR	
R.O. 3'-2 1/2" x 82 1/2"	
3/0 FRONT DOOR WITH (1) SIDE LIGHT R.O. 4'-3 1/2" x 82"	
3/0 FRONT DOOR WITH (2) SIDE LIGHTS R.O. 5'-5" x 82"	
R.O. FOR BYFOLD DOORS USING DRY-WALL JAMB FACING IS 1 1/4" + DOOR SIZE	
R.O. FOR BYPASS DOORS USING DRYWALL JAMB FACING MAKE SAME AS BOTH DOORS ADDED TOGETHER	
ALL INTERIOR DOORS	
SIZE + 2" TO WIDTH X 82 1/2" HIGH	

NOTE:
 ALL WALL DIMENSIONS ARE FACE TO FACE OF STUDS
 ALL INTERIOR WALLS ARE 3 1/2" (UNLESS NOTED)
 EXHAUST BATH FANS VENT TO OUTSIDE AIR
 3049 SASH (5.70 SQ.FT. OF CLEAR OPENING)
 ALL BRICK LAYOUT MEASUREMENTS ARE 4 INCHES

SECOND FLOOR PLAN

FIRST FLOOR	1,060 SQ. FT.
SECOND FLOOR	114 SQ. FT.
TOTAL LIVING SPACE	1,834 SQ. FT.
GARAGE	464 SQ. FT.
TOTAL SQ.FT.	2,298 SQ. FT.
(EXCLUDING FRONT PORCH)	232 SQ. FT.

SCALE: 3/16" = 1'