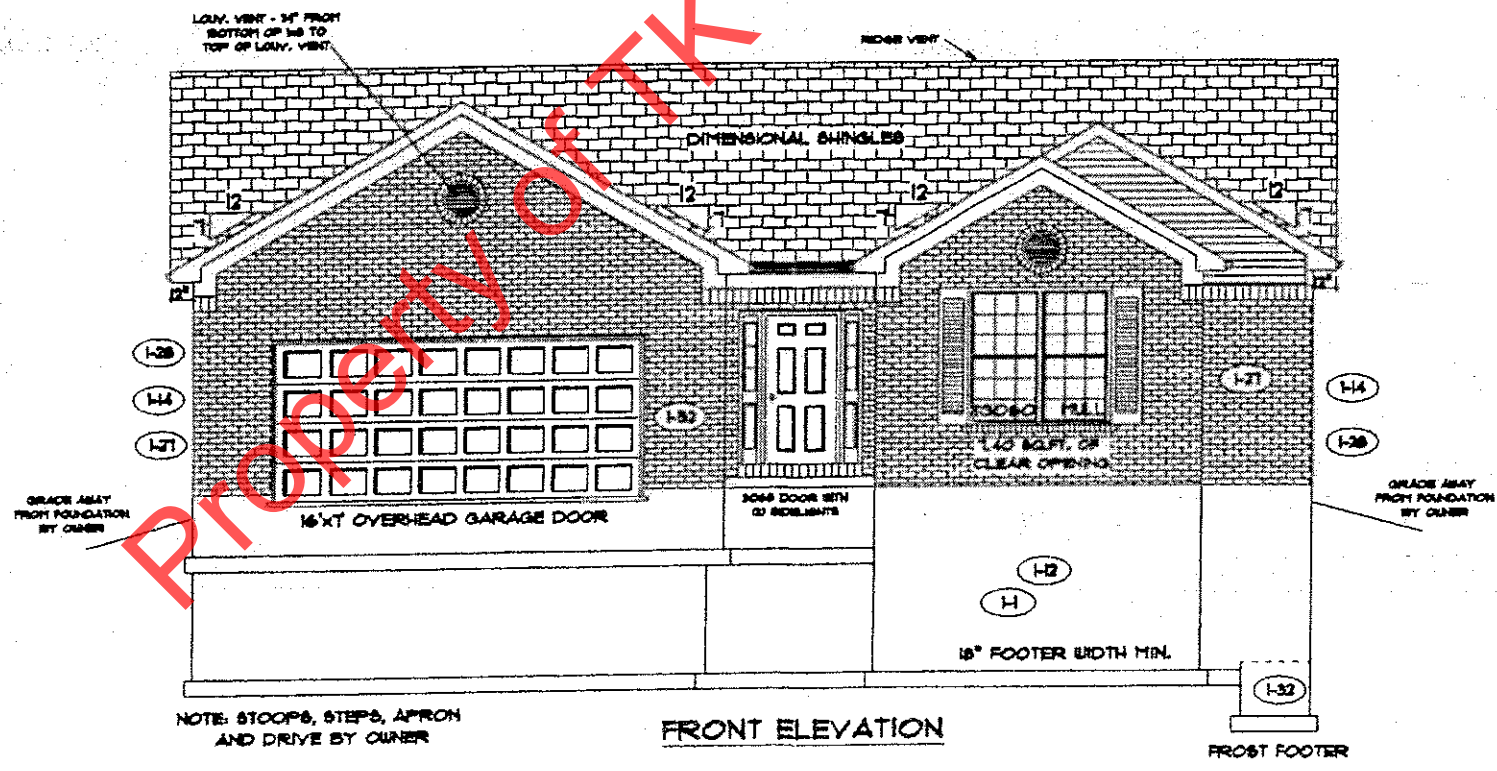
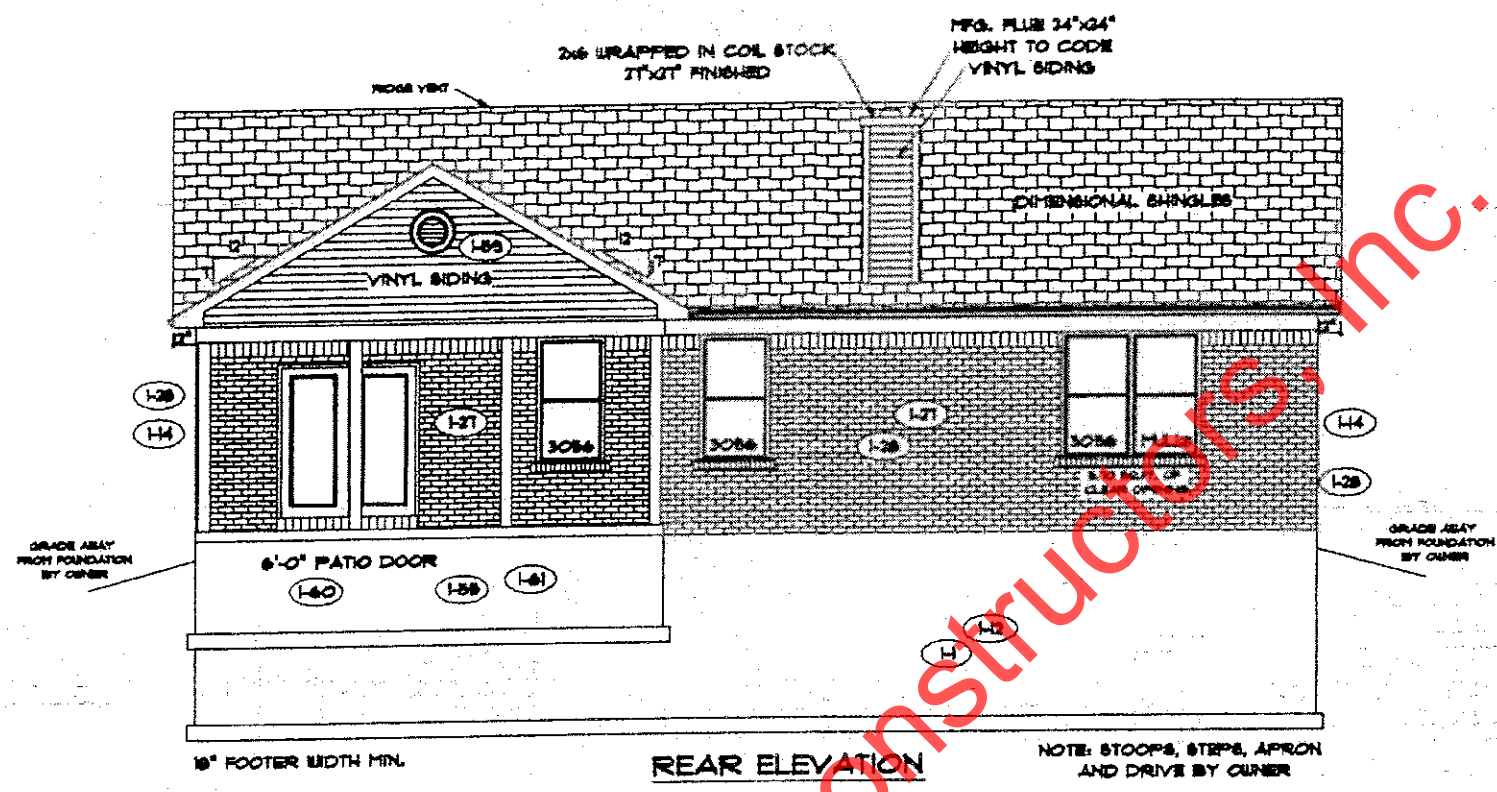


marked-up. 3-23-13



PAGE NO: 1B

ADDENDUM 1

VER: 091912

DRAWING BY: SES

SCALE: 1/8"=1 FT.

DATE: February 07, 2013

JOB NO: 113-13-0004

TK CONSTRUCTORS

ALEXANDRIA

HP

FLOOR PLAN

TOTAL LIVING SQ.FT.	1,719
GARAGE	499
TOTAL SQ.FT.	2,218
EXCLUDING FRONT PORCH	45
EXCLUDING REAR PORCH	200

**ANDERSEN WINDOW SCHEDULE
- 200 SERIES -**

ANDERSEN MODEL NO.	R.O. SIZE
3030	36" x 36"
3040	36" x 48"
3049*	36" x 57"
3056*	36" x 66"
3060*	36" x 72"
3049 MULL*	73" x 57"
3056 MULL*	73" x 66"
3060 MULL*	73" x 72"

ANDERSEN SLIDING DOOR
R.O. 72 3/4" x 82 1/8"

3'-0" FRONT DOOR
R.O. 36 3/8" x 82 1/2"

3'-0" FRONT DOOR WITH (1) SIDELITE
R.O. 81 1/8" x 82 1/2"

3'-0" FRONT DOOR WITH (2) SIDELITES
R.O. 65 3/8" x 82 1/2"

R.O. FOR BI-FOLD DOORS USING DRYWALL
JAMB FACING = 1 1/4" + DOOR SIZE x (81 1/2")

R.O. FOR BYPASS DOORS USING DRYWALL
JAMB FACING MAKE SAME AS BOTH DOORS
ADDED TOGETHER

ALL INTERIOR DOORS
SIZE = 2" TO WIDTH x 82 1/2" HIGH

R.O. POCKET DOOR
(2x DOOR WIDTH + 7") x 85" HIGH

* - DENOTES OPENING MEETS
BOARDS REQUIREMENTS

**9'-0" FIRST FLOOR
CEILING HEIGHT (1-4)**

INCLUDES:

- 4 1/4" BASEBOARDS IN LIEU OF 3 1/4"
- 3060 WINDOWS IN LIEU OF 3049 WINDOWS
- 3056 WINDOWS IN LIEU OF 3049 WINDOWS
- DRYWALL WRAPPED OPENINGS 12" TALLER
- 42" KITCHEN CABINETS (1-26)
- 16'x7' GARAGE DOOR STANDARD

