

marked up 7-31-15

PROPERTY OF TK CONSTRUCTORS, INC



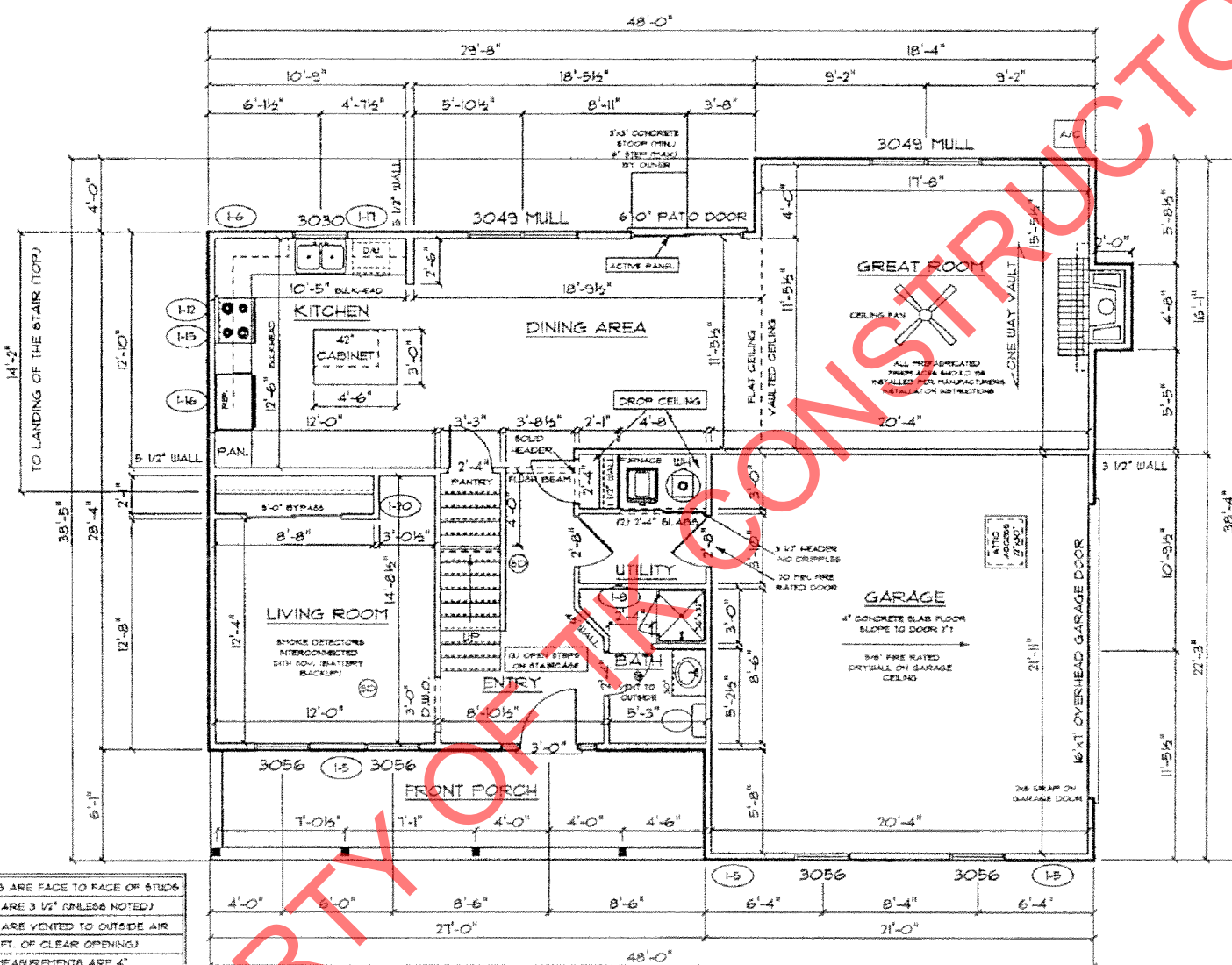
FRONT ELEVATION

NOTE: STOOPS, STEPS, APRON AND DRIVE BY OWNER

TK CONSTRUCTORS BEAUMONT	DATE: August 04, 2015	ADDENDUM 1, 4	PAGE NO.: 10
	JOB NO.: 212-15-0302	VER: 10:28 AM	
		DRAWING BY: SES	
		1/8" = 1'	

VSG KG 8/18/2015

PROPERTY OF TK CONSTRUCTORS, INC



ALL WALL DIMENSIONS ARE FACE TO FACE OF STUDES
 ALL INTERIOR WALLS ARE 3 1/2" (UNLESS NOTED)
 EXHAUST BATH FANS ARE VENTED TO OUTSIDE AIR
 (3049 BATH IS TO 60 FT. OF CLEAR OPENING)
 ALL BRICK LAYOUT MEASUREMENTS ARE 4"

FIRST FLOOR PLAN

ANDERSEN WINDOW SCHEDULE
 - 200 SERIES -

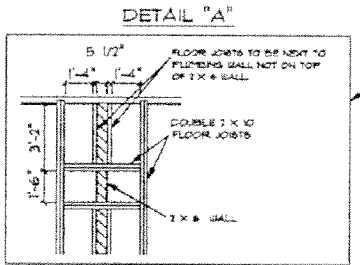
ANDERSEN MODEL NO.	R.O. SIZE
3030	36" x 36"
3040	36" x 48"
3049*	36" x 51"
3056*	36" x 66"
3060*	36" x 72"
3049 MULL*	73" x 51"
3056 MULL*	73" x 66"
3060 MULL*	73" x 72"
ANDERSEN SLIDING DOOR R.O. 72 3/4" x 82 1/8"	
3'-0" FRONT DOOR R.O. 36 3/8" x 82 1/2"	
3'-0" FRONT DOOR WITH (1) SIDELITE R.O. 51 1/8" x 82 1/2"	
3'-0" FRONT DOOR WITH (2) SIDELITES R.O. 65 3/8" x 82 1/2"	
R.O. FOR BI-FOLD DOORS USING DRYWALL JAMB FACING + 1 1/4" + DOOR SIZE x (8) 1/2"	
R.O. FOR BYPASS DOORS USING DRYWALL JAMB FACING MAKE SAME AS BOTH DOORS ADDED TOGETHER	
ALL INTERIOR DOORS SIZE + 2" TO WIDTH x 82 1/2" HIGH	
R.O. POCKET DOOR (2x DOOR WIDTH + 1") x 88" HIGH	

* - DENOTES OPENING MEETS
EGRESS REQUIREMENTS



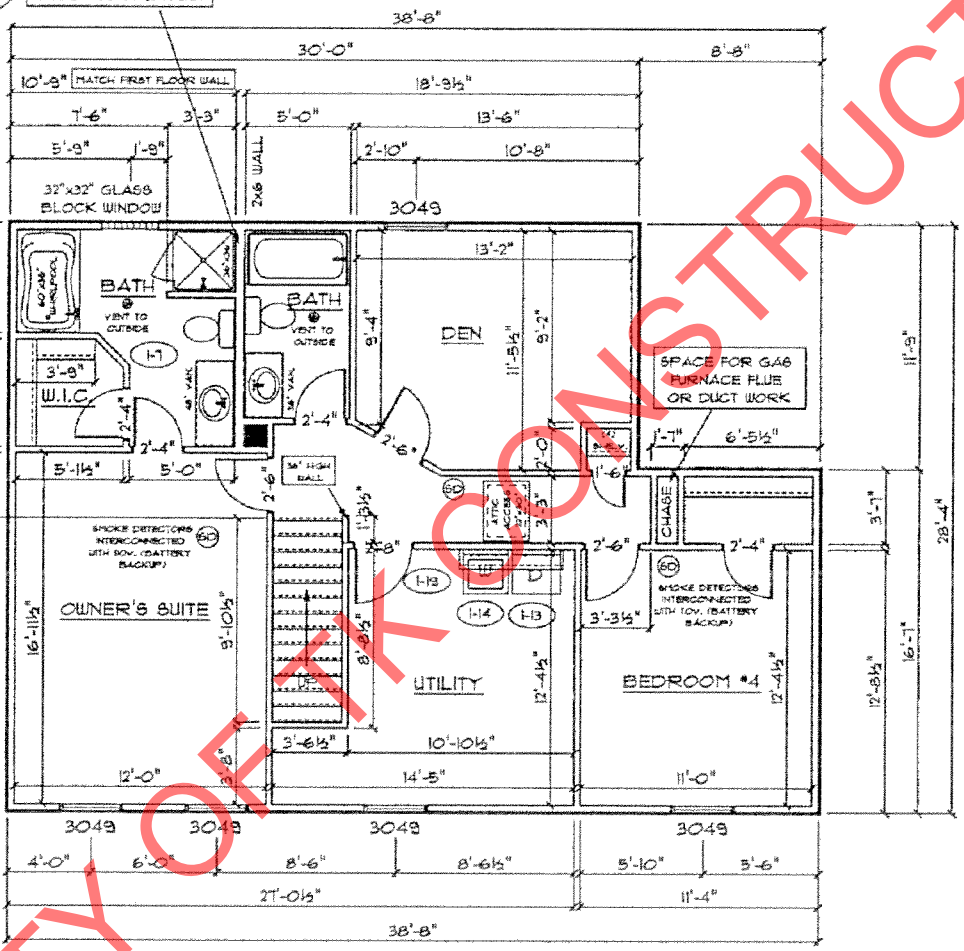
VSG KG 8/18/2015

PROPERTY OF TK CONSTRUCTORS, INC



SEE DETAIL "A" FOR FLOOR JOIST LAYOUT

ALL WALL DIMENSIONS ARE FACE TO FACE OF STUDS
 ALL INTERIOR WALLS ARE 3/4" UNLESS NOTED!
 EXHAUST BATH FANS ARE VENTED TO OUTSIDE AIR
 3049 546H (5.70 SQ.FT. OF CLEAR OPENING)
 ALL BRICK LAYOUT MEASUREMENTS ARE 4"



SECOND FLOOR PLAN

FIRST FLOOR SQ.FT.	1,091
SECOND FLOOR SQ.FT.	993
TOTAL LIVING SQ.FT.	2,080
GARAGE	462
TOTAL SQ.FT.	2,552
EXCLUDING PORCH	160

ANDERSEN WINDOW SCHEDULE - 200 SERIES -

ANDERSEN MODEL NO.	R.O. SIZE
3030	36" x 36"
3040	36" x 48"
3049*	36" x 57"
3056*	36" x 66"
3060*	36" x 72"
3049 MULL*	13" x 57"
3056 MULL*	13" x 66"
3060 MULL*	13" x 72"

ANDERSEN SLIDING DOOR R.O. 72 3/4" x 82 1/8"
3'-0" FRONT DOOR R.O. 38 3/8" x 82 1/2"
3'-0" FRONT DOOR WITH (1) SIDELITE R.O. 51 7/8" x 82 1/2"
3'-0" FRONT DOOR WITH (2) SIDELITES R.O. 65 3/8" x 82 1/2"
R.O. FOR BI-FOLD DOORS USING DRYWALL JAMB FACING + 1 1/4" + DOOR SIZE x (81 1/2")
R.O. FOR BYPASS DOORS USING DRYWALL JAMB FACING MAKE SAME AS BOTH DOORS ADDED TOGETHER
ALL INTERIOR DOORS SIZE + 2" TO WIDTH x 82 1/2" HIGH
R.O. POCKET DOOR (2x DOOR WIDTH + 1") x 85" HIGH

* - DENOTES OPENING MEETS EGRESS REQUIREMENTS



VSG KG 8/18/2015