




FRONT ELEVATION

NOTE: STOOPS, STEPS, APRON AND DRIVE BY OWNER

 TK CONSTRUCTORS BEAUMONT	DATE: August 05, 2013	ADDENDUM 1 VER: 070810 DRAWING BY: RLC 1/8" = 1'	PAGE NO: 1B
	JOB NO.: 112-130097		

MSM
RLC

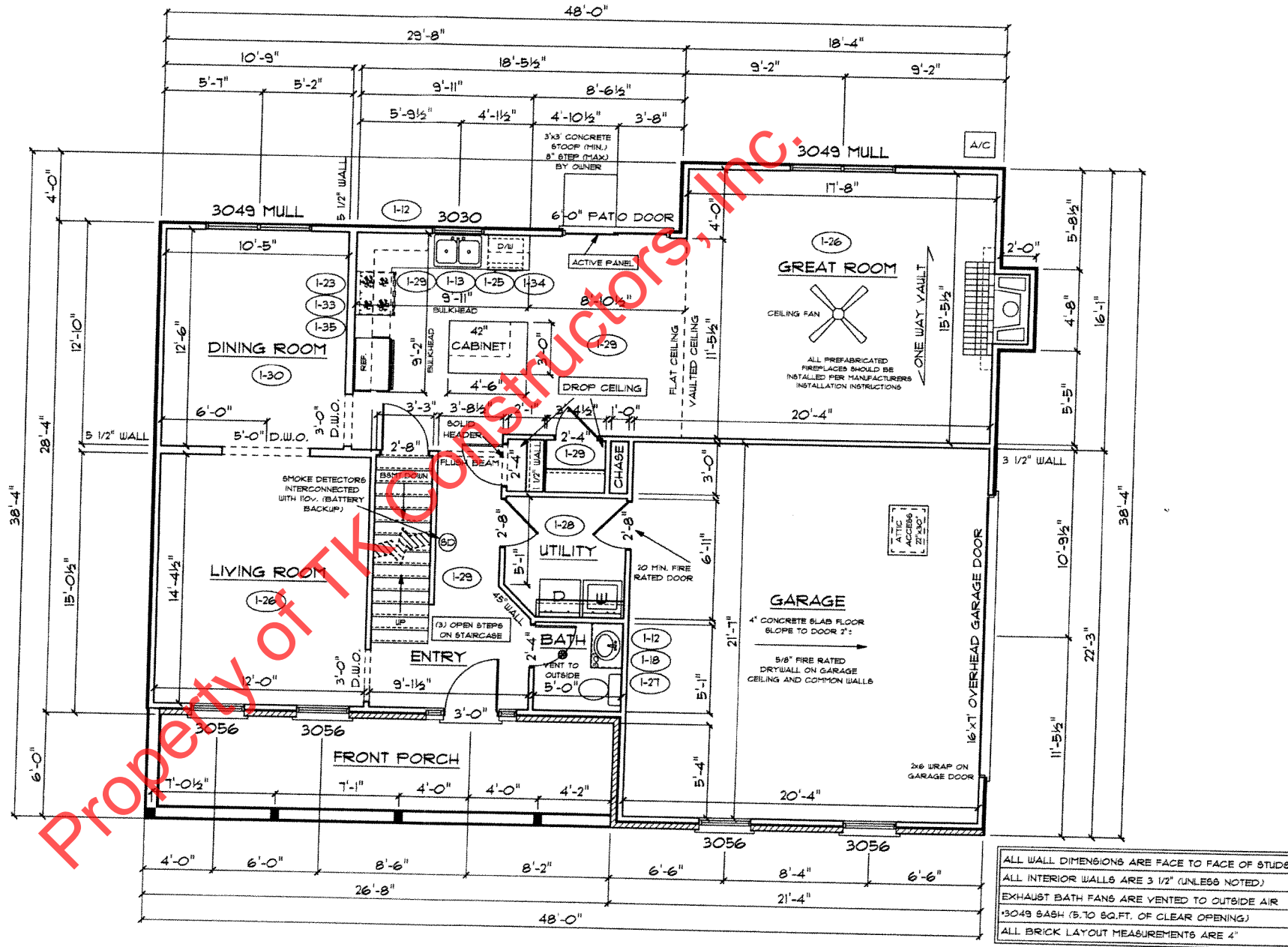
FIRST FLOOR PLAN

* - DENOTES OPENING MEETS EGRESS REQUIREMENTS

First Floor Sq.ft.	1,091
Second Floor Sq.ft.	993
Total Living Sq.ft.	2,090
Garage	464
Total Sq.ft.	2,554
Excluding Porch	160

ANDERSEN WINDOW SCHEDULE - 200 SERIES -	
ANDERSEN MODEL NO.	R.O. SIZE
3030	36" x 36"
3040	36" x 48"
3049*	36" x 57"
3056*	36" x 66"
3060*	36" x 72"
3049 MULL*	73" x 57"
3056 MULL*	73" x 66"
3060 MULL*	73" x 72"
ANDERSEN SLIDING DOOR R.O. 72 3/4" x 82 1/8"	
3'-0" FRONT DOOR R.O. 38 3/8" x 82 1/2"	
3'-0" FRONT DOOR WITH (1) SIDELITE R.O. 51 1/8" x 82 1/2"	
3'-0" FRONT DOOR WITH (2) SIDELITES R.O. 65 3/8" x 82 1/2"	
R.O. FOR BI-FOLD DOORS USING DRYWALL JAMB FACING + 1 1/4" + DOOR SIZE x (81 1/2")	
R.O. FOR BYPASS DOORS USING DRYWALL JAMB FACING MAKE SAME AS BOTH DOORS ADDED TOGETHER	
ALL INTERIOR DOORS SIZE + 2" TO WIDTH x 82 1/2" HIGH	
R.O. POCKET DOOR (2x DOOR WIDTH + 1") x 85" HIGH	

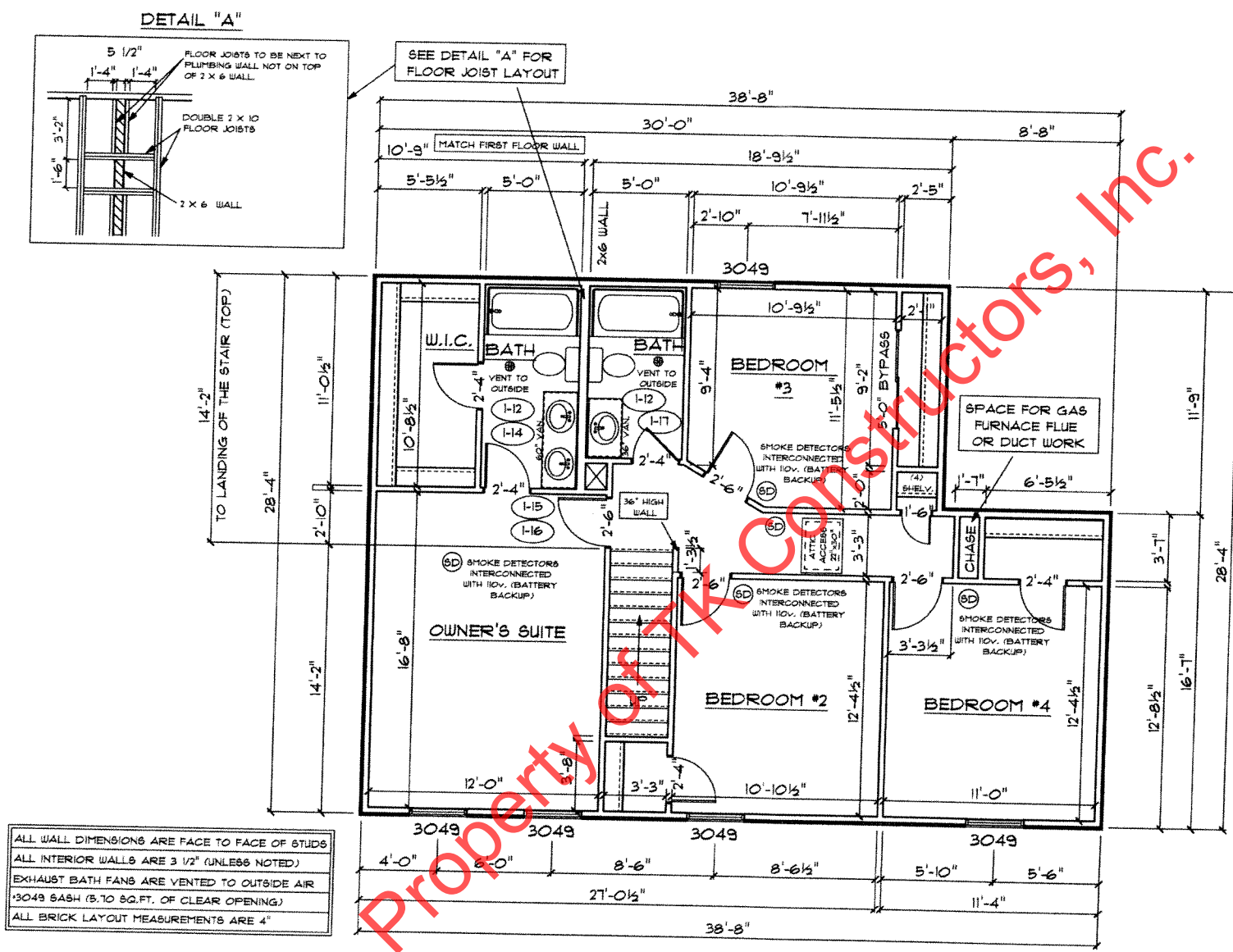
* - DENOTES OPENING MEETS EGRESS REQUIREMENTS



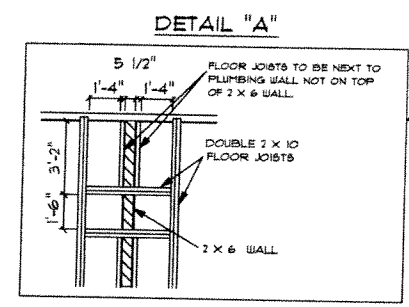
ALL WALL DIMENSIONS ARE FACE TO FACE OF STUDS
 ALL INTERIOR WALLS ARE 3/2" (UNLESS NOTED)
 EXHAUST BATH FANS ARE VENTED TO OUTSIDE AIR
 *3049 BASH (5.70 SQ.FT. OF CLEAR OPENING)
 ALL BRICK LAYOUT MEASUREMENTS ARE 4"

*MAM
MBM*





ALL WALL DIMENSIONS ARE FACE TO FACE OF STUDS
 ALL INTERIOR WALLS ARE 3 1/2" (UNLESS NOTED)
 EXHAUST BATH FANS ARE VENTED TO OUTSIDE AIR
 3049 SASH (5.10 SQ.FT. OF CLEAR OPENING)
 ALL BRICK LAYOUT MEASUREMENTS ARE 4"



SEE DETAIL "A" FOR FLOOR JOIST LAYOUT

SECOND FLOOR PLAN

First Floor Sq.ft.	1,091
Second Floor Sq.ft.	993
Total Living Sq.ft.	2,090
Garage	464
Total Sq.ft.	2,554
Excluding Porch	160

ANDERSEN WINDOW SCHEDULE
 - 200 SERIES -

ANDERSEN MODEL NO.	R.O. SIZE
3030	36" x 36"
3040	36" x 48"
3049*	36" x 57"
3056*	36" x 66"
3060*	36" x 72"
3049 MULL*	73" x 57"
3056 MULL*	73" x 66"
3060 MULL*	73" x 72"

ANDERSEN SLIDING DOOR
 R.O. 12 3/4" x 82 1/8"

3'-0" FRONT DOOR
 R.O. 38 3/8" x 82 1/2"

3'-0" FRONT DOOR WITH (1) SIDELITE
 R.O. 51 7/8" x 82 1/2"

3'-0" FRONT DOOR WITH (2) SIDELITES
 R.O. 65 3/8" x 82 1/2"

R.O. FOR BI-FOLD DOORS USING DRYWALL
 JAMB FACING = 1 1/4" + DOOR SIZE x (81 1/2")

R.O. FOR BYPASS DOORS USING DRYWALL
 JAMB FACING MAKE SAME AS BOTH DOORS
 ADDED TOGETHER

ALL INTERIOR DOORS
 SIZE + 2" TO WIDTH x 82 1/2" HIGH

R.O. POCKET DOOR
 (2x DOOR WIDTH + 1") x 85" HIGH

* - DENOTES OPENING MEETS
 EGRESS REQUIREMENTS

TK CONSTRUCTORS
 BEAUMONT

DATE: August 05, 2013

JOB NO.: 112-130097

ADDENDUM 1

VER: 070810

DRAWING BY: RLC

1/8" = 1'



PAGE NO:

5B

MATH
 MBM