

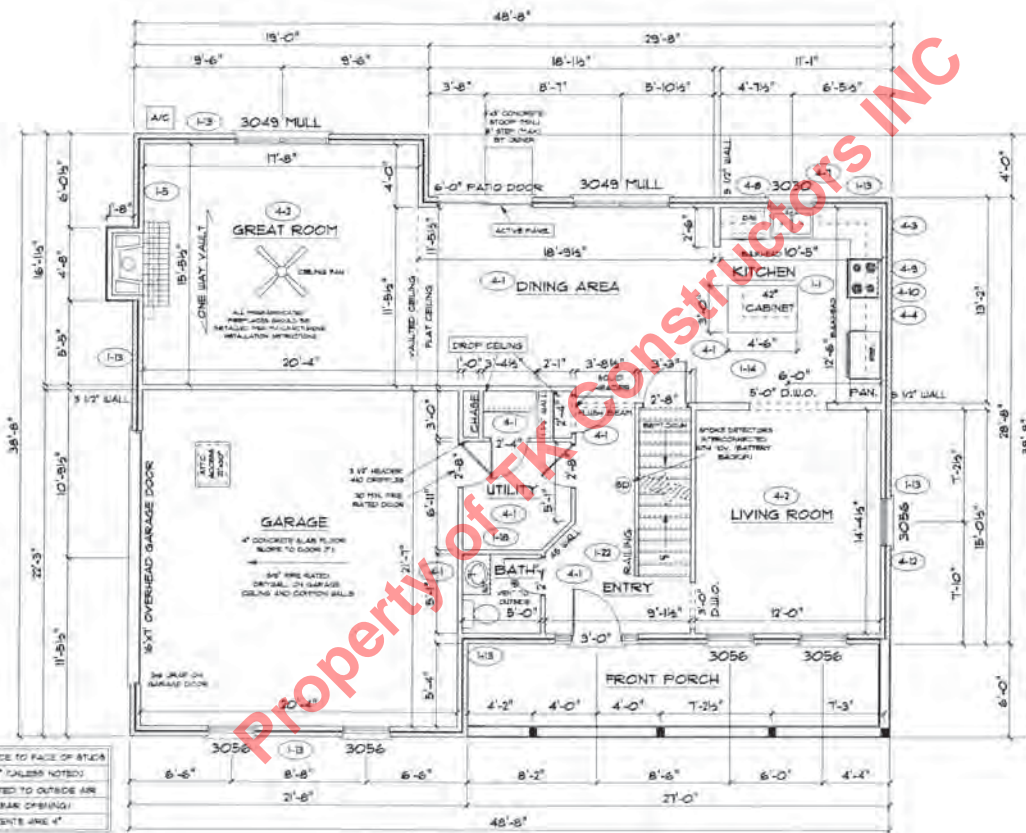
Property of TK CONSTRUCTORS INC

NOTE: STOOPS, STEPS, APRON AND DRIVE BY OWNER

FRONT ELEVATION

8\"/>

<h1 style="margin: 0;">TK CONSTRUCTORS</h1> <h2 style="margin: 0;">BEAUMONT</h2>	<p>DATE: March 12, 2012</p> <p>ADDENDUM 1/4 VER. 070610 DRAWING BY: SBS SCALE: 1/8" = 1 FT.</p>
<p>JOB NO.: 112-12-0091</p>	<p>PAGE NO.: 1B</p>



ALL WALL DIMENSIONS ARE FACE TO FACE OF BRICK
 ALL INTERIOR WALLS ARE 2 1/2" CALSSS NOTED
 EXHAUST BATH FANS ARE VENTED TO OUTSIDE AIR
 HOURS 8:00- 6:30 EQUI. OF CLEAR OPENING!
 ALL BRICK LAYOUT MEASUREMENTS ARE 4"

FIRST FLOOR PLAN

ANDERSEN WINDOW SCHEDULE
 - 200 SERIES -

ANDERSEN MODEL NO.	R.O. SIZE
3030	36" x 36"
3040	36" x 48"
3049*	36" x 57"
3056*	36" x 66"
3060*	36" x 72"
3049 MULL*	73" x 57"
3056 MULL*	73" x 66"
3060 MULL*	73" x 72"
ANDERSEN SLIDING DOOR R.O. 72 3/4" x 82 1/8"	
3'-0" FRONT DOOR R.O. 38 3/8" x 82 1/2"	
3'-0" FRONT DOOR WITH (1) SIDELITE R.O. 51 7/8" x 82 1/2"	
3'-0" FRONT DOOR WITH (2) SIDELITES R.O. 65 3/8" x 82 1/2"	
R.O. FOR BI-FOLD DOORS USING DRYWALL JAMB FACING = 1/4" x DOOR SIZE	
R.O. FOR BYPASS DOORS USING DRYWALL JAMB FACING MAKE BLAME AS BOTH DOORS ADDED TOGETHER	
ALL INTERIOR DOORS SIZE = 2' TO WIDTH x 82 1/2" HIGH	
R.O. POCKET DOOR DOOR WIDTH = 17" x 85" HIGH	

* DENOTES OFFERING MEETS
 BOARD REQUIREMENTS

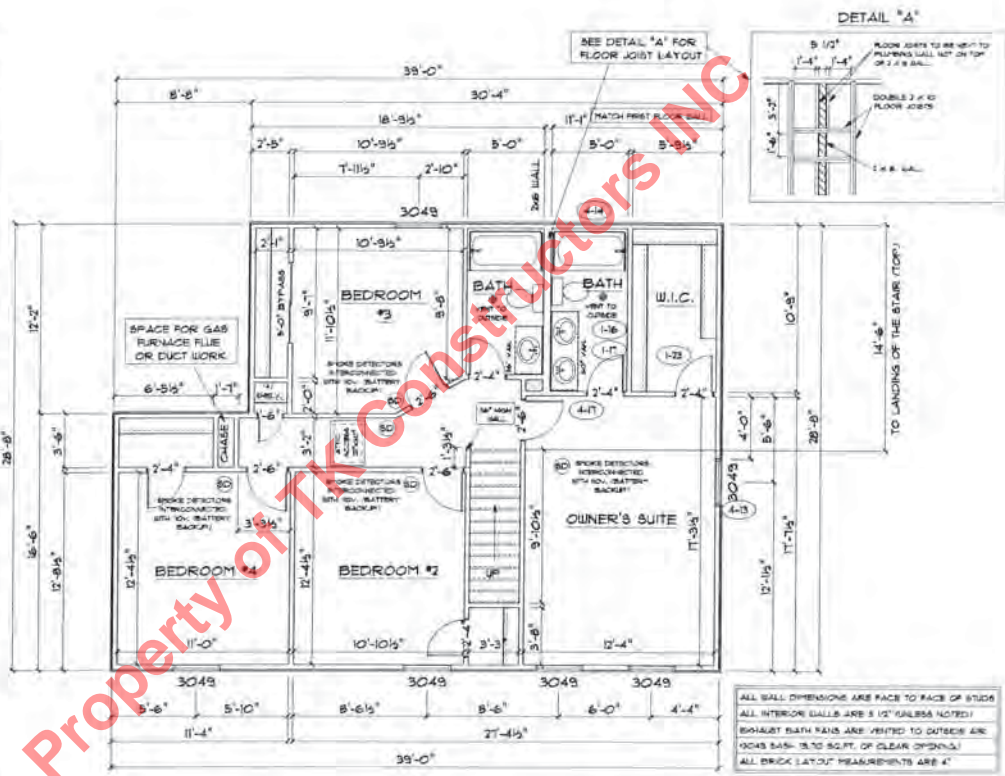


SECOND FLOOR PLAN

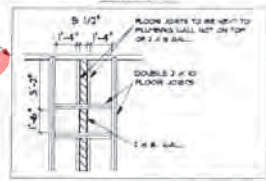
FIRST FLOOR SQ.FT.	1,129
SECOND FLOOR SQ.FT.	1,012
TOTAL LIVING SQ.FT.	2,141
GARAGE	471
TOTAL SQ.FT.	2,612
EXCLUDING PORCH	162

ANDERSEN WINDOW SCHEDULE - 200 SERIES -	
ANDERSEN MODEL NO.	R.O. SIZE
3030	36" x 36"
3040	36" x 48"
3049*	36" x 51"
3056*	36" x 66"
3060*	36" x 72"
3049 MULL*	13" x 51"
3056 MULL*	13" x 66"
3060 MULL*	13" x 72"
ANDERSEN SLIDING DOOR R.O. 72 3/4" x 82 7/8"	
3'-0" FRONT DOOR R.O. 36 3/8" x 82 1/2"	
3'-0" FRONT DOOR WITH (1) SIDELITE R.O. 51 7/8" x 82 1/2"	
3'-0" FRONT DOOR WITH (2) SIDELITES R.O. 65 3/8" x 82 1/2"	
R.O. FOR BI-FOLD DOORS USING DRYWALL JAMB FACING + 1/4" + DOOR SIZE	
R.O. FOR BYPASS DOORS USING DRYWALL JAMB FACING MAKE SAME AS BOTH DOORS ADDED TOGETHER	
ALL INTERIOR DOORS SIZE + 2" TO WIDTH x 82 1/2" HIGH	
R.O. POCKET DOOR 72" DOOR WIDTH + (1) x 85" HIGH	

* DENOTES OPENING MEETS
EGRESS REQUIREMENTS



DETAIL "A"



ALL WALL DIMENSIONS ARE FACE TO FACE OF STUDS
ALL INTERIOR WALLS ARE 5/8" GYPSUM BOARD
BATHBAT TUBS ARE FINISHED TO OUTSIDE AIR
DOORS 68 1/8" TO CLEAR OPENING
ALL BRICK LAYOUT MEASUREMENTS ARE 4"

