

OPTIONS: SEE PAGE NO. 2



FRONT ELEVATION

TK CONSTRUCTORS	DATE: October 11, 2011	MODEL: CUSTOM	PAGE NO.: 1C
	JOB NO.: 112-11-0093	VER:	DRAWING BY: SBS
		SCALE: 1/8" = 1 FT.	

FIRST FLOOR PLAN

SILVERLINE WINDOW SCHEDULE
- TWO STORY PLAN - (H)

SYTL	SILVERLINE MODEL	R.O. SIZE	IN LIBR OF ANDERSEN
SA	3/2 x 3/0	38 1/2" x 36 1/2"	3030
SB	3/2 x 4/0	38 1/2" x 48 1/2"	3040
SC	3/0 x 4/6	38 1/4" x 51 1/4"	3048
HEIGHT RESTRICTED AREAS ONLY - 4XOT SIDERS			
SD	3/2 x 5/0	38 1/2" x 60 1/2"	3048
SE	3/2 x 5/6	38 1/2" x 66 1/2"	3056
SE	3/2 x 6/0	38 1/2" x 72 1/2"	3060
SF	3/2 x 5/0 - 2	76" x 60 1/2"	3048 MULL
BG	3/2 x 5/6 - 2	76" x 66 1/2"	3056 MULL
SH	3/2 x 6/0 - 2	76" x 72 1/2"	3060 MULL

SILVERLINE VINYL SLIDING 2 PANEL DOOR 60 x 66 - R.O. 72 1/8" x 60 1/2"

3'-0" FRONT DOOR
R.O. 38 3/8" x 82 1/2"

3'-0" FRONT DOOR WITH (1) SIDELITE
R.O. 61 7/8" x 82 1/2"

3'-0" FRONT DOOR WITH (2) SIDELITES
R.O. 65 3/8" x 82 1/2"

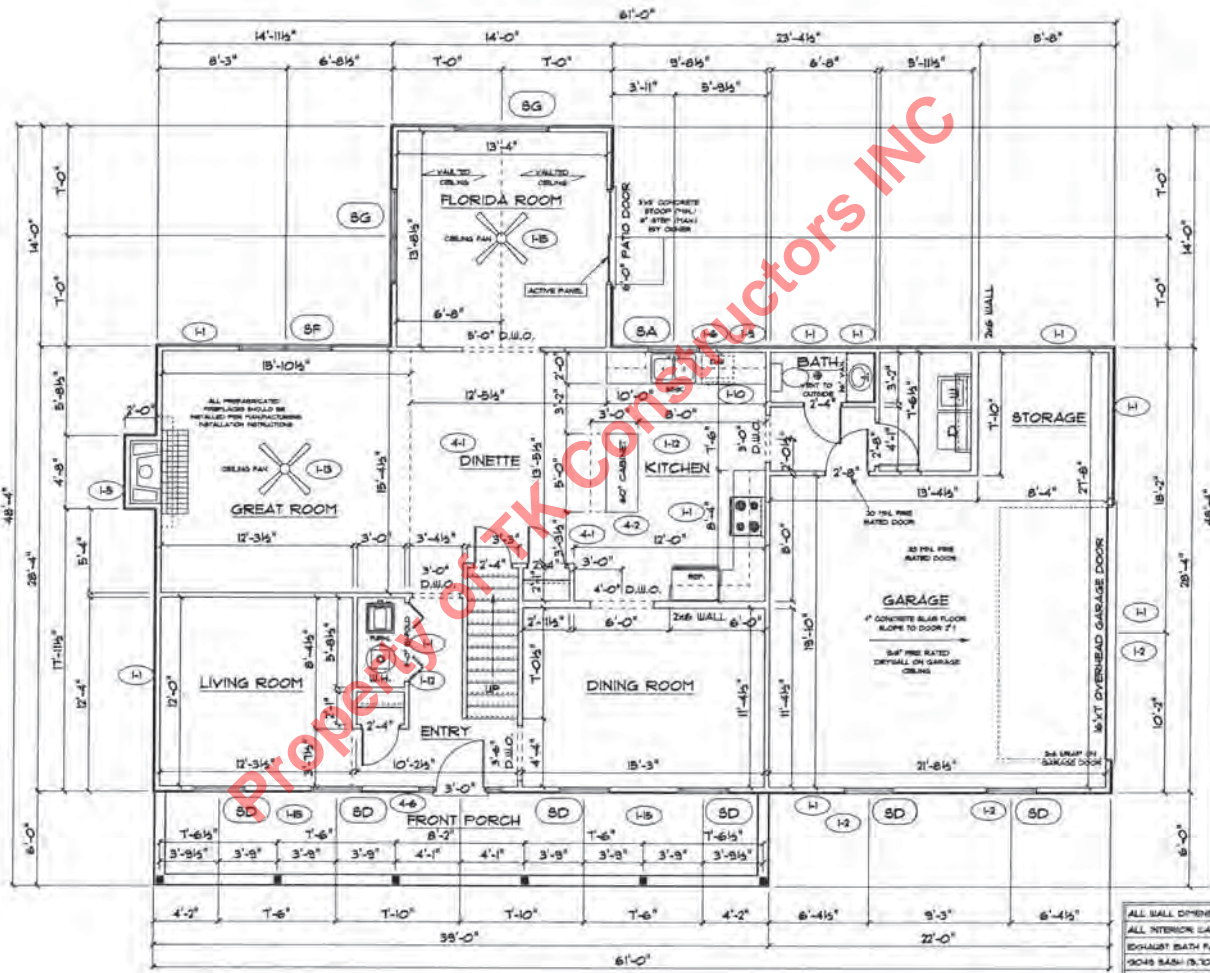
R.O. FOR BI-FOLD DOORS USING DRYWALL JAMB FACING = 1/4" x DOOR SIZE

R.O. FOR BYPASS DOORS USING DRYWALL JAMB FACING MAKE SAME AS BOTH DOORS ADDED TOGETHER

ALL INTERIOR DOORS
SIZE: 2" TO WIDTH x 82 1/2" HIGH

R.O. POCKET DOOR
(2) DOOR WIDTH x 7" x 85" HIGH

** DENOTES OPENING MEETS EGRESS REQUIREMENTS



ALL WALL DIMENSIONS ARE FACE TO FACE OF STUDS
ALL INTERIOR WALLS ARE 1/2" UNLESS NOTED!
EXHAUST FANS ARE VENTED TO OUTSIDE AIR
DOORS SHALL BE TO RIGHT OF CLEAR OPENING!
ALL BRICK LAYOUT MEASUREMENTS ARE 4"



FIRST FLOOR SQ.FT.	1,409
SECOND FLOOR SQ.FT.	1,074
TOTAL LIVING SQ.FT.	2,483
GARAGE	515
TOTAL SQ.FT.	2,998
EXCLUDING PORCH	234

**SILVERLINE WINDOW SCHEDULE
- TWO STORY PLAN - (H)**

SYTL	SILVERLINE MODEL	R.O. SIZE	IN LIBR. OF ANDERSEN
BA	3/2 x 3/0	38 1/2" x 36 1/2"	3030
BB	3/2 x 4/0	38 1/2" x 48 1/2"	3040
SCE	3/0 x 4/6	38 1/4" x 37 1/4"	3045
HEIGHT RESTRICTED AREAS ONLY - 4907 SERIES			
BC	3/2 x 3/0	38 1/2" x 60 1/2"	3045
BD	3/2 x 5/6	38 1/2" x 66 1/2"	3086
BE	3/2 x 6/0	38 1/2" x 72 1/2"	3080
BF	3/2 x 5/0 - 2	36" x 60 1/2"	3045 MULL
BG	3/2 x 5/6 - 2	36" x 66 1/2"	3086 MULL
BH	3/2 x 6/0 - 2	36" x 72 1/2"	3080 MULL

SILVERLINE VINYL SLIDING 2 PANEL DOOR 60 x 66 - R.O. 73 1/8" x 80 1/2"

3'-0" FRONT DOOR
R.O. 38 3/8" x 82 1/2"

3'-0" FRONT DOOR WITH (1) SIDELITE
R.O. 31 7/8" x 82 1/2"

3'-0" FRONT DOOR WITH (2) SIDELITES
R.O. 65 3/8" x 82 1/2"

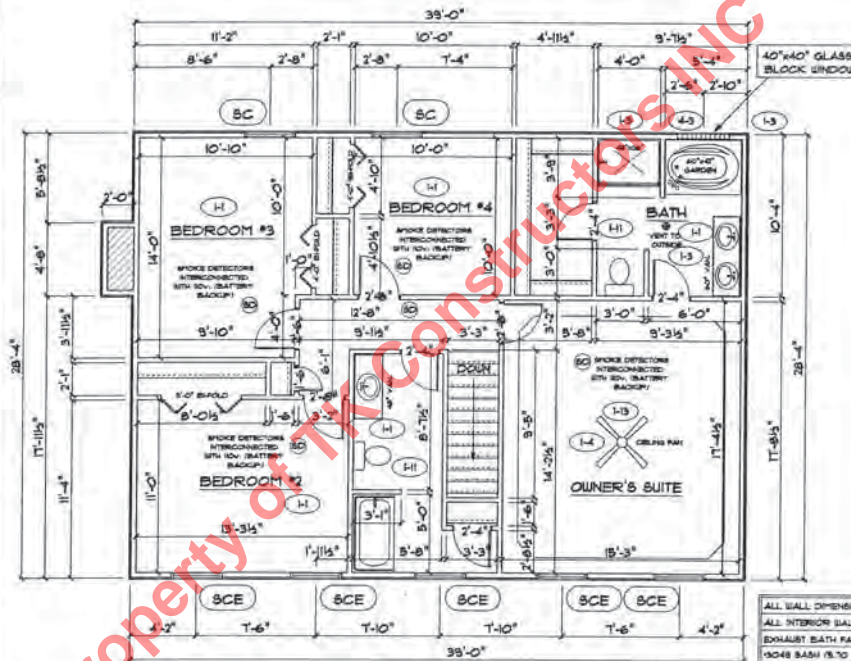
R.O. FOR BI-FOLD DOORS USING DRYWALL JAMB FACING = 1/4" x DOOR SIZE

R.O. FOR BYPASS DOORS USING DRYWALL JAMB FACING MAKE SAME AS BOTH DOORS ADDED TOGETHER

ALL INTERIOR DOORS
SIZE - 2' TO WIDTH x 82 1/2" HIGH

R.O. POCKET DOOR
(2) DOOR WIDTH + 17" x 88" HIGH

* - DENOTES OPENING HEIGHTS REQUIREMENTS



SECOND FLOOR PLAN

ALL WALL DIMENSIONS ARE FACE TO FACE OF STUD
ALL INTERIOR WALLS ARE 3/4" UNLESS NOTED
EXHAUST BATH FANS ARE VENTED TO OUTSIDE AIR
KITCHEN SINK IS TO SOFT. OF CLEAR OPENING
ALL BRICK LAYOUT MEASUREMENTS ARE 4"