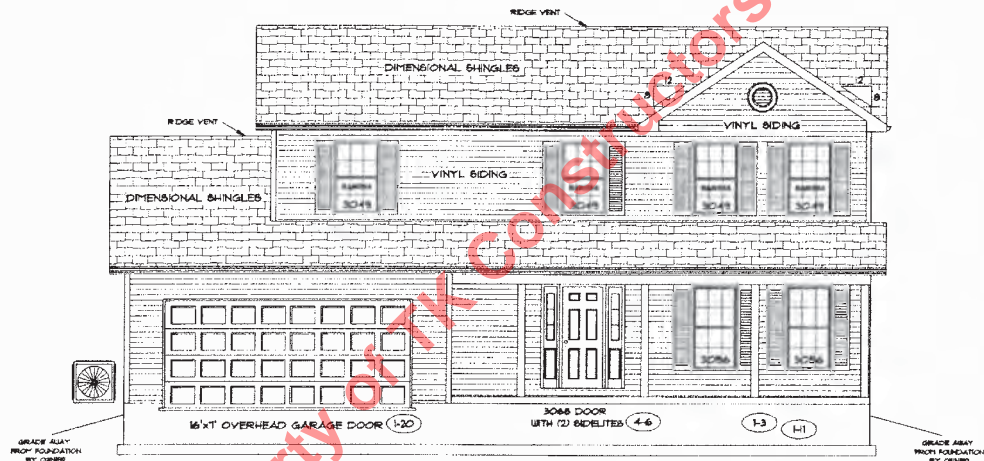


OPTIONS - SEE PAGE NO. 2



FRONT ELEVATION

PAGE NO: 10
MODEL: BEAUMONT
ADDENDUM 1
DRAWING BY: SEE
SCALE: 1/8" IN = 1 FT.



DATE: March 27, 2012
JOB NO.: 111-12-0005

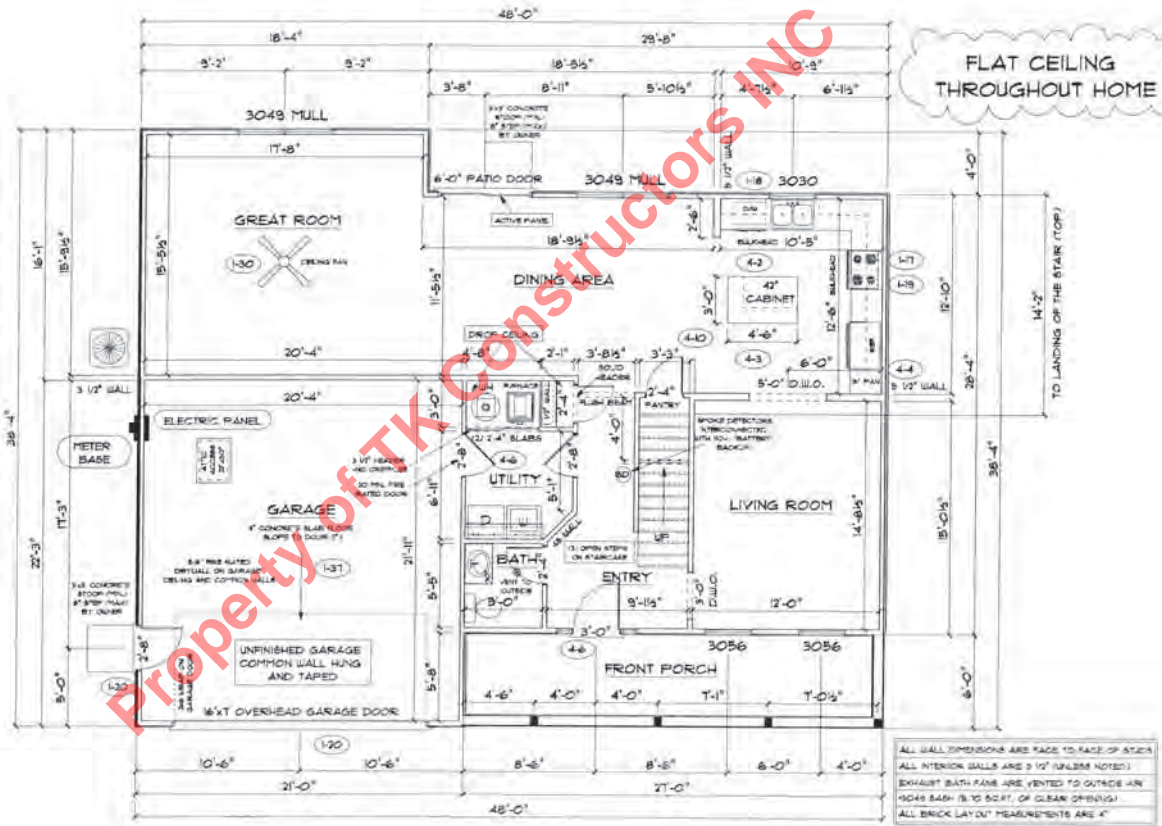
TK CONSTRUCTORS

FIRST FLOOR PLAN

ANDERSEN WINDOW SCHEDULE
- 200 SERIES - (4-8)

ANDERSEN MODEL NO.	R.O. SIZE
3030	36" x 36"
3040	36" x 48"
3049*	36" x 51"
3056*	36" x 66"
3060*	36" x 72"
3049 MULL*	73" x 51"
3056 MULL*	73" x 66"
3060 MULL*	73" x 72"

- ANDERSEN SLIDING DOOR
R.O. 72 3/4" x 82 1/8"
- 3'-0" FRONT DOOR
R.O. 38 3/8" x 82 1/2"
- 3'-0" FRONT DOOR WITH (1) SIDELITE
R.O. 51 1/8" x 82 1/2"
- 3'-0" FRONT DOOR WITH (2) SIDELITES
R.O. 65 3/8" x 82 1/2"
- R.O. FOR BI-FOLD DOORS USING DRYWALL
JAMB FACING = 1/4" + DOOR SIZE
- R.O. FOR BY-PASS DOORS USING DRYWALL
JAMB FACING MAKE SAME AS BOTH DOORS
ADDED TOGETHER
- ALL INTERIOR DOORS
SIZE = 2" TO WIDTH x 82 1/2" HIGH
- R.O. POCKET DOOR
(2x DOOR WIDTH + 1") x 85" HIGH
- * - DENOTES OPENING MEETS
EGRESS REQUIREMENTS



SECOND FLOOR PLAN

FIRST FLOOR SQ.FT.	1,091
SECOND FLOOR SQ.FT.	993
TOTAL LIVING SQ.FT.	2,090
GARAGE	464
TOTAL SQ.FT.	2,554
EXCLUDING PORCH	160

ANDERSEN WINDOW SCHEDULE - 200 SERIES - 4-8	
ANDERSEN MODEL NO.	R.O. SIZE
3030	36" x 36"
3040	36" x 48"
3049	36" x 57"
3056	36" x 66"
3060	36" x 72"
3049 MULL.	73" x 57"
3056 MULL.	73" x 66"
3060 MULL.	73" x 72"
ANDERSEN SLIDING DOOR R.O. 72 3/4" x 82 1/8"	
3'-0" FRONT DOOR R.O. 36 3/8" x 82 1/2"	
3'-0" FRONT DOOR WITH (1) SIDELITE R.O. 51 1/8" x 82 1/2"	
3'-0" FRONT DOOR WITH (2) SIDELITES R.O. 65 3/8" x 82 1/2"	
R.O. FOR BI-FOLD DOORS USING DRYWALL JAMB FACING + 1/4" + DOOR SIZE	
R.O. FOR BYPASS DOORS USING DRYWALL JAMB FACING MAKE SAME AS BOTH DOORS ADDED TOGETHER	
ALL INTERIOR DOORS SIZE + 2" TO WIDTH x 82 1/2" HIGH	
R.O. POCKET DOOR 72" DOOR WIDTH + 7" x 86" HIGH	

1 - DENOTES OPENING MEETS EGRESS REQUIREMENTS

