

NOTE: STOOP, APRON, AND DRIVE BY OWNER

FRONT ELEVATION

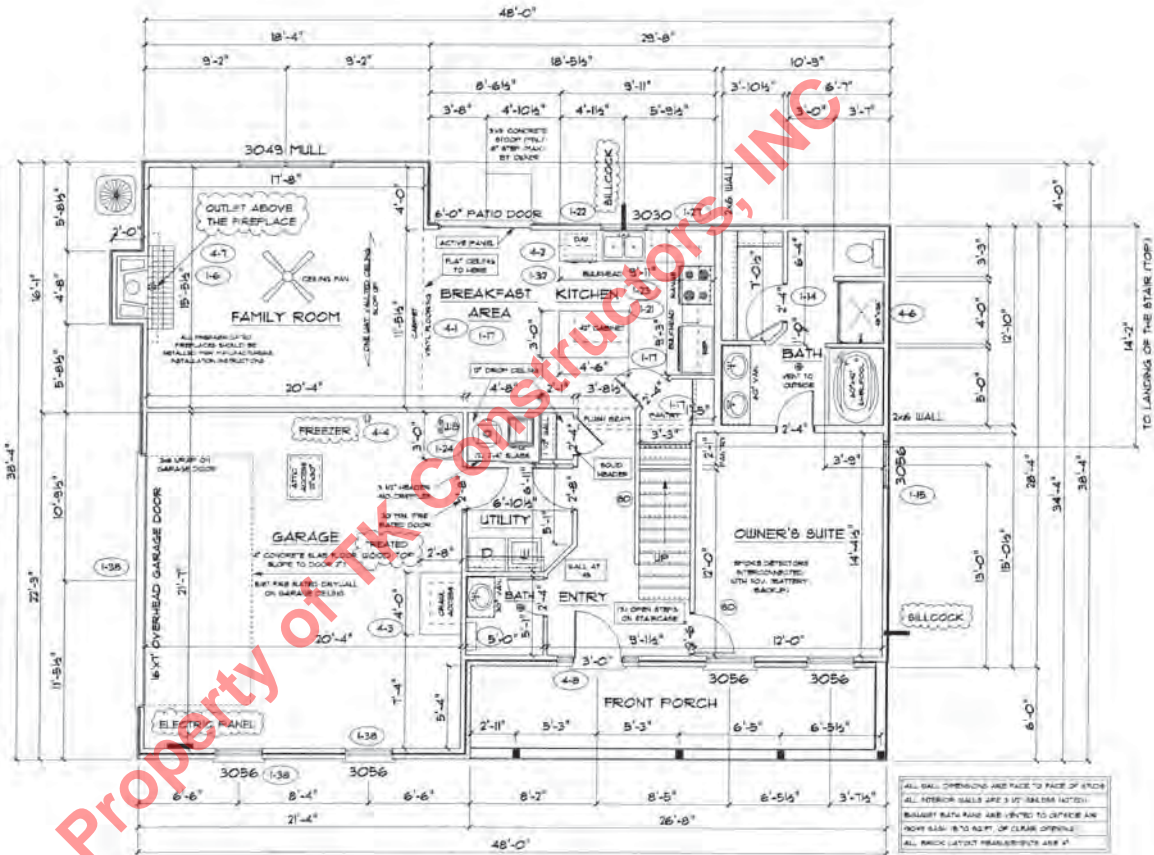
Property of TK Constructors, INC



FLOOR PLAN

ANDERSEN WINDOW SCHEDULE - 200 SERIES -	
ANDERSEN MODEL NO.	R.O. SIZE
3030	36" x 36"
3040	36" x 48"
3049*	36" x 51"
3056*	36" x 66"
3060*	36" x 72"
3049 MULL*	13" x 51"
3056 MULL*	13" x 66"
3060 MULL*	13" x 72"
ANDERSEN SLIDING DOOR R.O. 72 3/4" x 82 7/8"	
3'-0" FRONT DOOR R.O. 36 3/8" x 82 1/2"	
3'-0" FRONT DOOR WITH (U) SIDELITE R.O. 51 1/8" x 82 1/2"	
3'-0" FRONT DOOR WITH (U) SIDELITES R.O. 65 3/8" x 82 1/2"	
R.O. FOR BI-FOLD DOORS USING DRYWALL JAMB FACING = 1/4" + DOOR SIZE	
R.O. FOR BYPASS DOORS USING DRYWALL JAMB FACING MAKE SAME AS BOTH DOORS ADDED TOGETHER	
ALL INTERIOR DOORS SIZE = 2" TO WIDTH x 82 1/2" HIGH	
R.O. POCKET DOOR 12" DOOR WIDTH + 1" x 85" HIGH	

\* - DENOTES OPENING MEETS  
EGRESS REQUIREMENTS



H-stand with meter base  
(ELECTRIC PANEL IN FRONT  
CORNER OF GARAGE)

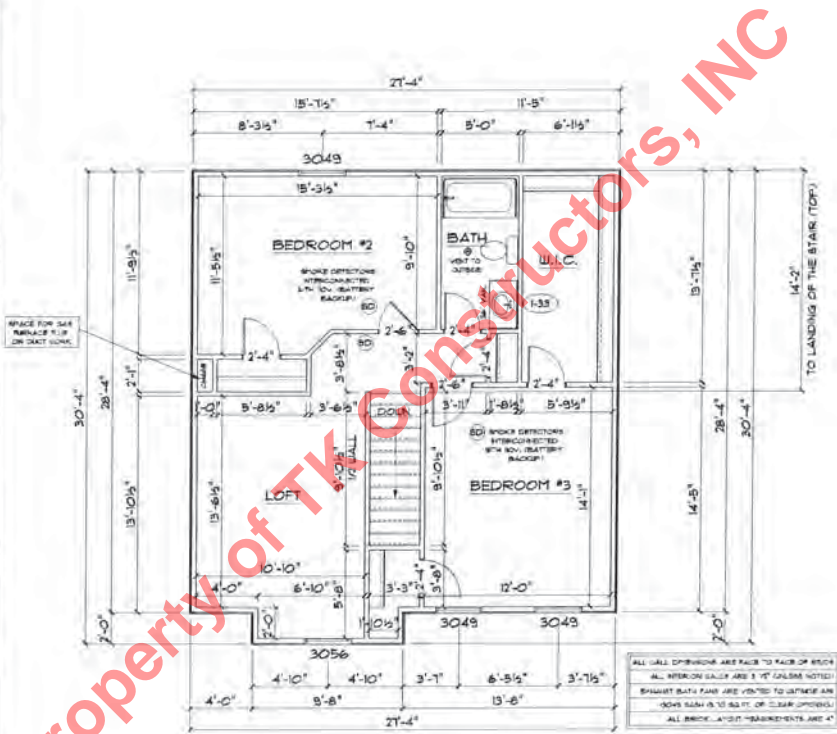


SECOND FLOOR PLAN

FIRST FLOOR SQ.FT.	1,091
SECOND FLOOR SQ.FT.	793
TOTAL LIVING SQ.FT.	1,890
GARAGE	464
TOTAL SQ.FT.	2,354
EXCLUDING PORCH	160

ANDERSEN WINDOW SCHEDULE - 200 SERIES -	
ANDERSEN MODEL NO.	R.O. SIZE
3030	36" x 36"
3040	36" x 48"
3049*	36" x 51"
3056*	36" x 66"
3060*	36" x 72"
3049 MULL*	13" x 51"
3056 MULL*	13" x 66"
3060 MULL*	13" x 72"
ANDERSEN SLIDING DOOR R.O. 72 3/4" x 82 1/8"	
3'-0" FRONT DOOR R.O. 38 3/8" x 82 1/2"	
3'-0" FRONT DOOR WITH (1) SIDELITE R.O. 51 1/8" x 82 1/2"	
3'-0" FRONT DOOR WITH (2) SIDELITES R.O. 65 3/8" x 82 1/2"	
R.O. FOR BI-FOLD DOORS USING DRYWALL JAMB FACING + 1/4" + DOOR SIZE	
R.O. FOR BYPASS DOORS USING DRYWALL JAMB FACING MAKE SAME AS BOTH DOORS ADDED TOGETHER	
ALL INTERIOR DOORS SIZE + 2" TO WIDTH x 82 1/2" HIGH	
R.O. POCKET DOOR (2x DOOR WIDTH + 7") x 85" HIGH	

\* - DENOTES OPENING MEETS  
ES&RS REQUIREMENTS



Property of TK Constructors, INC



DATE: May 15, 2012

TK CONSTRUCTORS  
AUSTIN

JOB NO: 111-12-0016