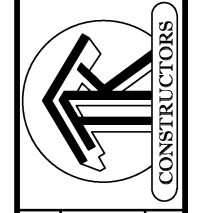


FRONT ELEVATION (1-37)

PROPERTY OF TK CONSTRUCTORS, INC

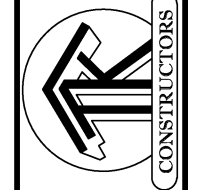
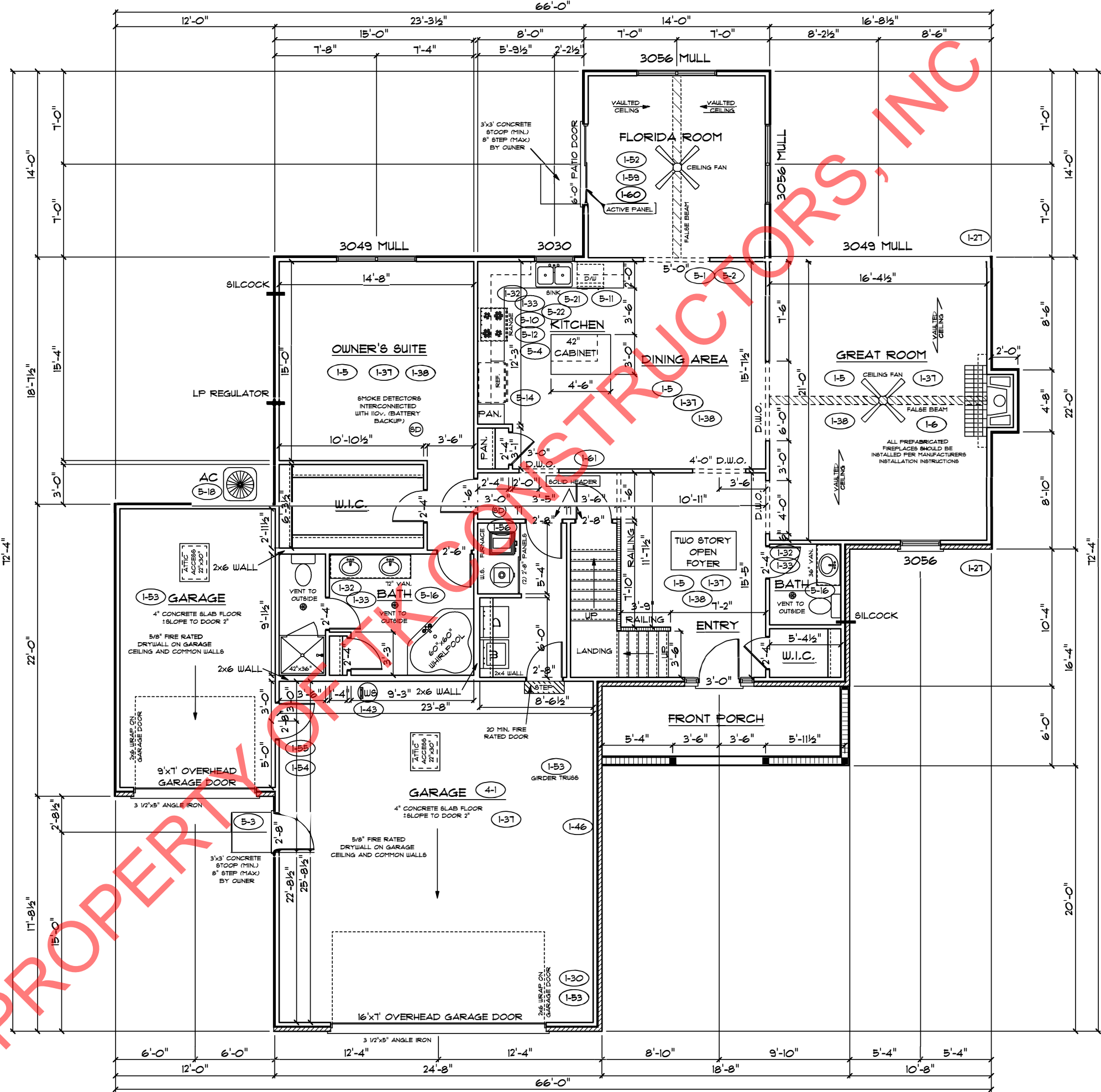


FIRST FLOOR PLAN (4-1)

| ANDERSEN WINDOW SCHEDULE - 200 SERIES - | |
|--|-----------|
| ANDERSEN MODEL NO. | R.O. SIZE |
| 3030 | 36" x 36" |
| 3040 | 36" x 48" |
| 3049* | 36" x 57" |
| 3056* | 36" x 66" |
| 3060* | 36" x 72" |
| 3049 MULL* | 73" x 57" |
| 3056 MULL* | 73" x 66" |
| 3060 MULL* | 73" x 72" |
| ANDERSEN SLIDING DOOR R.O. 72 3/4" x 82 1/8" | |
| 3'-0" FRONT DOOR R.O. 38 3/8" x 82 1/2" | |
| 3'-0" FRONT DOOR WITH (1) SIDELITE R.O. 51 7/8" x 82 1/2" | |
| 3'-0" FRONT DOOR WITH (2) SIDELITES R.O. 65 3/8" x 82 1/2" | |
| R.O. FOR BI-FOLD DOORS USING DRYWALL JAMB FACING = 1 1/4" + DOOR SIZE x (81 1/2") | |
| R.O. FOR BYPASS DOORS USING DRYWALL JAMB FACING MAKE SAME AS BOTH DOORS ADDED TOGETHER | |
| ALL INTERIOR DOORS SIZE + 2" TO WIDTH x 82 1/2" HIGH | |
| R.O. POCKET DOOR (2x DOOR WIDTH + 1") x 85" HIGH | |

* - DENOTES OPENING MEETS
EGRESS REQUIREMENTS

ALL WALL DIMENSIONS ARE FACE TO FACE OF STUDS
ALL INTERIOR WALLS ARE 3 1/2" (UNLESS NOTED)
EXHAUST BATH FANS ARE VENTED TO OUTSIDE AIR
(3049 BASH (B.T.O. SQ.FT. OF CLEAR OPENING)
ALL BRICK LAYOUT MEASUREMENTS ARE 4"

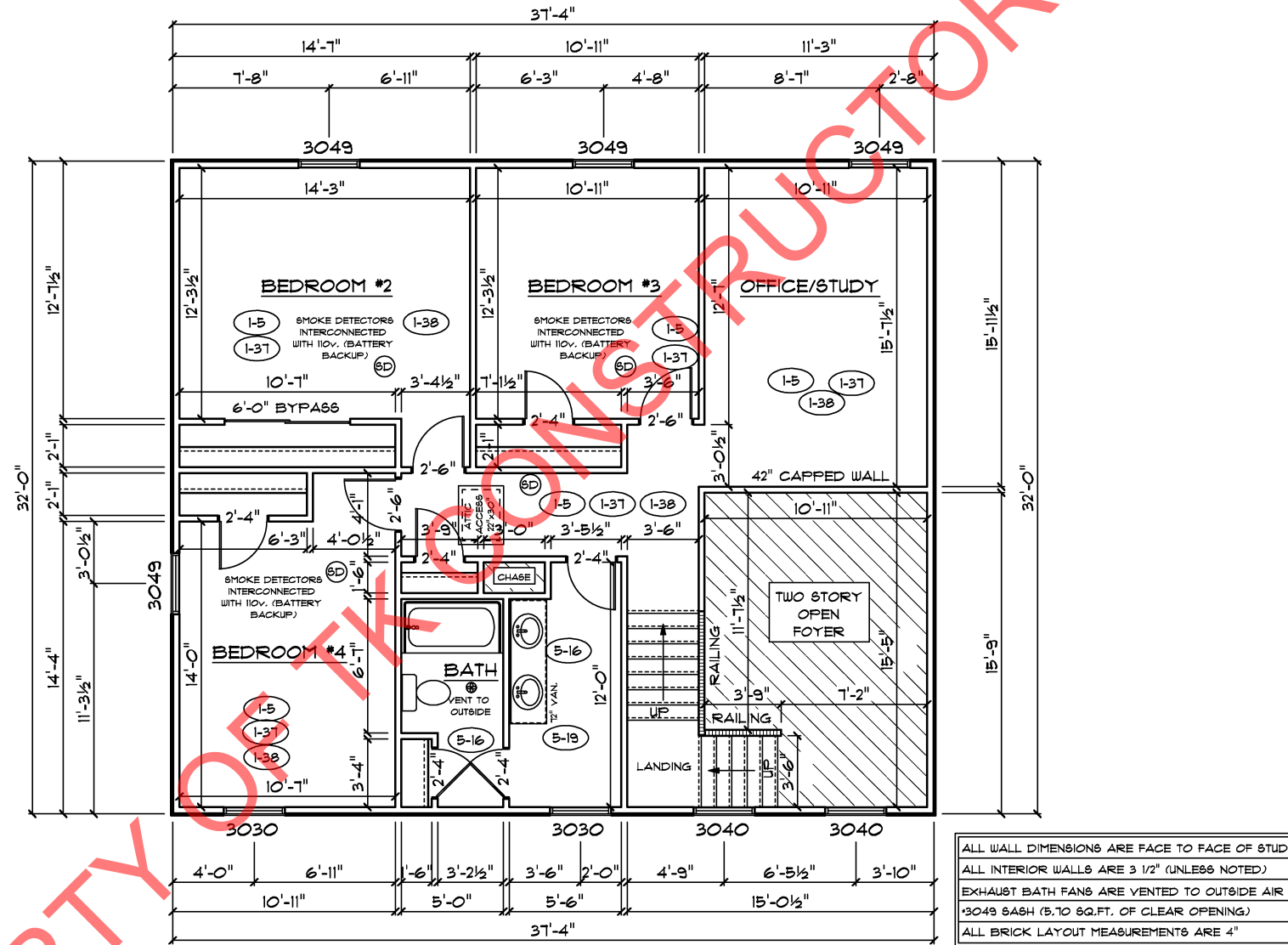


SECOND FLOOR PLAN

| | |
|---------------------|-------|
| FIRST FLOOR SQ.FT. | 1,832 |
| SECOND FLOOR SQ.FT. | 985 |
| TOTAL LIVING SQ.FT. | 2,817 |
| GARAGE | 905 |
| TOTAL SQ.FT. | 3,722 |
| EXCLUDING PORCH | 112 |

| ANDERSEN WINDOW SCHEDULE - 200 SERIES - | |
|--|-----------|
| ANDERSEN MODEL NO. | R.O. SIZE |
| 3030 | 36" x 36" |
| 3040 | 36" x 48" |
| 3049* | 36" x 57" |
| 3056* | 36" x 66" |
| 3060* | 36" x 72" |
| 3049 MULL* | 73" x 57" |
| 3056 MULL* | 73" x 66" |
| 3060 MULL* | 73" x 72" |
| ANDERSEN SLIDING DOOR R.O. 12 3/4" x 82 7/8" | |
| 3'-0" FRONT DOOR R.O. 38 3/8" x 82 1/2" | |
| 3'-0" FRONT DOOR WITH (1) SIDELITE R.O. 51 7/8" x 82 1/2" | |
| 3'-0" FRONT DOOR WITH (2) SIDELITES R.O. 65 3/8" x 82 1/2" | |
| R.O. FOR BI-FOLD DOORS USING DRYWALL JAMB FACING = 1 1/4" + DOOR SIZE x (81 1/2") | |
| R.O. FOR BYPASS DOORS USING DRYWALL JAMB FACING MAKE SAME AS BOTH DOORS ADDED TOGETHER | |
| ALL INTERIOR DOORS SIZE + 2" TO WIDTH x 82 1/2" HIGH | |
| R.O. POCKET DOOR (2x DOOR WIDTH + 1") x 85" HIGH | |

* - DENOTES OPENING MEETS
EGRESS REQUIREMENTS



ALL WALL DIMENSIONS ARE FACE TO FACE OF STUDS
ALL INTERIOR WALLS ARE 3/2" (UNLESS NOTED)
EXHAUST BATH FANS ARE VENTED TO OUTSIDE AIR
*3049 SASH (5. TO 6Q.FT. OF CLEAR OPENING)
ALL BRICK LAYOUT MEASUREMENTS ARE 4"

