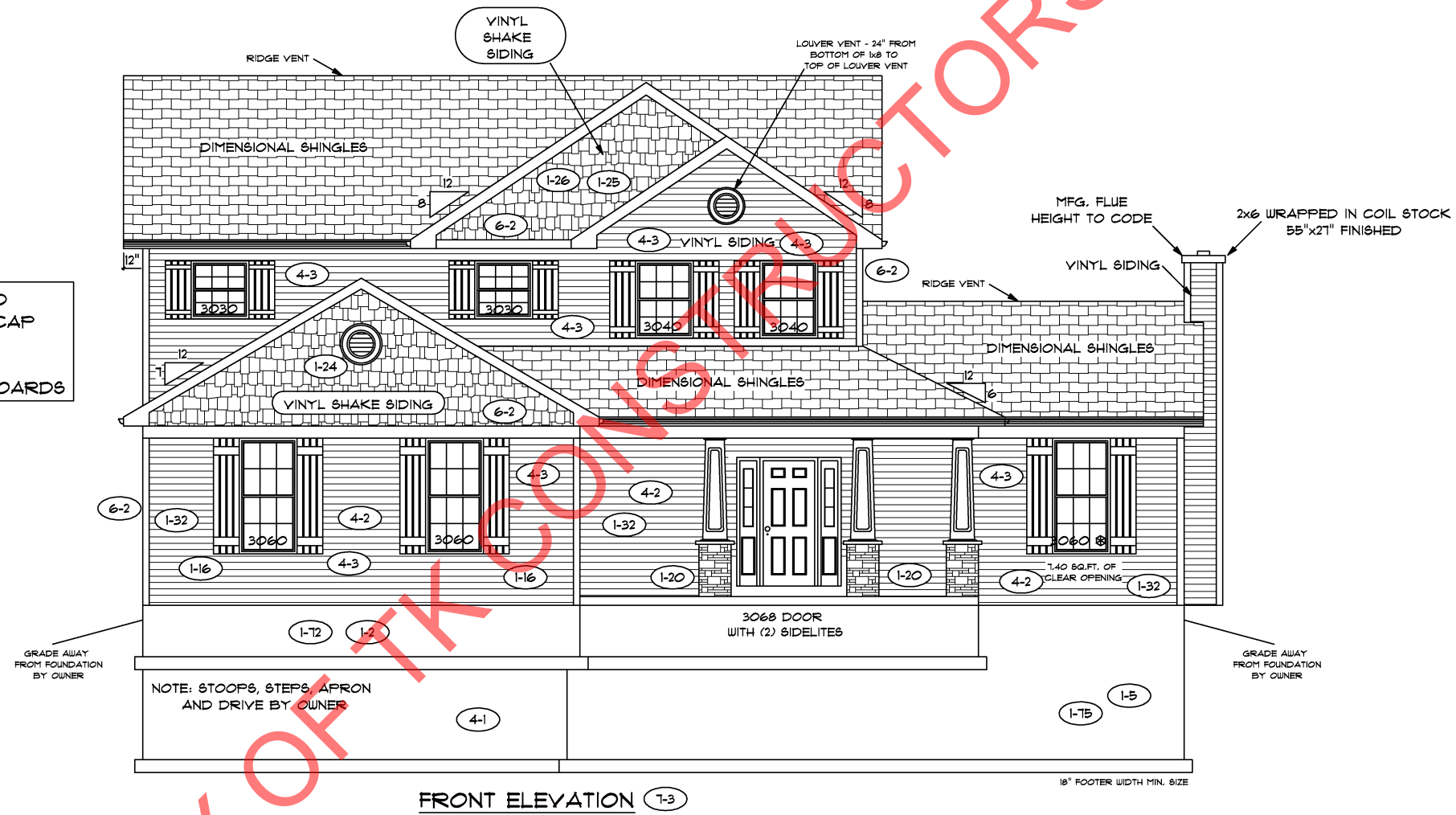




HOUSE WRAP MUST BE NAILED
 IN THE 30" GRID PATTERN. CAP
 NAILS ONLY
 VINYL FLASHING ON BAND BOARDS



FRONT ELEVATION (1-3)

CUSTOMER WOULD LIKE TO HAVE THE HOUSE SIDING CORNER PIECES AND J-CHANNEL AROUND THE WINDOWS IN WHITE. CUSTOMER WOULD LIKE A 2"x8" (WRAPPED IN WHITE) UNDER THE SHAKE SIDING SECTION ON THE GARAGE GABLE AND A 2"x8" RUNNING THE LENGTH (WRAPPED IN WHITE) ON THE FRONT OF THE HOUSE UNDER THE SOFFITT. ALSO, ADD FOR A 2"x6" (WRAPPED IN WHITE) BETWEEN THE (2) GABLES ON THE SECOND FLOOR TO SEPERATE THE SHAKE SIDING FROM THE VINYL SIDING

NOTE: STOOPS, STEPS, APRON AND DRIVE BY OWNER

18" FOOTER WIDTH MIN. SIZE

PROPERTY OF TK CONSTRUCTORS, INC

FIRST FLOOR PLAN (1-3)

ANDERSEN WINDOW SCHEDULE
- 200 SERIES -

ANDERSEN MODEL NO.	R.O. SIZE
3030	36" x 36"
3040	36" x 48"
3049*	36" x 57"
3056*	36" x 66"
3060*	36" x 72"
3049 MULL*	73" x 57"
3056 MULL*	73" x 66"
3060 MULL*	73" x 72"

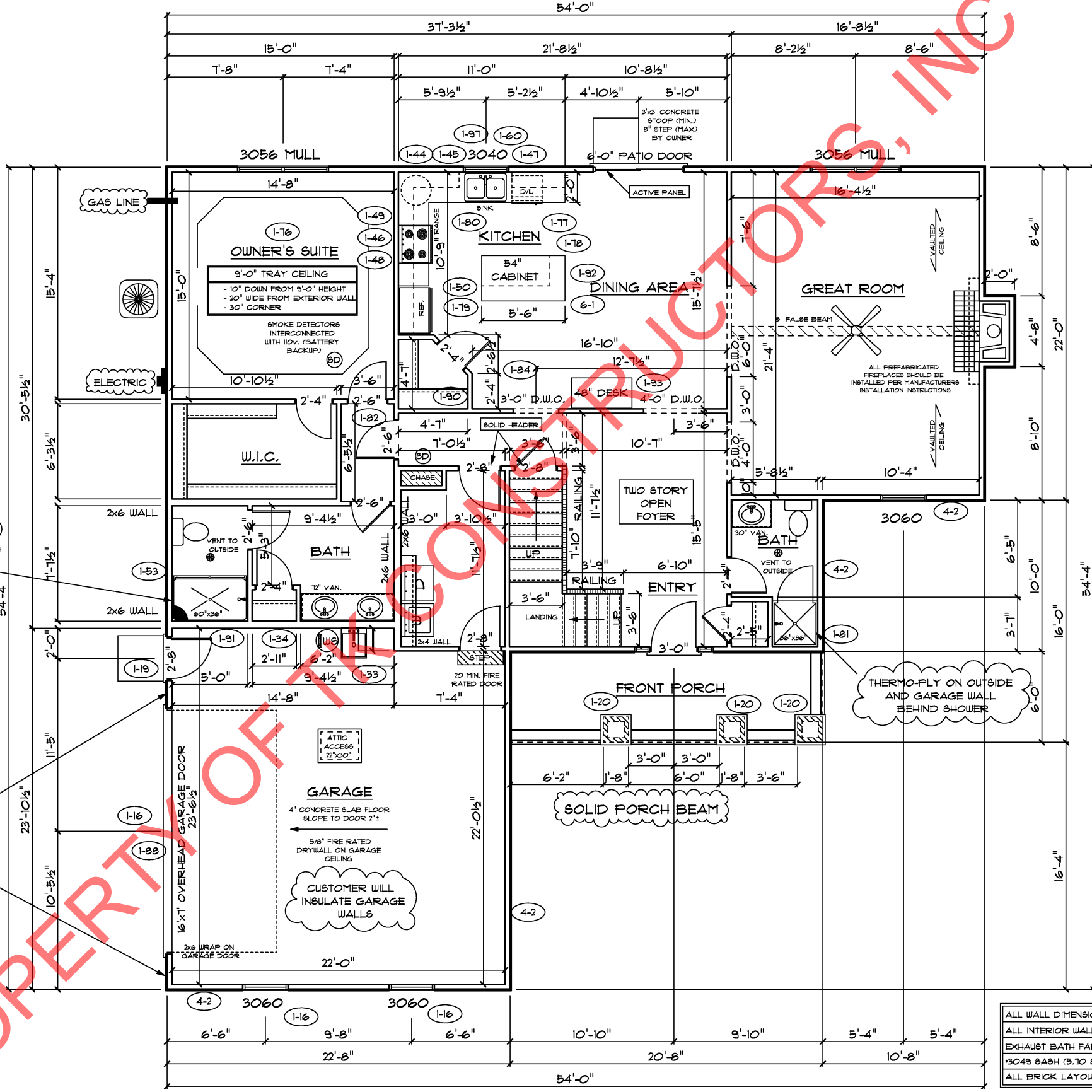
ANDERSEN SLIDING DOOR R.O. 72 3/4" x 82 1/8"
3'-0" FRONT DOOR R.O. 38 3/8" x 82 1/2"
3'-0" FRONT DOOR WITH (1) SIDELITE R.O. 51 7/8" x 82 1/2"
3'-0" FRONT DOOR WITH (2) SIDELITES R.O. 65 3/8" x 82 1/2"
R.O. FOR BI-FOLD DOORS USING DRYWALL JAMB FACING = 1 1/4" + DOOR SIZE x (81 1/2")
R.O. FOR BYPASS DOORS USING DRYWALL JAMB FACING MAKE SAME AS BOTH DOORS ADDED TOGETHER
ALL INTERIOR DOORS SIZE + 2" TO WIDTH x 82 1/2" HIGH
R.O. POCKET DOOR (2x DOOR WIDTH + 1") x 85" HIGH

9'-0" FIRST FLOOR
CEILING HEIGHT (1-32)

INCLUDES:
1. 4 1/4" BASEBOARDS IN LIEU OF 3 1/4"
2. 3060 WINDOWS IN LIEU OF 3056 WINDOWS
3. 3056 WINDOWS IN LIEU OF 3049 WINDOWS
4. DRYWALL WRAPPED OPENINGS 12" TALLER
5. 42" KITCHEN CABINETS (1-79)
6. 16'x7' GARAGE DOOR STANDARD

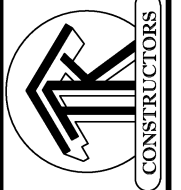
THERMO-PLY ON OUTSIDE
AND GARAGE WALL
BEHIND SHOWER

OSB NAIL PATTERN
INSPECTION
REQUIRED



ALL WALL DIMENSIONS ARE FACE TO FACE OF STUDS
ALL INTERIOR WALLS ARE 3 1/2" (UNLESS NOTED)
EXHAUST BATH FANS ARE VENTED TO OUTSIDE AIR
3049 SASH (5.70 SQ.FT. OF CLEAR OPENING)
ALL BRICK LAYOUT MEASUREMENTS ARE 4"

PROPERTY OF TK CONSTRUCTORS, INC.

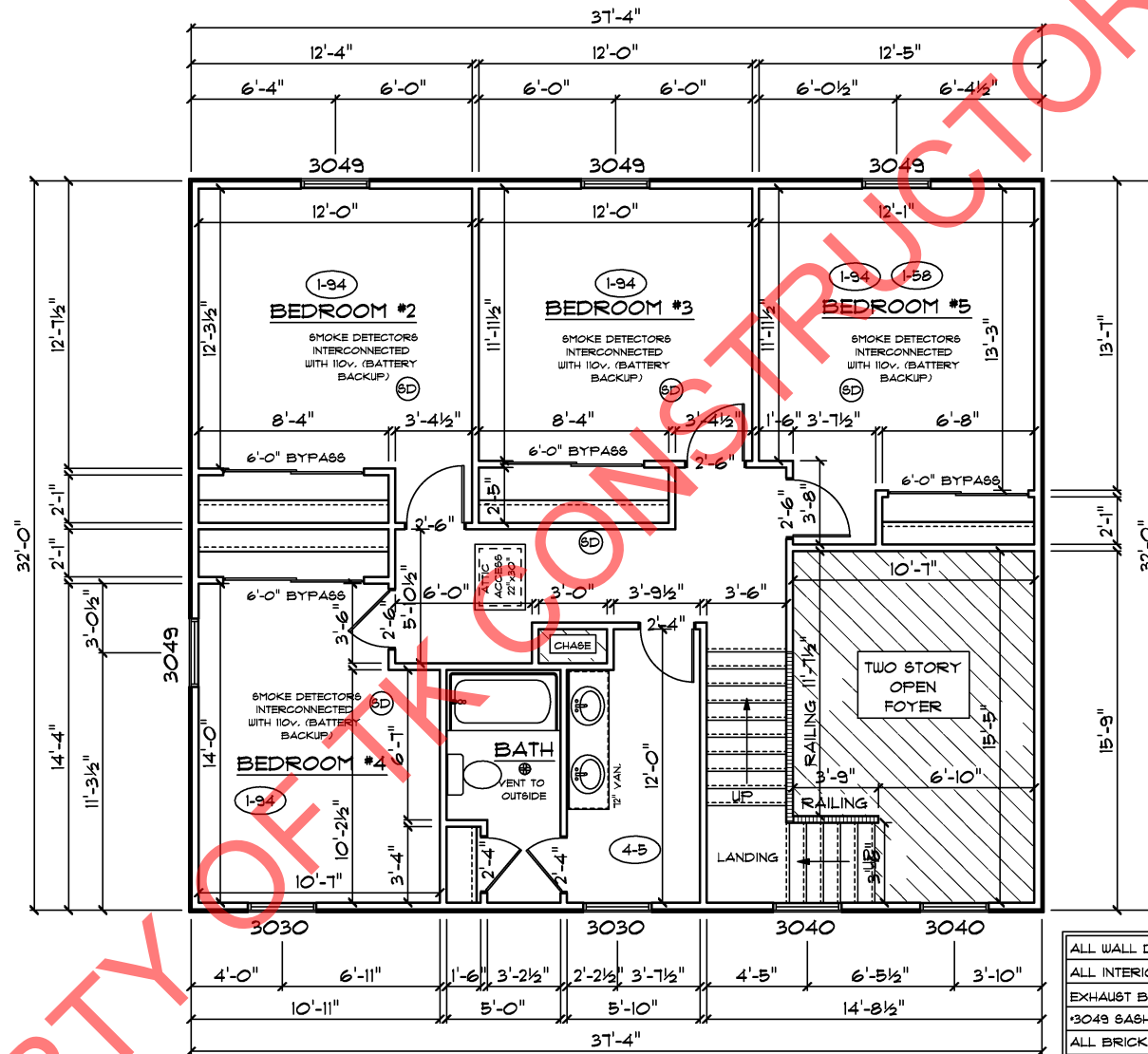


SECOND FLOOR PLAN 7-3

FIRST FLOOR SQ.FT.	1,613
SECOND FLOOR SQ.FT.	978
TOTAL LIVING SQ.FT.	2,591
GARAGE	528
TOTAL SQ.FT.	3,119
EXCLUDING PORCH	124

ANDERSEN WINDOW SCHEDULE - 200 SERIES -	
ANDERSEN MODEL NO.	R.O. SIZE
3030	36" x 36"
3040	36" x 48"
3049*	36" x 57"
3056*	36" x 66"
3060*	36" x 72"
3049 MULL*	73" x 57"
3056 MULL*	73" x 66"
3060 MULL*	73" x 72"
ANDERSEN SLIDING DOOR R.O. 12 3/4" x 82 7/8"	
3'-0" FRONT DOOR R.O. 38 3/8" x 82 1/2"	
3'-0" FRONT DOOR WITH (1) SIDELITE R.O. 51 1/8" x 82 1/2"	
3'-0" FRONT DOOR WITH (2) SIDELITES R.O. 65 3/8" x 82 1/2"	
R.O. FOR BI-FOLD DOORS USING DRYWALL JAMB FACING = 1 1/4" + DOOR SIZE x (81 1/2")	
R.O. FOR BYPASS DOORS USING DRYWALL JAMB FACING MAKE SAME AS BOTH DOORS ADDED TOGETHER	
ALL INTERIOR DOORS SIZE + 2" TO WIDTH x 82 1/2" HIGH	
R.O. POCKET DOOR (2x DOOR WIDTH + 1") x 85" HIGH	

* - DENOTES OPENING MEETS
EGRESS REQUIREMENTS



ALL WALL DIMENSIONS ARE FACE TO FACE OF STUDS
ALL INTERIOR WALLS ARE 3 1/2" (UNLESS NOTED)
EXHAUST BATH FANS ARE VENTED TO OUTSIDE AIR
3049 SASH (570 SQ.FT. OF CLEAR OPENING)
ALL BRICK LAYOUT MEASUREMENTS ARE 4"

