

OPTIONS - SEE PAGE NO. 2

PAGE NO. 1B

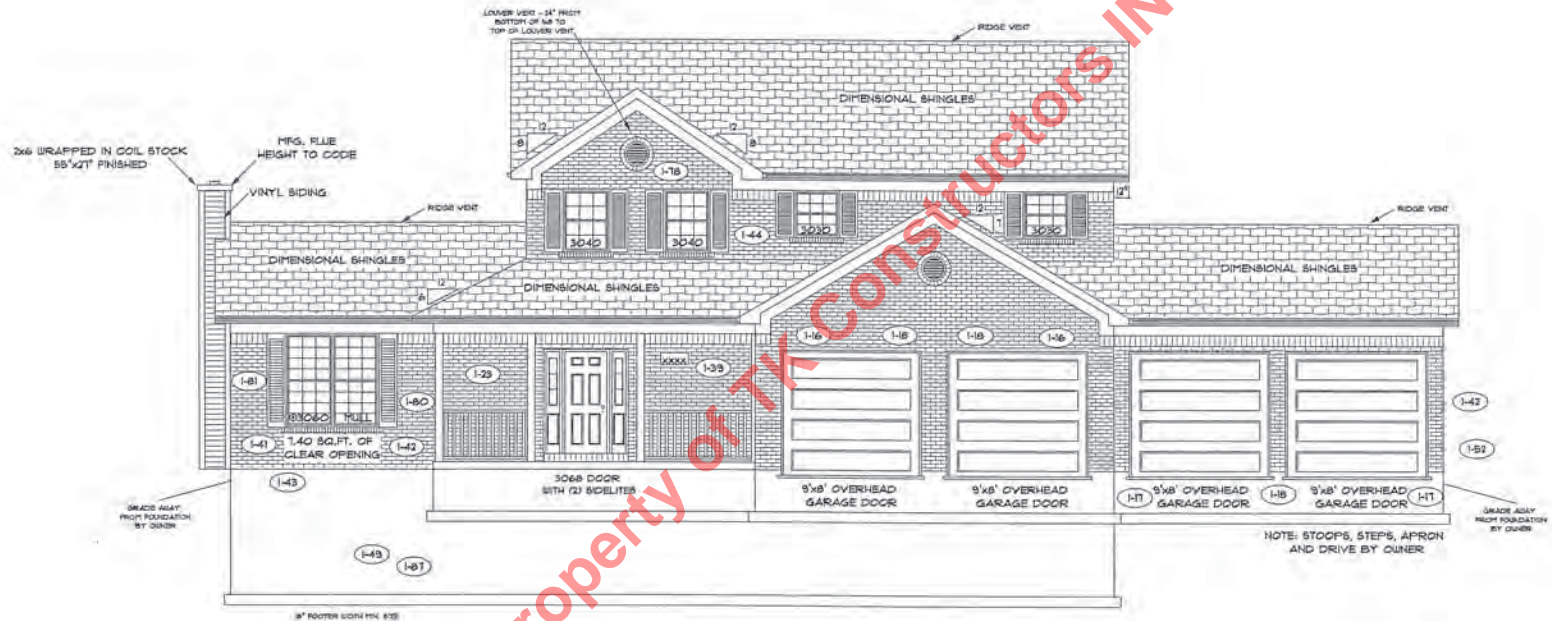
MODEL: AUGUSTA
VER: 11210
DRAWING BY: SES



DATE: May 11, 2011

JOB NO.: 113-11-0026

TK CONSTRUCTORS



FRONT ELEVATION

FIRST FLOOR PLAN

ANDERSEN WINDOWS

MODEL	R.O. SIZE
3030	36" x 36"
3040	36" x 48"
3049	36" x 51"
3056	36" x 66"
3060	36" x 72"
3049 MULL	13" x 51"
3056 MULL	13" x 66"
3060 MULL	13" x 72"

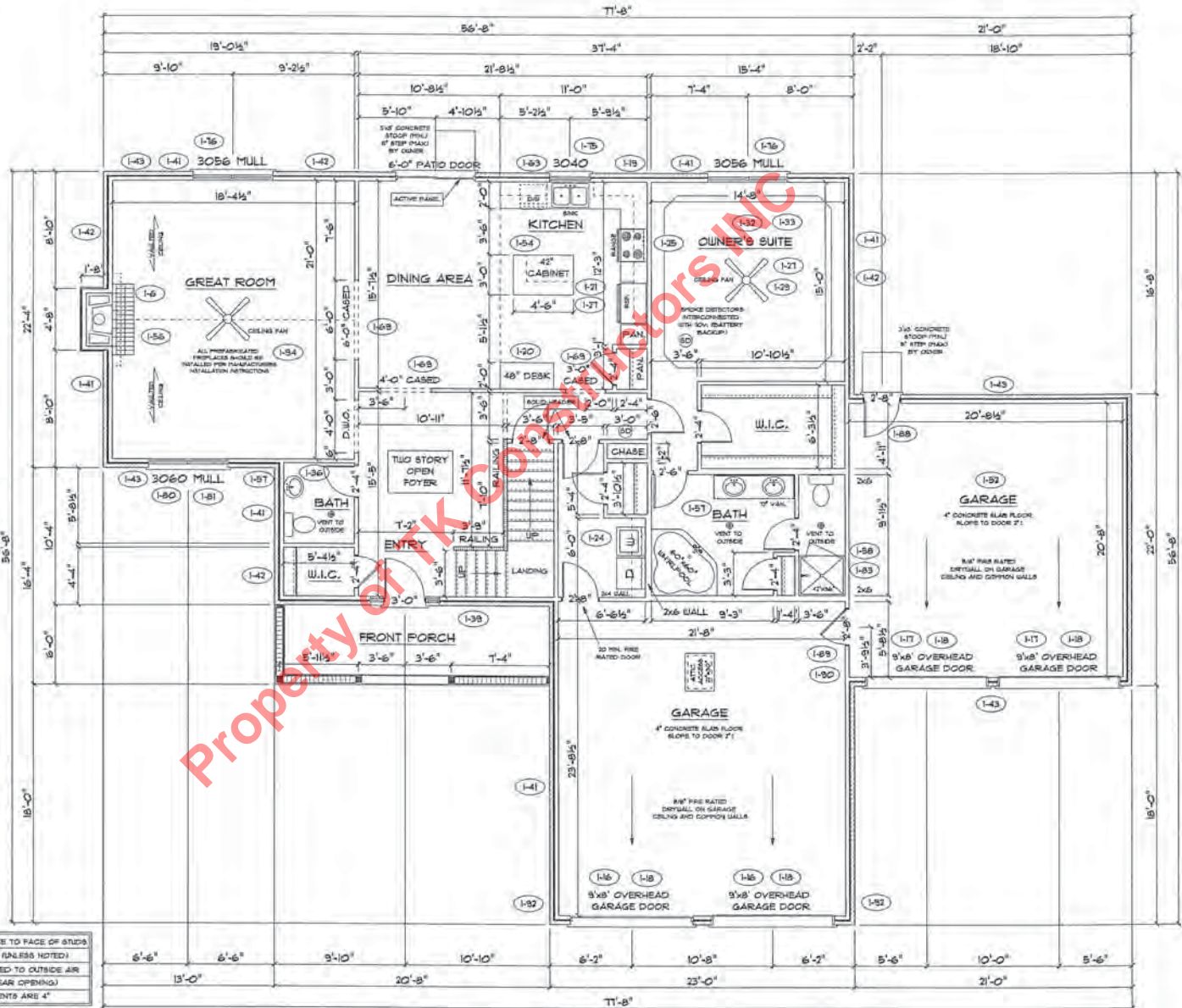
- ANDERSEN SLIDING DOOR
R.O. 12 3/4" x 82 1/8"
- 3/0 FRONT DOOR
R.O. 3'-2 1/2" x 82 1/2"
- 3/0 FRONT DOOR WITH (1) SIDE LIGHT
R.O. 4'-3 1/2" x 82"
- 3/0 FRONT DOOR WITH (2) SIDE LIGHTS
R.O. 5'-5" x 82"
- R.O. FOR BYFOLD DOORS USING DRY-WALL JAMB FACING IS 1 1/4" DOOR SIZE
- R.O. FOR BYPASS DOORS USING DRY-WALL JAMB FACING MAKE SAME AS BOTH DOORS ADDED TOGETHER
- ALL INTERIOR DOORS
SIZE + 2" TO WIDTH x 82 1/2" HIGH
- R.O. POCKET DOOR - 1/2" DOOR
WIDTH + 1" x 85" HIGH

9'-0" FIRST FLOOR CEILING HEIGHT (1-23)

INCLUDES-

- 4 1/4" BASEBOARDS IN LIEU OF 3 1/4"
- 3060 WINDOWS IN LIEU OF 3056 WINDOWS
- 3056 WINDOWS IN LIEU OF 3049 WINDOWS
- DRYWALL WRAPPED OPENINGS 1" TALLER
- 42" KITCHEN CABINETS (1-21)
- 9'x8' GARAGE DOORS (1-18)

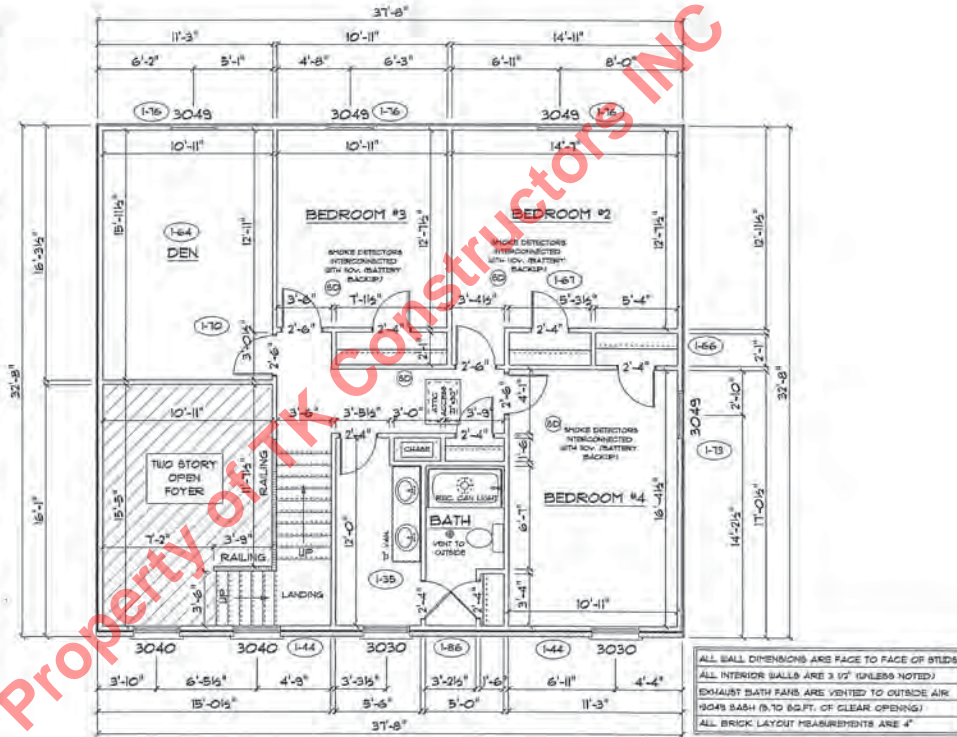
ALL WALL DIMENSIONS ARE FACE TO FACE OF STUDS
ALL INTERIOR WALLS ARE 3 1/2" (UNLESS NOTED)
EXHAUST BATH FANS ARE VENTED TO OUTSIDE AIR
(3049 BATH IS 10 60 FT. OF CLEAR OPENING)
ALL BRICK LAYOUT MEASUREMENTS ARE 4"



SECOND FLOOR PLAN

First Floor Sq.ft.	1,719
Second Floor Sq.ft.	1,021
Total Living Sq.ft.	2,740
Garage	1,014
Total Sq.ft.	3,754
Excluding Porch	124

ANDERSEN WINDOWS	
MODEL	R.O. SIZE
3030	36" x 36"
3040	36" x 48"
3045	36" x 57"
3056	36" x 66"
3060	36" x 72"
3049 MULL	13" x 51"
3056 MULL	13" x 66"
3060 MULL	13" x 72"
ANDERSEN SLIDING DOOR	
R.O. 12 3/4" x 82 7/8"	
3/0 FRONT DOOR	
R.O. 3'-2 1/2" x 82 1/2"	
3/0 FRONT DOOR WITH (1) SIDE LIGHT	
R.O. 4'-3 1/2" x 82"	
3/0 FRONT DOOR WITH (2) SIDE LIGHTS	
R.O. 5'-5" x 82"	
R.O. FOR BYFOLD DOORS USING DRY-WALL JAMB FACING IS 1 1/4" DOOR SIZE	
R.O. FOR BYPASS DOORS USING DRYWALL JAMB FACING MAKE SAME AS BOTH DOORS ADDED TOGETHER	
ALL INTERIOR DOORS	
SIZE - 2' TO WIDTH x 82 1/2" HIGH	
R.O. POCKET DOOR - 124 DOOR WIDTH + 1" x 88" HIGH	



ALL BALL DIMENSIONS ARE FACE TO FACE OF STUDS
 ALL INTERIOR BALLS ARE 3 1/2" (UNLESS NOTED)
 EXHAUST BATH FANS ARE VENTED TO OUTSIDE AIR
 ROOMS BASH (8.10 SQ. FT. OF CLEAR OPENING)
 ALL BRICK LAYOUT MEASUREMENTS ARE 4"

