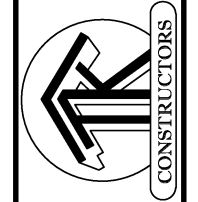


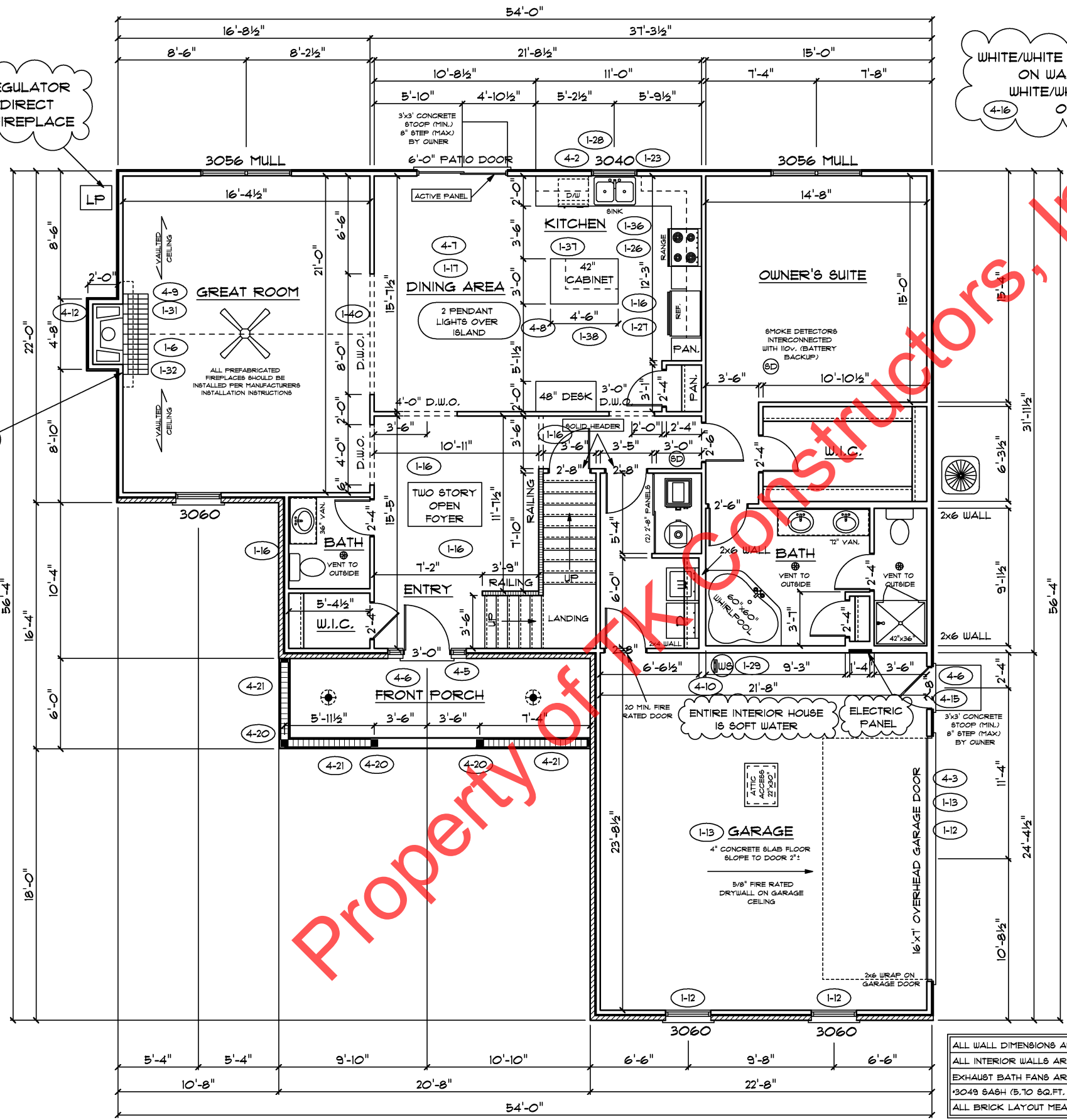
Property of TK Constructors, Inc.



L.P. REGULATOR FOR DIRECT VENT FIREPLACE

WHITE/WHITE INTERIOR FLAT PAINT ON WALLS AND CEILING  
WHITE/WHITE SEMI GLOSS ON THE TRIM

BRICK FIREPLACE HEARTH BUILT UP TO 13 3/4" TALL



FIRST FLOOR PLAN

ANDERSEN WINDOW SCHEDULE - 200 SERIES -

ANDERSEN MODEL NO.	R.O. SIZE
3030	36" x 36"
3040	36" x 48"
3049*	36" x 57"
3056*	36" x 66"
3060*	36" x 72"
3049 MULL*	73" x 57"
3056 MULL*	73" x 66"
3060 MULL*	73" x 72"

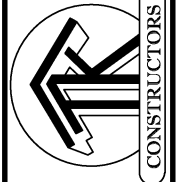
- ANDERSEN SLIDING DOOR  
R.O. 72 3/4" x 82 1/8"
- 3'-0" FRONT DOOR  
R.O. 38 3/8" x 82 1/2"
- 3'-0" FRONT DOOR WITH (1) SIDELITE  
R.O. 51 7/8" x 82 1/2"
- 3'-0" FRONT DOOR WITH (2) SIDELITES  
R.O. 65 3/8" x 82 1/2"
- R.O. FOR BI-FOLD DOORS USING DRYWALL  
JAMB FACING = 1 1/4" + DOOR SIZE x (81 1/2")
- R.O. FOR BYPASS DOORS USING DRYWALL  
JAMB FACING MAKE SAME AS BOTH DOORS  
ADDED TOGETHER
- ALL INTERIOR DOORS  
SIZE + 2" TO WIDTH x 82 1/2" HIGH
- R.O. POCKET DOOR  
(2x DOOR WIDTH + 1") x 85" HIGH

\* - DENOTES OPENING MEETS EGRESS REQUIREMENTS

9'-0" FIRST FLOOR CEILING HEIGHT (1-22)

- INCLUDES:
- 4 1/4" BASEBOARDS IN LIEU OF 3 1/4"
  - 3060 WINDOWS IN LIEU OF 3056 WINDOWS
  - 3056 WINDOWS IN LIEU OF 3049 WINDOWS
  - DRYWALL WRAPPED OPENINGS 12" TALLER
  - 42" KITCHEN CABINETS (1-39)
  - 16'x1' GARAGE DOOR STANDARD

ALL WALL DIMENSIONS ARE FACE TO FACE OF STUDS  
ALL INTERIOR WALLS ARE 3 1/2" (UNLESS NOTED)  
EXHAUST BATH FANS ARE VENTED TO OUTSIDE AIR  
\*3049 BASH (5,70 SQ.FT. OF CLEAR OPENING)  
ALL BRICK LAYOUT MEASUREMENTS ARE 4"

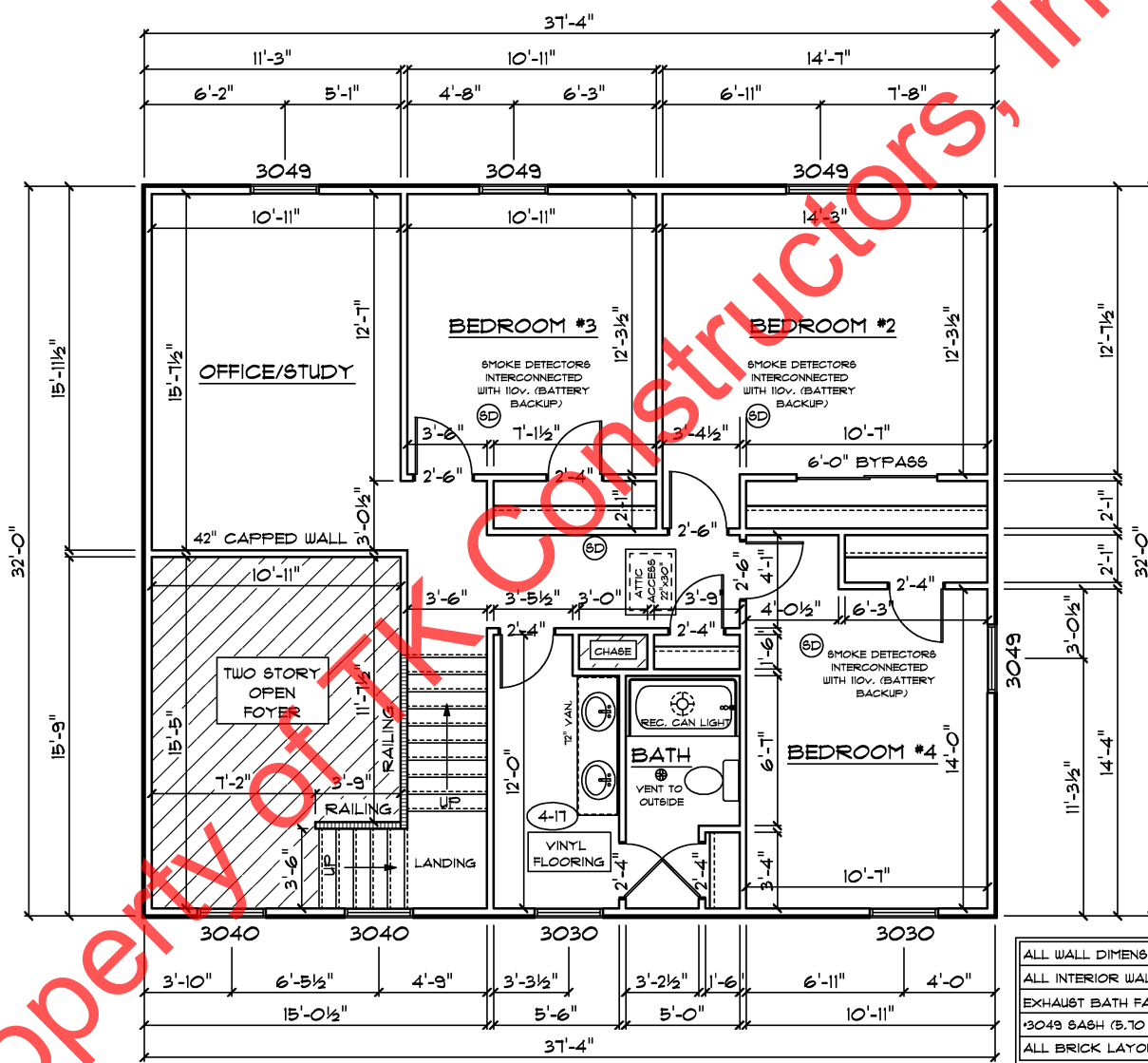


**SECOND FLOOR PLAN**

FIRST FLOOR SQ.FT.	1,636
SECOND FLOOR SQ.FT.	985
TOTAL LIVING SQ.FT.	2,621
GARAGE	544
TOTAL SQ.FT.	3,165
EXCLUDING PORCH	124

ANDERSEN WINDOW SCHEDULE - 200 SERIES -	
ANDERSEN MODEL NO.	R.O. SIZE
3030	36" x 36"
3040	36" x 48"
3049*	36" x 57"
3056*	36" x 66"
3060*	36" x 72"
3049 MULL*	73" x 57"
3056 MULL*	73" x 66"
3060 MULL*	73" x 72"
ANDERSEN SLIDING DOOR R.O. 72 3/4" x 82 7/8"	
3'-0" FRONT DOOR R.O. 38 3/8" x 82 1/2"	
3'-0" FRONT DOOR WITH (1) SIDELITE R.O. 51 7/8" x 82 1/2"	
3'-0" FRONT DOOR WITH (2) SIDELITES R.O. 65 3/8" x 82 1/2"	
R.O. FOR BI-FOLD DOORS USING DRYWALL JAMB FACING = 1 1/4" + DOOR SIZE x (81 1/2")	
R.O. FOR BYPASS DOORS USING DRYWALL JAMB FACING MAKE SAME AS BOTH DOORS ADDED TOGETHER	
ALL INTERIOR DOORS SIZE + 2" TO WIDTH x 82 1/2" HIGH	
R.O. POCKET DOOR (2x DOOR WIDTH + 1") x 85" HIGH	

\* - DENOTES OPENING MEETS  
EGRESS REQUIREMENTS



ALL WALL DIMENSIONS ARE FACE TO FACE OF STUDS  
ALL INTERIOR WALLS ARE 3 1/2" (UNLESS NOTED)  
EXHAUST BATH FANS ARE VENTED TO OUTSIDE AIR  
\*3049 SASH (5.10 SQ.FT. OF CLEAR OPENING)  
ALL BRICK LAYOUT MEASUREMENTS ARE 4"

