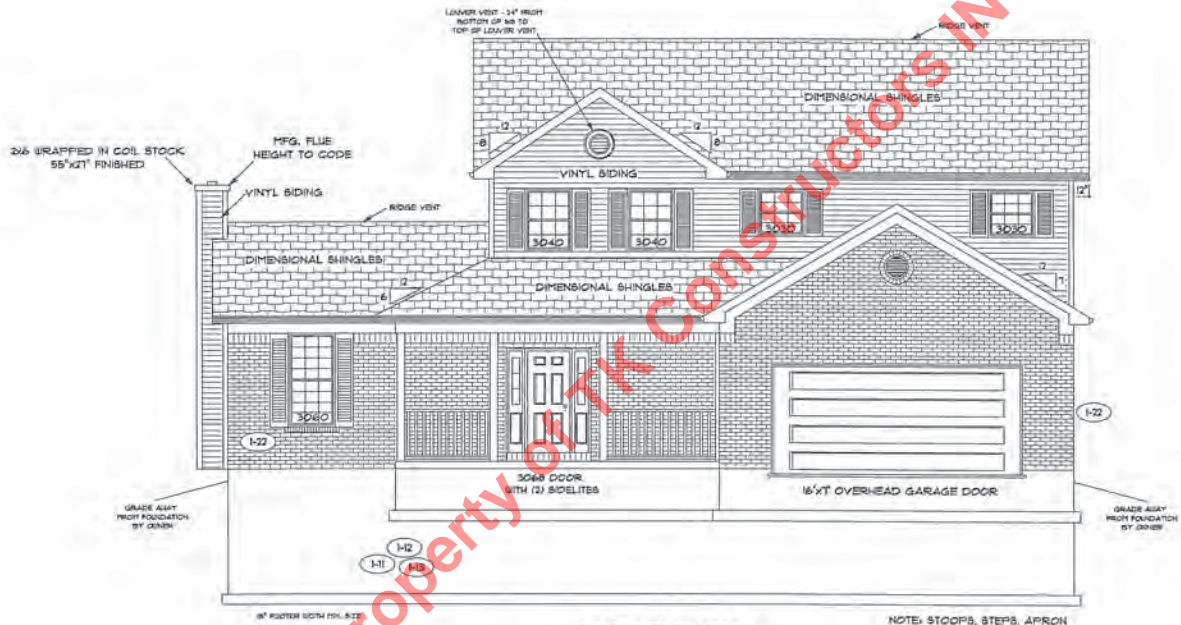


OPTIONS: SEE PAGE NO. 2



FRONT ELEVATION

NOTE: STOOPS, STEPS, APRON AND DRIVE BY OWNER

PAGE NO.:
1B

MODEL: AUGUSTA
VER: 11210
DRAWING BY: SES
SCALE: 1/8 IN.=1 FT.



DATE: April 04, 2011

JOB NO. 111-11-0079

TK CONSTRUCTORS

FIRST FLOOR PLAN

ANDERSEN WINDOWS

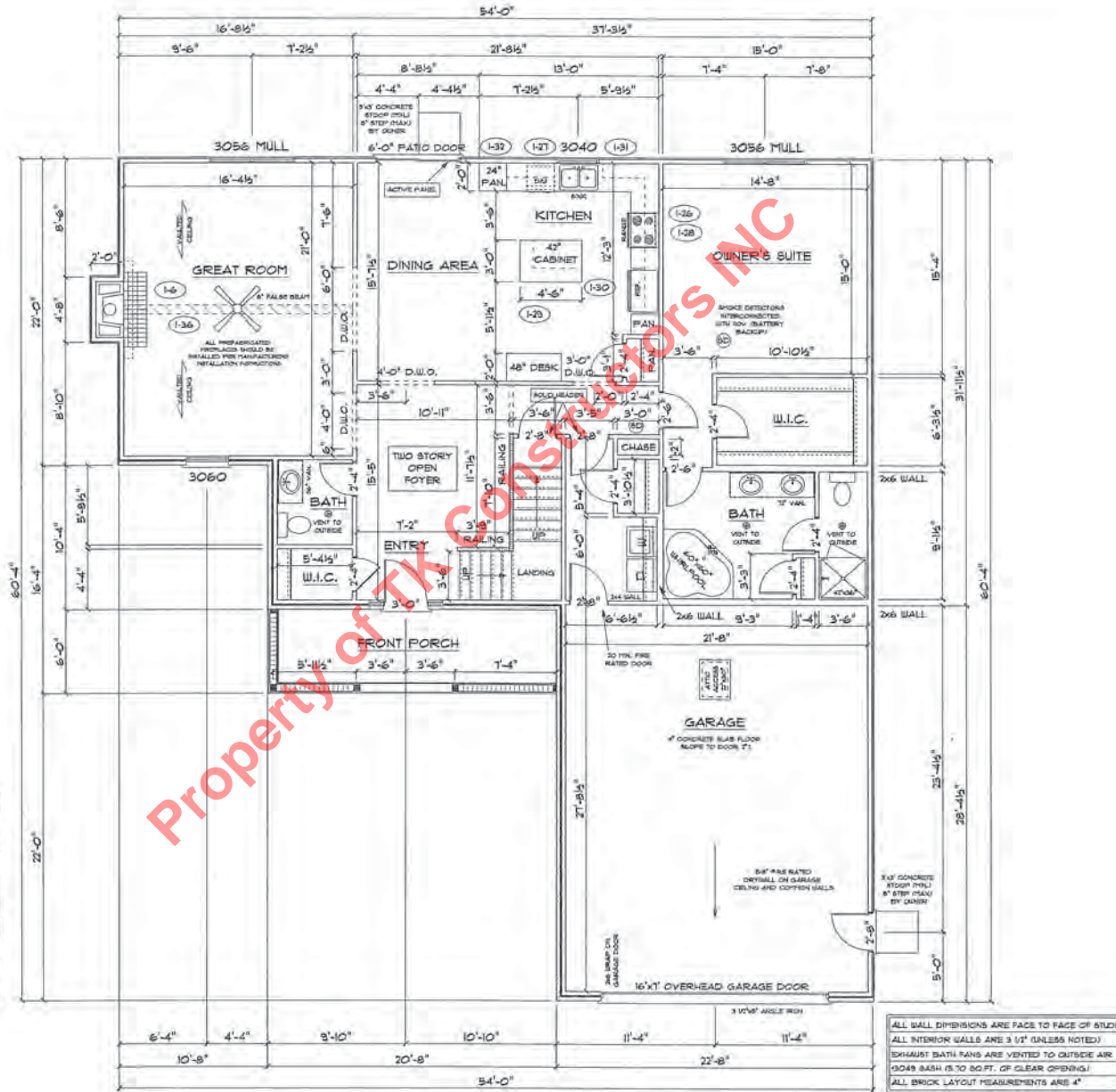
MODEL	R.O. SIZE
3030	36" x 36"
3040	36" x 48"
3048	36" x 51"
3056	36" x 66"
3060	36" x 72"
3048 MULL	13" x 51"
3056 MULL	13" x 66"
3060 MULL	13" x 72"

- ANDERSEN SLIDING DOOR
R.O. 12 3/4" x 82 7/8"
- 3/0 FRONT DOOR
R.O. 3'-2 1/2" x 82 1/2"
- 3/0 FRONT DOOR WITH (1) SIDE LIGHT
R.O. 4'-3 1/2" x 82"
- 3/0 FRONT DOOR WITH (2) SIDE LIGHTS
R.O. 5'-5" x 82"
- R.O. FOR BYFOLD DOORS USING DRY-WALL JAMB FACING IS 1 1/4" DOOR SIZE
- R.O. FOR BYPASS DOORS USING DRY-WALL JAMB FACING MAKE SAME AS BOTH DOORS ADDED TOGETHER
- ALL INTERIOR DOORS
SIZE = 2" TO WIDTH x 82 1/2" HIGH
- R.O. POCKET DOOR = (2x DOOR WIDTH + 1') x 85" HIGH

3'-0" FIRST FLOOR CEILING HEIGHT (1-2)

INCLUDES:

- 4 1/4" BASEBOARDS IN LIEU OF 3 1/4"
- 3060 WINDOWS IN LIEU OF 3056 WINDOWS
- 3056 WINDOWS IN LIEU OF 3048 WINDOWS
- DRYWALL WRAPPED OPENINGS 1" TALLER
- 42" KITCHEN CABINETS (1-30)
- 16'x7' GARAGE DOOR STANDARD

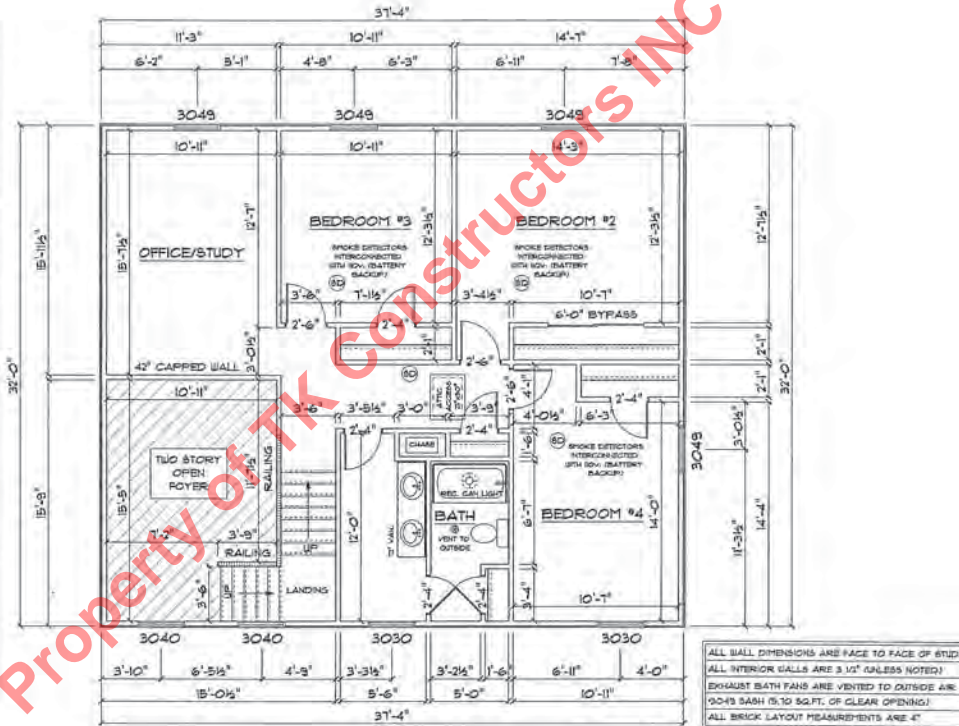


ALL WALL DIMENSIONS ARE FACE TO FACE OF STUDS
 ALL INTERIOR WALLS ARE 3/2" (UNLESS NOTED)
 EXHAUST BATH FANS ARE VENTED TO OUTSIDE AIR
 (3048 BASH IS 70 SOFT. OF CLEAR OPENING)
 ALL BRICK LAYOUT MEASUREMENTS ARE 4"

SECOND FLOOR PLAN

First Floor Sq.ft.	1,636
Second Floor Sq.ft.	985
Total Living Sq.ft.	2,621
Garage	635
Total Sq.ft.	3,256
Excluding Porch	124

ANDERSEN WINDOWS	
MODEL	R.O. SIZE
3030	36" x 36"
3040	36" x 48"
3049	36" x 51"
3056	36" x 66"
3060	36" x 72"
3049 MULL	13" x 51"
3056 MULL	13" x 66"
3060 MULL	13" x 72"
ANDERSEN SLIDING DOOR	
R.O. 12 3/4" x 82 1/8"	
3/0 FRONT DOOR	R.O. 3'-2 1/2" x 82 1/2"
3/0 FRONT DOOR WITH (1) SIDE LIGHT	R.O. 4'-3 1/2" x 82"
3/0 FRONT DOOR WITH (2) SIDE LIGHTS	R.O. 5'-5" x 82"
R.O. FOR BYFOLD DOORS USING DRY-WALL JAMB FACING IS 1 1/4" DOOR SIZE	
R.O. FOR BYPASS DOORS USING DRY-WALL JAMB FACING MAKE SAME AS BOTH DOORS ADDED TOGETHER	
ALL INTERIOR DOORS	
SIZE - 2" TO WIDTH x 82 1/2" HIGH	
R.O. POCKET DOOR - (2x) DOOR WIDTH + 1" x 85" HIGH	



ALL WALL DIMENSIONS ARE FACE TO FACE OF STUDS
 ALL INTERIOR WALLS ARE 3/2" UNLESS NOTED
 EXHAUST BATH FANS ARE VENTED TO OUTSIDE AIR
 00-49 SASH IS 10 SQ.FT. OF CLEAR OPENING
 ALL BRICK LAYOUT MEASUREMENTS ARE 4"

