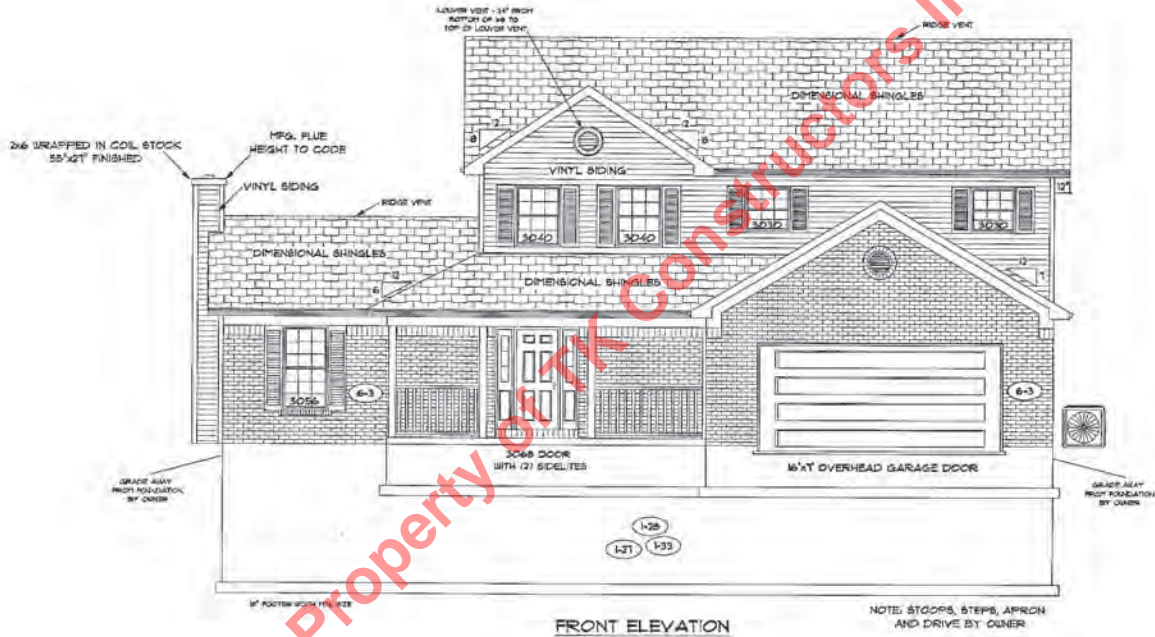


OPTIONS: SEE PAGE NO. 2



PAGE NO: 1B

MODEL: AUGUSTA
VER: 11210
DRAWING BY: SES
SCALE: 1/8 IN.=1 FT.

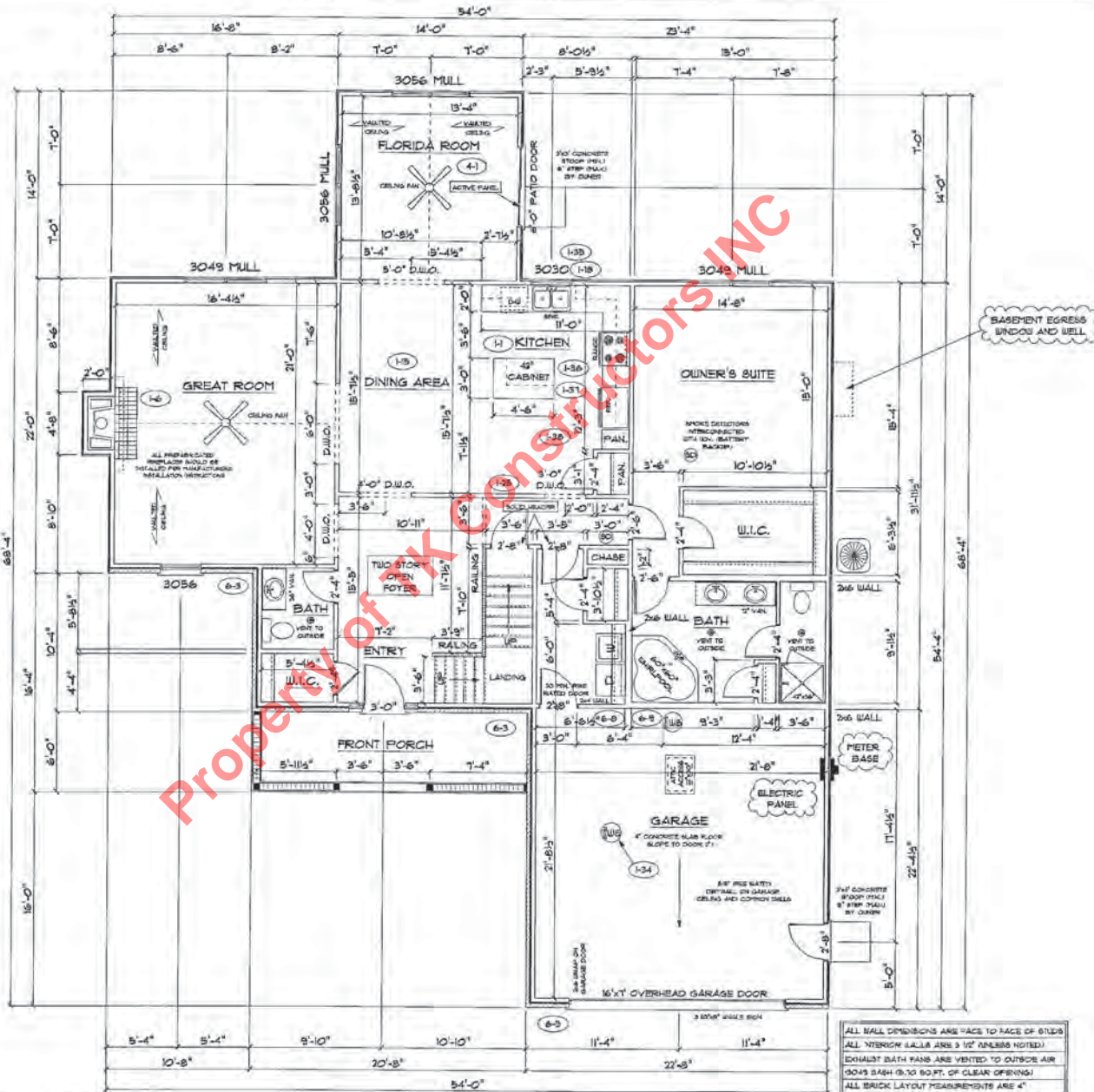


DATE: March 21, 2012
JOB NO: 111-11-0047

TK CONSTRUCTORS

FIRST FLOOR PLAN

ANDERSEN WINDOW SCHEDULE - 200 SERIES -	
ANDERSEN MODEL NO.	R.O. SIZE
3030	36" x 36"
3040	36" x 48"
3049*	36" x 51"
3056*	36" x 66"
3060*	36" x 72"
3049 MULL*	75" x 51"
3056 MULL*	73" x 66"
3060 MULL*	73" x 72"
ANDERSEN SLIDING DOOR R.O. 33 3/4" x 82 1/8"	
3'-0" FRONT DOOR R.O. 38 3/8" x 82 1/2"	
3'-0" FRONT DOOR WITH (1) SIDELITE R.O. 51 1/8" x 82 1/2"	
3'-0" FRONT DOOR WITH (2) SIDELITES R.O. 65 3/8" x 82 1/2"	
R.O. FOR BI-FOLD DOORS USING DRYWALL JAMB FACING + 1/4" + DOOR SIZE	
R.O. FOR BYPASS DOORS USING DRYWALL JAMB FACING MAKE SAME AS BOTH DOORS ADDED TOGETHER	
ALL INTERIOR DOORS SIZE + 2" TO WIDTH x 82 1/2" HIGH	
R.O. POCKET DOOR (2x DOOR WIDTH + 1") x 83" HIGH	
** DENOTES OPENING MEETS EGRESS REQUIREMENTS	



ALL WALL DIMENSIONS ARE FACE TO FACE OF STUDS
 ALL WINDOW SILL ARE 3 1/2" UNLESS NOTED
 EXHAUST BATH FANS ARE VENTED TO OUTSIDE AIR
 DOORS 24"X 80" TO 30"X 80" OF CLEAR OPENING
 ALL BRICK LAYOUT MEASUREMENTS ARE 4"

TK CONSTRUCTORS

DATE: March 21, 2012
 JOB NO. 111-11-0047



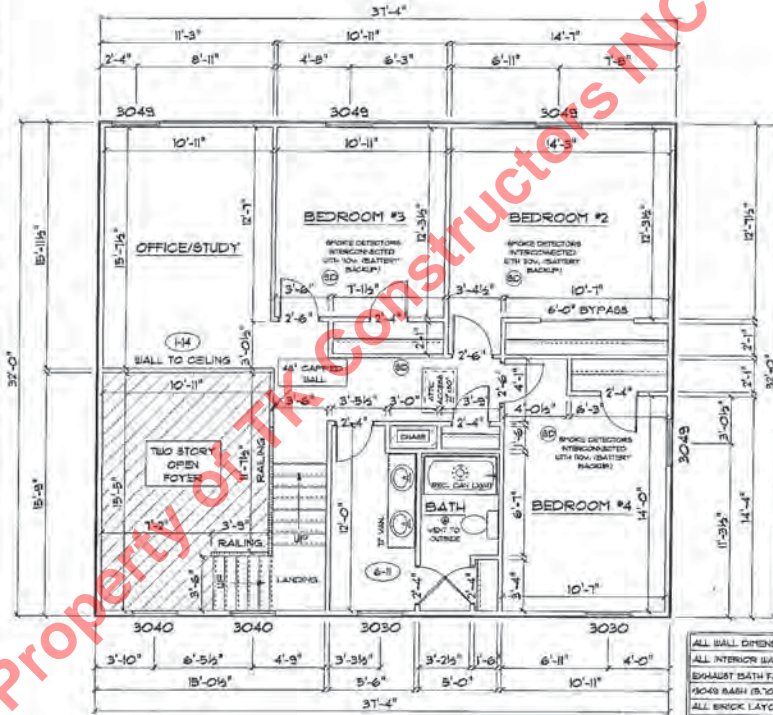
MODEL: AUGUSTA
 VER: 11210
 DRAWING BY: SES
 SCALE: 1/8" IN. = 1 FT.
 PAGE NO: **4B**

SECOND FLOOR PLAN

FIRST FLOOR SQ.FT.	1,832
SECOND FLOOR SQ.FT.	985
TOTAL LIVING SQ.FT.	2,817
GARAGE	499
TOTAL SQ.FT.	3,316
EXCLUDING PORCH	124

ANDERSEN WINDOW SCHEDULE - 200 SERIES -	
ANDERSEN MODEL NO.	R.O. SIZE
3030	36" x 36"
3040	36" x 48"
3049*	36" x 57"
3036*	36" x 66"
3060*	36" x 72"
3049 MULL*	73" x 57"
3056 MULL*	73" x 66"
3060 MULL*	73" x 72"
ANDERSEN SLIDING DOOR R.O. 72 3/4" x 82 1/8"	
3'-0" FRONT DOOR R.O. 38 3/8" x 82 1/2"	
3'-0" FRONT DOOR WITH (1) SIDELITE R.O. 51 1/8" x 82 1/2"	
3'-0" FRONT DOOR WITH (2) SIDELITES R.O. 65 3/8" x 82 1/2"	
R.O. FOR BI-FOLD DOORS USING DRYWALL JAMB FACING = 1/2" + DOOR SIZE	
R.O. FOR BYPASS DOORS USING DRYWALL JAMB FACING MAKE SAME AS BOTH DOORS ADDED TOGETHER	
ALL INTERIOR DOORS SIZE = 2" TO WIDTH x 82 1/2" HIGH	
R.O. POCKET DOOR (2x DOOR WIDTH + 1") x 85" HIGH	

* - DENOTES OPENING MEETS
EGBRMA REQUIREMENTS



ALL WALL DIMENSIONS ARE FACE TO FACE OF STUDS
ALL INTERIOR WALLS ARE 3/2" UNLESS NOTED!
EXHAUST BATH FANS ARE VENTED TO OUTSIDE AIR
(2049 BATH IS TO SOFT. OF CLEAR OPENING)
ALL BRICK LAYOUT REQUIREMENTS ARE 4"

